

HCLS1 Antibody (monoclonal) (M02)**Mouse monoclonal antibody raised against a partial recombinant HCLS1.****Catalog # AT2329a****Specification**

HCLS1 Antibody (monoclonal) (M02) - Product Information

Application	WB, IHC, E
Primary Accession	P14317
Other Accession	BC016758
Reactivity	Human
Host	mouse
Clonality	Monoclonal
Isotype	IgG1 Kappa
Calculated MW	54014

HCLS1 Antibody (monoclonal) (M02) - Additional Information**Gene ID** 3059**Other Names**

Hematopoietic lineage cell-specific protein, Hematopoietic cell-specific LYN substrate 1, LckBP1, p75, HCLS1, HS1

Target/Specificity

HCLS1 (AAH16758, 266 a.a. ~ 355 a.a) partial recombinant protein with GST tag. MW of the GST tag alone is 26 KDa.

Dilution

WB~~1:500~1000

Format

Clear, colorless solution in phosphate buffered saline, pH 7.2 .

Storage

Store at -20°C or lower. Aliquot to avoid repeated freezing and thawing.

Precautions

HCLS1 Antibody (monoclonal) (M02) is for research use only and not for use in diagnostic or therapeutic procedures.

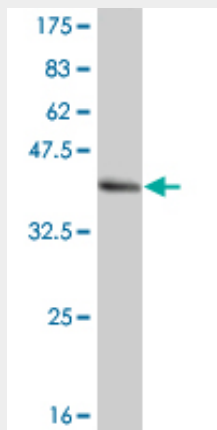
HCLS1 Antibody (monoclonal) (M02) - Protocols

Provided below are standard protocols that you may find useful for product applications.

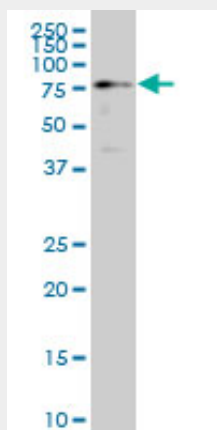
- [Western Blot](#)
- [Blocking Peptides](#)
- [Dot Blot](#)

- [Immunohistochemistry](#)
- [Immunofluorescence](#)
- [Immunoprecipitation](#)
- [Flow Cytometry](#)
- [Cell Culture](#)

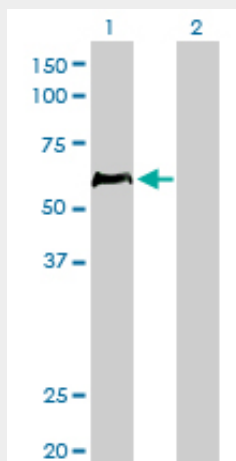
HCLS1 Antibody (monoclonal) (M02) - Images



Antibody Reactive Against Recombinant Protein. Western Blot detection against Immunogen (35.64 KDa) .

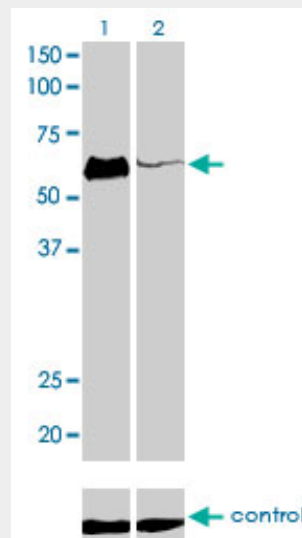


HCLS1 monoclonal antibody (M02), clone 1A8 Western Blot analysis of HCLS1 expression in K-562 (Cat # AT2329a)

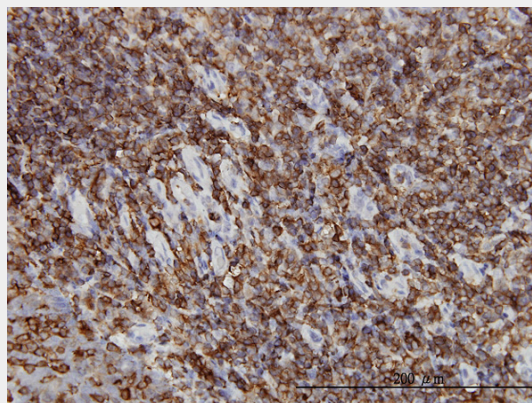


Western Blot analysis of HCLS1 expression in transfected 293T cell line by HCLS1 monoclonal antibody (M02), clone 1A8.

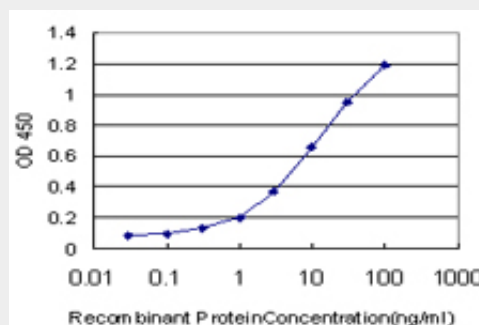
Lane 1: HCLS1 transfected lysate(54 KDa).
Lane 2: Non-transfected lysate.



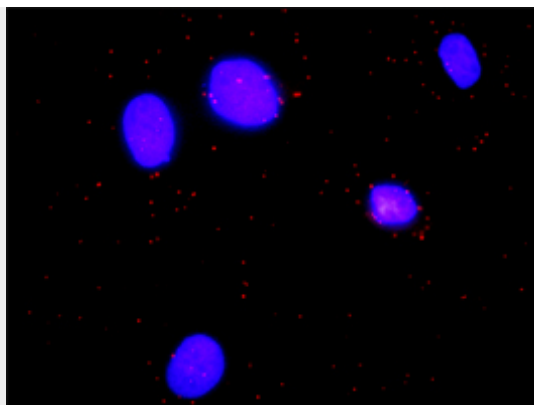
Western blot analysis of HCLS1 over-expressed 293 cell line, cotransfected with HCLS1 Validated Chimera RNAi (Cat # AT2329a)



Immunoperoxidase of monoclonal antibody to HCLS1 on formalin-fixed paraffin-embedded human tonsil. [antibody concentration 3 ug/ml]



Detection limit for recombinant GST tagged HCLS1 is approximately 0.1ng/ml as a capture antibody.



Proximity Ligation Analysis of protein-protein interactions between CASP3 and HCLS1. HeLa cells were stained with anti-CASP3 rabbit purified polyclonal 1:1200 and anti-HCLS1 mouse monoclonal antibody 1:50. Each red dot represents the detection of protein-protein interaction complex, and nuclei were counterstained with DAPI (blue).

HCLS1 Antibody (monoclonal) (M02) - References

HS1 complexes with cytoskeleton adapters in normal and malignant chronic lymphocytic leukemia B cells. Muzio M, et al. Leukemia, 2007 Sep. PMID 17508001. A protein-protein interaction network for human inherited ataxias and disorders of Purkinje cell degeneration. Lim J, et al. Cell, 2006 May 19. PMID 16713569. Towards a proteome-scale map of the human protein-protein interaction network. Rual JF, et al. Nature, 2005 Oct 20. PMID 16189514. The coiled-coil domain is required for HS1 to bind to F-actin and activate Arp2/3 complex. Hao JJ, et al. J Biol Chem, 2005 Nov 11. PMID 16157603. Quantitative phosphoproteome analysis using a dendrimer conjugation chemistry and tandem mass spectrometry. Tao WA, et al. Nat Methods, 2005 Aug. PMID 16094384.