

**ICA1 Antibody (monoclonal) (M01)****Mouse monoclonal antibody raised against a partial recombinant ICA1.****Catalog # AT2467a****Specification**

---

**ICA1 Antibody (monoclonal) (M01) - Product Information**

Application	WB, E
Primary Accession	<a href="#">Q05084</a>
Other Accession	<a href="#">NM_022307</a>
Reactivity	Human
Host	mouse
Clonality	Monoclonal
Isotype	IgG2a Kappa
Calculated MW	54645

**ICA1 Antibody (monoclonal) (M01) - Additional Information****Gene ID** 3382**Other Names**

Islet cell autoantigen 1, 69 kDa islet cell autoantigen, ICA69, Islet cell autoantigen p69, ICAp69, p69, ICA1

**Target/Specificity**

ICA1 (NP\_071682, 1 a.a. ~ 110 a.a) partial recombinant protein with GST tag. MW of the GST tag alone is 26 KDa.

**Dilution**

WB~~1:500~1000

**Format**

Clear, colorless solution in phosphate buffered saline, pH 7.2 .

**Storage**

Store at -20°C or lower. Aliquot to avoid repeated freezing and thawing.

**Precautions**

ICA1 Antibody (monoclonal) (M01) is for research use only and not for use in diagnostic or therapeutic procedures.

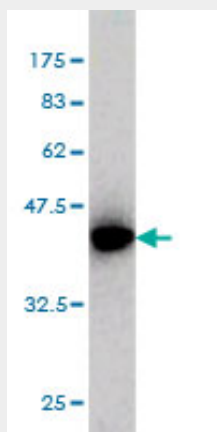
**ICA1 Antibody (monoclonal) (M01) - Protocols**

Provided below are standard protocols that you may find useful for product applications.

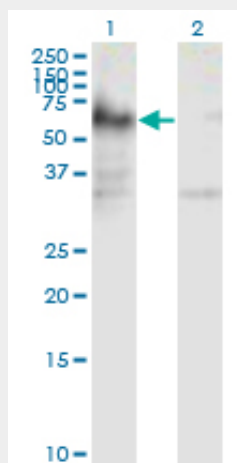
- [Western Blot](#)
- [Blocking Peptides](#)
- [Dot Blot](#)

- [Immunohistochemistry](#)
- [Immunofluorescence](#)
- [Immunoprecipitation](#)
- [Flow Cytometry](#)
- [Cell Culture](#)

## ICA1 Antibody (monoclonal) (M01) - Images



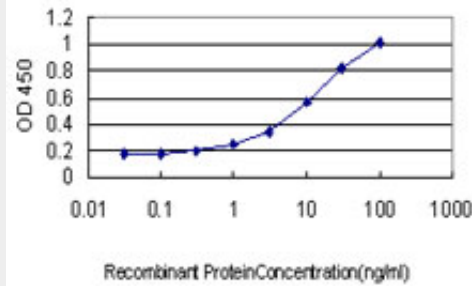
Antibody Reactive Against Recombinant Protein. Western Blot detection against Immunogen (37.84 kDa) .



Western Blot analysis of ICA1 expression in transfected 293T cell line by ICA1 monoclonal antibody (M01), clone 6G11.

Lane 1: ICA1 transfected lysate (Predicted MW: 54.6 kDa).

Lane 2: Non-transfected lysate.



Detection limit for recombinant GST tagged ICA1 is approximately 0.3ng/ml as a capture antibody.

### **ICA1 Antibody (monoclonal) (M01) - Background**

This gene encodes a protein with an arfaptin homology domain that is found both in the cytosol and as membrane-bound form on the Golgi complex and immature secretory granules. This protein is believed to be an autoantigen in insulin-dependent diabetes mellitus and primary Sjogren's syndrome. Alternatively spliced variants which encode different protein isoforms have been described; however, not all variants have been fully characterized.

### **ICA1 Antibody (monoclonal) (M01) - References**

Common variants in FOXP1 are associated with generalized vitiligo. Jin Y, et al. Nat Genet, 2010 Jul. PMID 20526340. Personalized smoking cessation: interactions between nicotine dose, dependence and quit-success genotype score. Rose JE, et al. Mol Med, 2010 Jul-Aug. PMID 20379614. ICA69 is a novel Rab2 effector regulating ER-Golgi trafficking in insulinoma cells. Buffa L, et al. Eur J Cell Biol, 2008 Apr. PMID 18187231. Large-scale mapping of human protein-protein interactions by mass spectrometry. Ewing RM, et al. Mol Syst Biol, 2007. PMID 17353931. The LIFEdb database in 2006. Mehrle A, et al. Nucleic Acids Res, 2006 Jan 1. PMID 16381901.