

ID2 Antibody (monoclonal) (M01)**Mouse monoclonal antibody raised against a full length recombinant ID2.****Catalog # AT2475a****Specification**

ID2 Antibody (monoclonal) (M01) - Product Information

Application	WB, E
Primary Accession	Q02363
Other Accession	BC030639
Reactivity	Human
Host	mouse
Clonality	Monoclonal
Isotype	IgG2a Kappa
Calculated MW	14917

ID2 Antibody (monoclonal) (M01) - Additional Information**Gene ID** 3398**Other Names**

DNA-binding protein inhibitor ID-2, Class B basic helix-loop-helix protein 26, bHLHb26, Inhibitor of DNA binding 2, Inhibitor of differentiation 2, ID2, BHLHB26

Target/Specificity

ID2 (AAH30639, 1 a.a. ~ 134 a.a) full-length recombinant protein with GST tag. MW of the GST tag alone is 26 KDa.

Dilution

WB~~1:500~1000

Format

Clear, colorless solution in phosphate buffered saline, pH 7.2 .

Storage

Store at -20°C or lower. Aliquot to avoid repeated freezing and thawing.

Precautions

ID2 Antibody (monoclonal) (M01) is for research use only and not for use in diagnostic or therapeutic procedures.

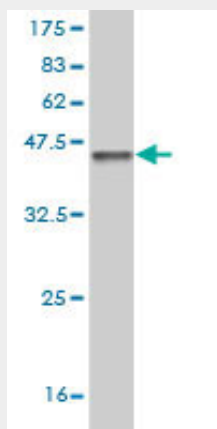
ID2 Antibody (monoclonal) (M01) - Protocols

Provided below are standard protocols that you may find useful for product applications.

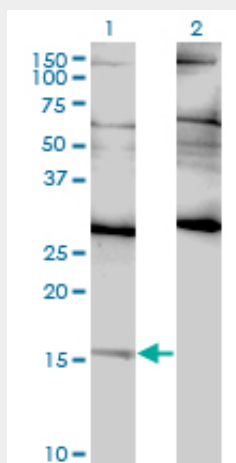
- [Western Blot](#)
- [Blocking Peptides](#)
- [Dot Blot](#)

- [Immunohistochemistry](#)
- [Immunofluorescence](#)
- [Immunoprecipitation](#)
- [Flow Cytometry](#)
- [Cell Culture](#)

ID2 Antibody (monoclonal) (M01) - Images



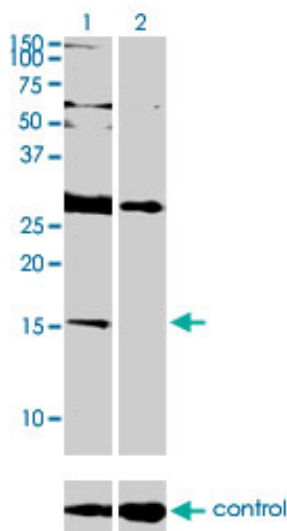
Antibody Reactive Against Recombinant Protein. Western Blot detection against Immunogen (40.48 kDa) .



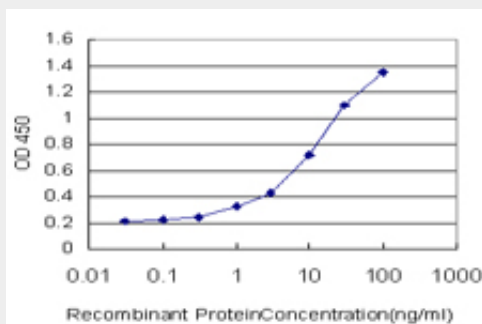
Western Blot analysis of ID2 expression in transfected 293T cell line by ID2 monoclonal antibody (M01), clone 3C3.

Lane 1: ID2 transfected lysate (14.9 kDa).

Lane 2: Non-transfected lysate.



Western blot analysis of ID2 over-expressed 293 cell line, cotransfected with ID2 Validated Chimera RNAi (Cat # AT2475a)



Detection limit for recombinant GST tagged ID2 is approximately 0.3ng/ml as a capture antibody.

ID2 Antibody (monoclonal) (M01) - Background

The protein encoded by this gene belongs to the inhibitor of DNA binding (ID) family, members of which are transcriptional regulators that contain a helix-loop-helix (HLH) domain but not a basic domain. Members of the ID family inhibit the functions of basic helix-loop-helix transcription factors in a dominant-negative manner by suppressing their heterodimerization partners through the HLH domains. This protein may play a role in negatively regulating cell differentiation. A pseudogene has been identified for this gene.

ID2 Antibody (monoclonal) (M01) - References

Evaluation of candidate stromal epithelial cross-talk genes identifies association between risk of serous ovarian cancer and TERT, a cancer susceptibility hot-spot. Johnatty SE, et al. PLoS Genet, 2010 Jul 8. PMID 20628624. Polycomb repressor complex 2 regulates HOXA9 and HOXA10, activating ID2 in NK/T-cell lines. Nagel S, et al. Mol Cancer, 2010 Jun 17. PMID 20565746. Synergy between IL-15 and Id2 promotes the expansion of human NK progenitor cells, which can be counteracted by the E protein HEB required to drive T cell development. Schotte R, et al. J Immunol, 2010 Jun 15. PMID 20483740. Id2 promotes tumor cell migration and invasion through transcriptional repression of semaphorin 3F. Coma S, et al. Cancer Res, 2010 May 1. PMID 20388805. Inhibitor of DNA binding/differentiation 2 induced by hypoxia promotes synovial fibroblast-dependent osteoclastogenesis. Kurowska-Stolarska M, et al. Arthritis Rheum, 2009 Dec. PMID 19950294.