

IL1RAPL1 Antibody (monoclonal) (M04)**Mouse monoclonal antibody raised against a partial recombinant IL1RAPL1.****Catalog # AT2512a****Specification**

IL1RAPL1 Antibody (monoclonal) (M04) - Product Information

Application	WB, E
Primary Accession	O9NZN1
Other Accession	NM_014271
Reactivity	Human
Host	mouse
Clonality	Monoclonal
Isotype	IgG2a Kappa
Calculated MW	79969

IL1RAPL1 Antibody (monoclonal) (M04) - Additional Information**Gene ID** 11141**Other Names**

Interleukin-1 receptor accessory protein-like 1, IL-1-RAPL-1, IL-1RAPL-1, IL1RAPL-1, Oligophrenin-4, Three immunoglobulin domain-containing IL-1 receptor-related 2, TIGIRR-2, X-linked interleukin-1 receptor accessory protein-like 1, IL1RAPL1, OPHN4

Target/Specificity

IL1RAPL1 (NP_055086.1, 151 a.a. ~ 250 a.a) partial recombinant protein with GST tag. MW of the GST tag alone is 26 KDa.

Dilution

WB~~1:500~1000

Format

Clear, colorless solution in phosphate buffered saline, pH 7.2 .

Storage

Store at -20°C or lower. Aliquot to avoid repeated freezing and thawing.

Precautions

IL1RAPL1 Antibody (monoclonal) (M04) is for research use only and not for use in diagnostic or therapeutic procedures.

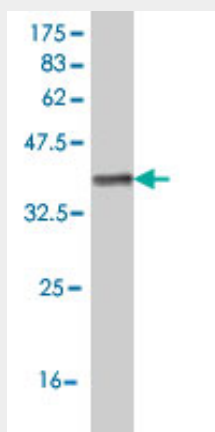
IL1RAPL1 Antibody (monoclonal) (M04) - Protocols

Provided below are standard protocols that you may find useful for product applications.

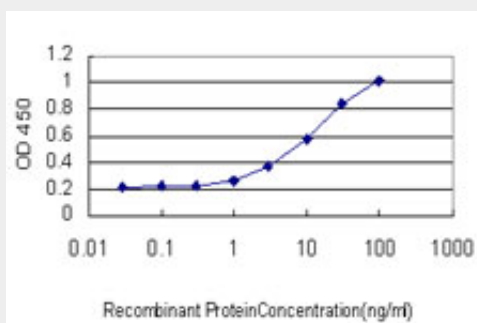
- [Western Blot](#)
- [Blocking Peptides](#)

- [Dot Blot](#)
- [Immunohistochemistry](#)
- [Immunofluorescence](#)
- [Immunoprecipitation](#)
- [Flow Cytometry](#)
- [Cell Culture](#)

IL1RAPL1 Antibody (monoclonal) (M04) - Images



Antibody Reactive Against Recombinant Protein. Western Blot detection against Immunogen (36.74 kDa) .



Detection limit for recombinant GST tagged IL1RAPL1 is approximately 0.3ng/ml as a capture antibody.

IL1RAPL1 Antibody (monoclonal) (M04) - Background

The protein encoded by this gene is a member of the interleukin 1 receptor family and is similar to the interleukin 1 accessory proteins. It is most closely related to interleukin 1 receptor accessory protein-like 2 (IL1RAPL2). This gene and IL1RAPL2 are located at a region on chromosome X that is associated with X-linked non-syndromic mental retardation. Deletions and mutations in this gene were found in patients with mental retardation. This gene is expressed at a high level in post-natal brain structures involved in the hippocampal memory system, which suggests a specialized role in the physiological processes underlying memory and learning abilities.

IL1RAPL1 Antibody (monoclonal) (M04) - References

1. Mutations in the calcium-related gene IL1RAPL1 are associated with autism. Piton A, Michaud JL, Peng H, Aradhya S, Gauthier J, Mottron L, Champagne N, Lafreniere RG, Hamdan FF; S2D team, Joob R, Fombonne E, Marineau C, Cossette P, Dube MP, Haghighi P, Drapeau P, Barker PA, Carbonetto S, Rouleau GA. Hum Mol Genet. 2008 Dec 15;17(24):3965-74. Epub 2008 Sep 18.