

IL27 Antibody (monoclonal) (M01)**Mouse monoclonal antibody raised against a partial recombinant IL27.****Catalog # AT2518a****Specification**

IL27 Antibody (monoclonal) (M01) - Product Information

| | |
|-------------------|---------------------------|
| Application | IP, WB |
| Primary Accession | Q8NEV9 |
| Other Accession | NM_145659 |
| Reactivity | Human |
| Host | mouse |
| Clonality | Monoclonal |
| Isotype | IgG1 Kappa |
| Calculated MW | 27493 |

IL27 Antibody (monoclonal) (M01) - Additional Information**Gene ID** 246778**Other Names**

Interleukin-27 subunit alpha, IL-27 subunit alpha, IL-27-A, IL27-A, Interleukin-30, p28, IL27, IL27A, IL30

Target/Specificity

IL27 (NP_663634, 177 a.a. ~ 243 a.a) partial recombinant protein with GST tag. MW of the GST tag alone is 26 KDa.

Dilution

WB~~1:500~1000

Format

Clear, colorless solution in phosphate buffered saline, pH 7.2 .

Storage

Store at -20°C or lower. Aliquot to avoid repeated freezing and thawing.

Precautions

IL27 Antibody (monoclonal) (M01) is for research use only and not for use in diagnostic or therapeutic procedures.

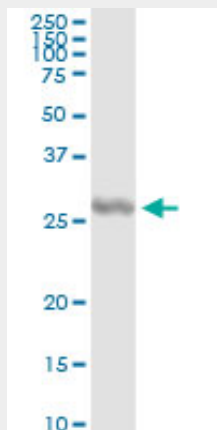
IL27 Antibody (monoclonal) (M01) - Protocols

Provided below are standard protocols that you may find useful for product applications.

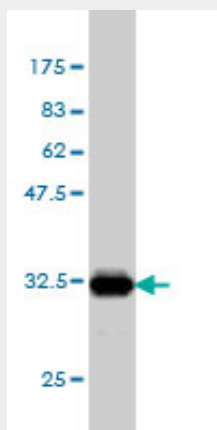
- [Western Blot](#)
- [Blocking Peptides](#)
- [Dot Blot](#)

- [Immunohistochemistry](#)
- [Immunofluorescence](#)
- [Immunoprecipitation](#)
- [Flow Cytometry](#)
- [Cell Culture](#)

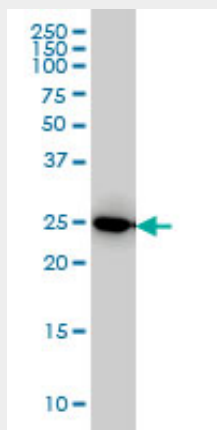
IL27 Antibody (monoclonal) (M01) - Images



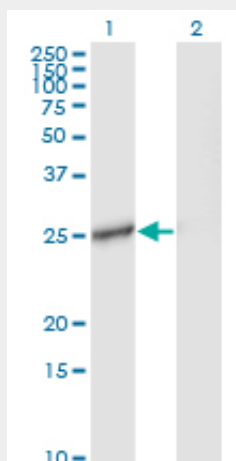
Immunoprecipitation of IL27 transfected lysate using anti-IL27 monoclonal antibody and Protein A Magnetic Bead ([U0007](#)), and immunoblotted with IL27 MaxPab rabbit polyclonal antibody.



Antibody Reactive Against Recombinant Protein. Western Blot detection against Immunogen (33.11 KDa) .



IL27 monoclonal antibody (M01), clone 3F12 Western Blot analysis of IL27 expression in HeLa (Cat # AT2518a)



Western Blot analysis of IL27 expression in transfected 293T cell line by IL27 monoclonal antibody (M01), clone 3F12.

Lane 1: IL27 transfected lysate(27.5 KDa).

Lane 2: Non-transfected lysate.

IL27 Antibody (monoclonal) (M01) - Background

The protein encoded by this gene is one of the subunits of a heterodimeric cytokine complex. This protein is related to interleukin 12A (IL12A). It interacts with Epstein-Barr virus induced gene 3 (EBI3), a protein similar to interleukin 12B (IL12B), and forms a complex that has been shown to drive rapid expansion of naive but not memory CD4(+) T cells. The complex is also found to synergize strongly with interleukin 12 to trigger interferon gamma (IFNG) production of naive CD4(+) T cells. The biological effects of this cytokine are mediated by the class I cytokine receptor (WSX1/TCRR).

IL27 Antibody (monoclonal) (M01) - References

Interleukin-9 polymorphism in infants with respiratory syncytial virus infection: an opposite effect in boys and girls. Schuurhof A, et al. *Pediatr Pulmonol*, 2010 Jun. PMID 20503287. A pivotal role for interleukin-27 in CD8+ T cell functions and generation of cytotoxic T lymphocytes. Morishima N, et al. *J Biomed Biotechnol*, 2010. PMID 20454646. Activation of IL-27 p28 gene transcription by interferon regulatory factor 8 in cooperation with interferon regulatory factor 1. Zhang J, et al. *J Biol Chem*, 2010 Jul 9. PMID 20435892. Cytokines involved in interferon-gamma production by human macrophages. Robinson CM, et al. *J Innate Immun*, 2009 Dec. PMID 20375623. Activation of human bronchial epithelial cells by inflammatory cytokines IL-27 and TNF-alpha: implications for immunopathophysiology of airway inflammation. Cao J, et al. *J Cell Physiol*, 2010 Jun. PMID 20301193.