

**JAM2 Antibody (monoclonal) (M01)****Mouse monoclonal antibody raised against a full length recombinant JAM2.****Catalog # AT2578a****Specification**

---

**JAM2 Antibody (monoclonal) (M01) - Product Information**

Application	WB, IHC, E
Primary Accession	<a href="#">P57087</a>
Other Accession	<a href="#">BC017779</a>
Reactivity	Human
Host	mouse
Clonality	Monoclonal
Isotype	IgG1 kappa
Calculated MW	33207

**JAM2 Antibody (monoclonal) (M01) - Additional Information****Gene ID** 58494**Other Names**

Junctional adhesion molecule B, JAM-B, Junctional adhesion molecule 2, JAM-2, Vascular endothelial junction-associated molecule, VE-JAM, CD322, JAM2, C21orf43, VEJAM

**Target/Specificity**

JAM2 (AAH17779, 29 a.a. ~ 298 a.a) full-length recombinant protein with GST tag. MW of the GST tag alone is 26 KDa.

**Dilution**

WB~~1:500~1000

**Format**

Clear, colorless solution in phosphate buffered saline, pH 7.2 .

**Storage**

Store at -20°C or lower. Aliquot to avoid repeated freezing and thawing.

**Precautions**

JAM2 Antibody (monoclonal) (M01) is for research use only and not for use in diagnostic or therapeutic procedures.

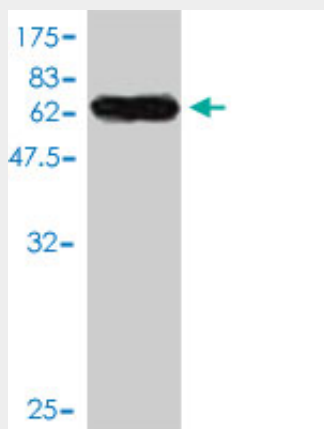
**JAM2 Antibody (monoclonal) (M01) - Protocols**

Provided below are standard protocols that you may find useful for product applications.

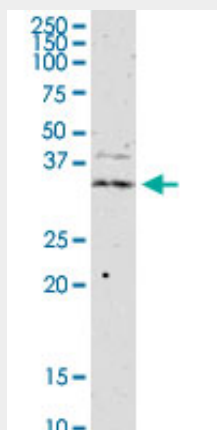
- [Western Blot](#)
- [Blocking Peptides](#)
- [Dot Blot](#)

- [Immunohistochemistry](#)
- [Immunofluorescence](#)
- [Immunoprecipitation](#)
- [Flow Cytometry](#)
- [Cell Culture](#)

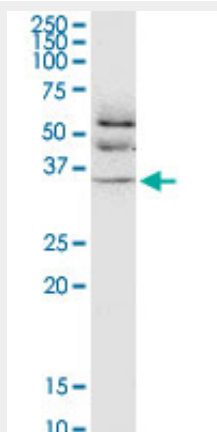
## JAM2 Antibody (monoclonal) (M01) - Images



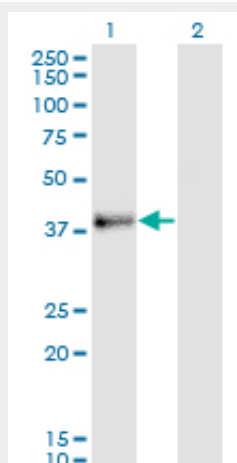
Antibody Reactive Against Recombinant Protein. Western Blot detection against Immunogen (55.44 kDa) .



JAM2 monoclonal antibody (M01), clone 1G4. Western Blot analysis of JAM2 expression in human ovarian cancer.



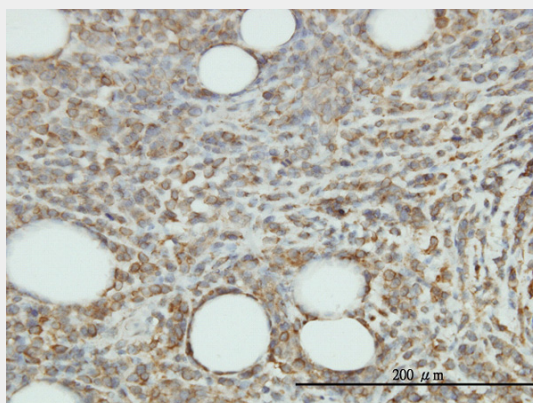
JAM2 monoclonal antibody (M01), clone 1G4. Western Blot analysis of JAM2 expression in HL-60.



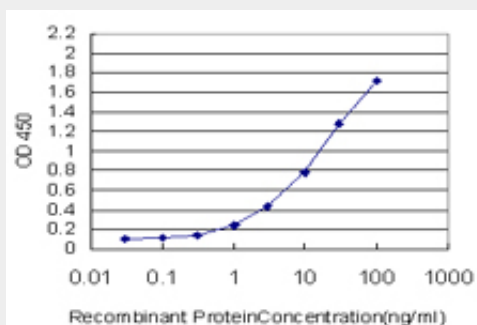
Western Blot analysis of JAM2 expression in transfected 293T cell line by JAM2 monoclonal antibody (M01), clone 1G4.

Lane 1: JAM2 transfected lysate (Predicted MW: 33.2 kDa).

Lane 2: Non-transfected lysate.



Immunoperoxidase of monoclonal antibody to JAM2 on formalin-fixed paraffin-embedded human malignant lymphoma, diffuse large B tissue. [antibody concentration 1 ug/ml]



Detection limit for recombinant GST tagged JAM2 is approximately 0.1ng/ml as a capture antibody.

### JAM2 Antibody (monoclonal) (M01) - Background

Tight junctions represent one mode of cell-to-cell adhesion in epithelial or endothelial cell sheets, forming continuous seals around cells and serving as a physical barrier to prevent solutes and

water from passing freely through the paracellular space. The protein encoded by this immunoglobulin superfamily gene member is localized in the tight junctions between high endothelial cells. It acts as an adhesive ligand for interacting with a variety of immune cell types and may play a role in lymphocyte homing to secondary lymphoid organs.

#### **JAM2 Antibody (monoclonal) (M01) - References**

A genome-wide study of common SNPs and CNVs in cognitive performance in the CANTAB. Need AC, et al. Hum Mol Genet, 2009 Dec 1. PMID 19734545. Expression of junctional adhesion molecules on the human lymphatic endothelium. Ueki T, et al. Microvasc Res, 2008 Mar. PMID 17822725. The role of junctional adhesion molecules in vascular inflammation. Weber C, et al. Nat Rev Immunol, 2007 Jun. PMID 17525755. A distinct PAR complex associates physically with VE-cadherin in vertebrate endothelial cells. Iden S, et al. EMBO Rep, 2006 Dec. PMID 17057644. The LIFEdb database in 2006. Mehrle A, et al. Nucleic Acids Res, 2006 Jan 1. PMID 16381901.