

**KLF12 Antibody (monoclonal) (M01)****Mouse monoclonal antibody raised against a partial recombinant KLF12.****Catalog # AT2630a****Specification**

---

**KLF12 Antibody (monoclonal) (M01) - Product Information**

Application	WB
Primary Accession	<a href="#">O9Y4X4</a>
Other Accession	<a href="#">NM_007249</a>
Reactivity	Human
Host	mouse
Clonality	Monoclonal
Isotype	IgG2a Kappa
Calculated MW	44240

**KLF12 Antibody (monoclonal) (M01) - Additional Information****Gene ID** 11278**Other Names**

Krueppel-like factor 12, Transcriptional repressor AP-2rep, KLF12, AP2REP

**Target/Specificity**

KLF12 (NP\_009180, 1 a.a. ~ 90 a.a) partial recombinant protein with GST tag. MW of the GST tag alone is 26 KDa.

**Dilution**

WB~~1:500~1000

**Format**

Clear, colorless solution in phosphate buffered saline, pH 7.2 .

**Storage**

Store at -20°C or lower. Aliquot to avoid repeated freezing and thawing.

**Precautions**

KLF12 Antibody (monoclonal) (M01) is for research use only and not for use in diagnostic or therapeutic procedures.

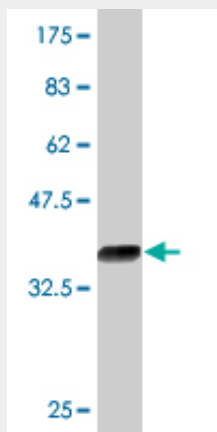
**KLF12 Antibody (monoclonal) (M01) - Protocols**

Provided below are standard protocols that you may find useful for product applications.

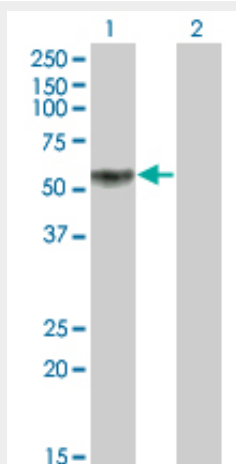
- [Western Blot](#)
- [Blocking Peptides](#)
- [Dot Blot](#)
- [Immunohistochemistry](#)

- [Immunofluorescence](#)
- [Immunoprecipitation](#)
- [Flow Cytometry](#)
- [Cell Culture](#)

### KLF12 Antibody (monoclonal) (M01) - Images



Antibody Reactive Against Recombinant Protein. Western Blot detection against Immunogen (35.64 KDa) .



Western Blot analysis of KLF12 expression in transfected 293T cell line by KLF12 monoclonal antibody (M01), clone 3E4.

Lane 1: KLF12 transfected lysate (44.2 KDa).

Lane 2: Non-transfected lysate.

### KLF12 Antibody (monoclonal) (M01) - Background

Activator protein-2 alpha (AP-2 alpha) is a developmentally-regulated transcription factor and important regulator of gene expression during vertebrate development and carcinogenesis. The protein encoded by this gene is a member of the Kruppel-like zinc finger protein family and can repress expression of the AP-2 alpha gene by binding to a specific site in the AP-2 alpha gene promoter. Repression by the encoded protein requires binding with a corepressor, CtBP1. Two transcript variants encoding different isoforms have been found for this gene.

### KLF12 Antibody (monoclonal) (M01) - References

Personalized smoking cessation: interactions between nicotine dose, dependence and quit-success genotype score. Rose JE, et al. Mol Med, 2010 Jul-Aug. PMID 20379614. A genome-wide association study identifies pancreatic cancer susceptibility loci on chromosomes 13q22.1, 1q32.1 and 5p15.33. Petersen GM, et al. Nat Genet, 2010 Mar. PMID 20101243. A functionally relevant IRF5 haplotype is associated with reduced risk to Wegener's granulomatosis. Wieczorek S, et al. J Mol Med, 2010 Apr. PMID 20049410. No evidence for association of the KLF12 gene with rheumatoid arthritis in a large UK cohort. Eyre S, et al. Ann Rheum Dis, 2010 Jul. PMID 19907058. Kr?ppel-like factor 12 plays a significant role in poorly differentiated gastric cancer progression. Nakamura Y, et al. Int J Cancer, 2009 Oct 15. PMID 19588488.