

**KLK8 Antibody (monoclonal) (M01)****Mouse monoclonal antibody raised against a partial recombinant KLK8.****Catalog # AT2642a****Specification**

---

**KLK8 Antibody (monoclonal) (M01) - Product Information**

Application	IF, WB, E
Primary Accession	<a href="#">O60259</a>
Other Accession	<a href="#">NM_007196</a>
Reactivity	Human
Host	mouse
Clonality	Monoclonal
Isotype	IgG2a Kappa
Calculated MW	28048

**KLK8 Antibody (monoclonal) (M01) - Additional Information****Gene ID** 11202**Other Names**

Kallikrein-8, hK8, Neuropsin, NP, Ovasin, Serine protease 19, Serine protease TADG-14, Tumor-associated differentially expressed gene 14 protein, KLK8, NRPN, PRSS19, TADG14

**Target/Specificity**

KLK8 (NP\_009127, 97 a.a. ~ 204 a.a) partial recombinant protein with GST tag. MW of the GST tag alone is 26 KDa.

**Dilution**

WB~~1:500~1000

**Format**

Clear, colorless solution in phosphate buffered saline, pH 7.2 .

**Storage**

Store at -20°C or lower. Aliquot to avoid repeated freezing and thawing.

**Precautions**

KLK8 Antibody (monoclonal) (M01) is for research use only and not for use in diagnostic or therapeutic procedures.

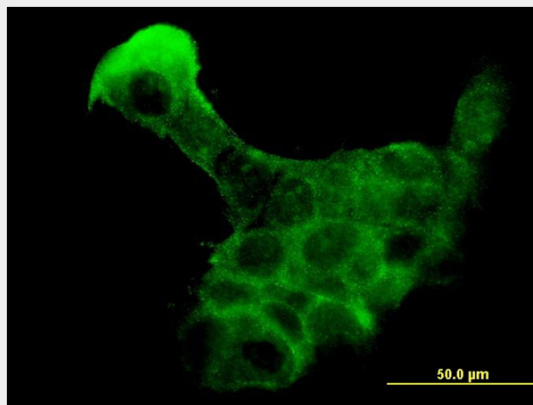
**KLK8 Antibody (monoclonal) (M01) - Protocols**

Provided below are standard protocols that you may find useful for product applications.

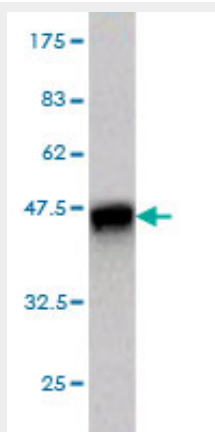
- [Western Blot](#)
- [Blocking Peptides](#)
- [Dot Blot](#)

- [Immunohistochemistry](#)
- [Immunofluorescence](#)
- [Immunoprecipitation](#)
- [Flow Cytometry](#)
- [Cell Culture](#)

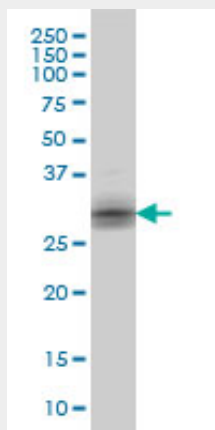
## KLK8 Antibody (monoclonal) (M01) - Images



Immunofluorescence of monoclonal antibody to KLK8 on A-431 cell. [antibody concentration 10 ug/ml]

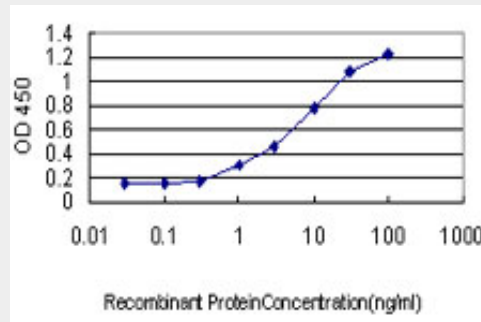


Antibody Reactive Against Recombinant Protein. Western Blot detection against Immunogen (37.62 KDa) .



KLK8 monoclonal antibody (M01), clone 2F11 Western Blot analysis of KLK8 expression in A-431 (

(Cat # AT2642a )



Detection limit for recombinant GST tagged KLK8 is approximately 0.3ng/ml as a capture antibody.

### **KLK8 Antibody (monoclonal) (M01) - Background**

Kallikreins are a subgroup of serine proteases having diverse physiological functions. Growing evidence suggests that many kallikreins are implicated in carcinogenesis and some have potential as novel cancer and other disease biomarkers. This gene is one of the fifteen kallikrein subfamily members located in a cluster on chromosome 19. Alternate splicing of this gene results in four transcript variants encoding four different isoforms. The isoforms exhibit distinct patterns of expression that suggest roles in brain plasticity and ovarian cancer.

### **KLK8 Antibody (monoclonal) (M01) - References**

Blood biomarker levels to aid discovery of cancer-related single-nucleotide polymorphisms: kallikreins and prostate cancer. Klein RJ, et al. Cancer Prev Res (Phila), 2010 May. PMID 20424135. Alternative splicing variant of kallikrein-related peptidase 8 as an independent predictor of unfavorable prognosis in lung cancer. Planque C, et al. Clin Chem, 2010 Jun. PMID 20360129. Association between kallikrein-related peptidases (KLKs) and macroscopic indicators of semen analysis: their relation to sperm motility. Emami N, et al. Biol Chem, 2009 Sep. PMID 19558318. SPINK9: a selective, skin-specific Kazal-type serine protease inhibitor. Brattsand M, et al. J Invest Dermatol, 2009 Jul. PMID 19194479. Functional characterization of the human-specific (type II) form of kallikrein 8, a gene involved in learning and memory. Lu ZX, et al. Cell Res, 2009 Feb. PMID 19125171.