

KLRB1 Antibody (monoclonal) (M01)**Mouse monoclonal antibody raised against a partial recombinant KLRB1.****Catalog # AT2643a****Specification**

KLRB1 Antibody (monoclonal) (M01) - Product Information

Application	WB, E
Primary Accession	O12918
Other Accession	NM_002258
Reactivity	Human
Host	mouse
Clonality	Monoclonal
Isotype	IgG1 Kappa
Calculated MW	25415

KLRB1 Antibody (monoclonal) (M01) - Additional Information**Gene ID** 3820**Other Names**

Killer cell lectin-like receptor subfamily B member 1, C-type lectin domain family 5 member B, HNKR-P1a, NKR-P1A, Natural killer cell surface protein P1A, CD161, KLRB1, CLEC5B, NKR-P1A

Target/Specificity

KLRB1 (NP_002249, 126 a.a. ~ 225 a.a) partial recombinant protein with GST tag. MW of the GST tag alone is 26 KDa.

Dilution

WB~~1:500~1000

Format

Clear, colorless solution in phosphate buffered saline, pH 7.2 .

Storage

Store at -20°C or lower. Aliquot to avoid repeated freezing and thawing.

Precautions

KLRB1 Antibody (monoclonal) (M01) is for research use only and not for use in diagnostic or therapeutic procedures.

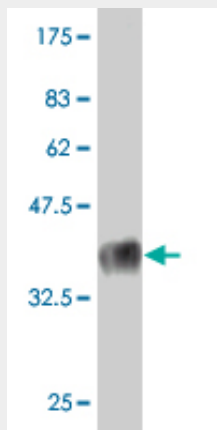
KLRB1 Antibody (monoclonal) (M01) - Protocols

Provided below are standard protocols that you may find useful for product applications.

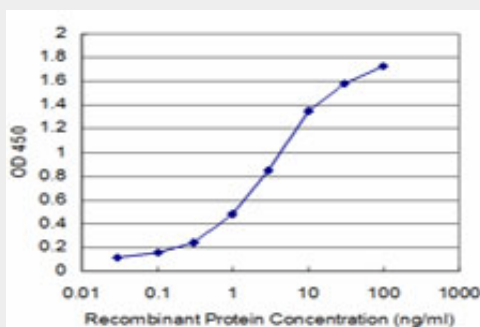
- [Western Blot](#)
- [Blocking Peptides](#)
- [Dot Blot](#)

- [Immunohistochemistry](#)
- [Immunofluorescence](#)
- [Immunoprecipitation](#)
- [Flow Cytometry](#)
- [Cell Culture](#)

KLRB1 Antibody (monoclonal) (M01) - Images



Antibody Reactive Against Recombinant Protein. Western Blot detection against Immunogen (36.74 kDa) .



Detection limit for recombinant GST tagged KLRB1 is approximately 0.1ng/ml as a capture antibody.

KLRB1 Antibody (monoclonal) (M01) - Background

Natural killer (NK) cells are lymphocytes that mediate cytotoxicity and secrete cytokines after immune stimulation. Several genes of the C-type lectin superfamily, including the rodent NKRP1 family of glycoproteins, are expressed by NK cells and may be involved in the regulation of NK cell function. The KLRB1 protein contains an extracellular domain with several motifs characteristic of C-type lectins, a transmembrane domain, and a cytoplasmic domain. The KLRB1 protein is classified as a type II membrane protein because it has an external C terminus.

KLRB1 Antibody (monoclonal) (M01) - References

CD161 receptor participates in both impairing NK cell cytotoxicity and the response to glycans and vimentin in patients with rheumatoid arthritis. Richter J, et al. Clin Immunol, 2010 Jul. PMID 20359956. New genetic associations detected in a host response study to hepatitis B vaccine. Davila S, et al. Genes Immun, 2010 Apr. PMID 20237496. Analysis of CD161 expression on human CD8+ T cells defines a distinct functional subset with tissue-homing properties. Billerbeck E, et al. Proc Natl Acad Sci U S A, 2010 Feb 16. PMID 20133607. Replication of CD58 and CLEC16A as genome-wide significant risk genes for multiple sclerosis. Hoppenbrouwers IA, et al. J Hum Genet, 2009 Nov. PMID

19834503. Distribution of several activating and inhibitory receptors on CD3-CD16+ NK cells and their correlation with NK cell function in healthy individuals. Konjević G, et al. J Membr Biol, 2009 Aug. PMID 19711124.