

**KPNA5 Antibody (monoclonal) (M01)**

Mouse monoclonal antibody raised against a full length recombinant KPNA5.

Catalog # AT2648a

**Specification**

---

**KPNA5 Antibody (monoclonal) (M01) - Product Information**

Application	WB, E
Primary Accession	<a href="#">O15131</a>
Other Accession	<a href="#">BC047409</a>
Reactivity	Human
Host	Mouse
Clonality	Monoclonal
Isotype	IgG1 kappa
Calculated MW	60666

**KPNA5 Antibody (monoclonal) (M01) - Additional Information**

**Gene ID** 3841

**Other Names**

Importin subunit alpha-6, Karyopherin subunit alpha-5, KPNA5

**Target/Specificity**

KPNA5 (AAH47409.1, 1 a.a. ~ 539 a.a) full-length recombinant protein with GST tag. MW of the GST tag alone is 26 KDa.

**Dilution**

WB~~1:500~1000

**Format**

Clear, colorless solution in phosphate buffered saline, pH 7.2 .

**Storage**

Store at -20°C or lower. Aliquot to avoid repeated freezing and thawing.

**Precautions**

KPNA5 Antibody (monoclonal) (M01) is for research use only and not for use in diagnostic or therapeutic procedures.

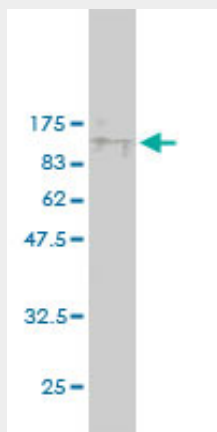
**KPNA5 Antibody (monoclonal) (M01) - Protocols**

Provided below are standard protocols that you may find useful for product applications.

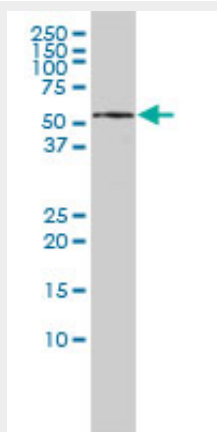
- [Western Blot](#)
- [Blocking Peptides](#)
- [Dot Blot](#)
- [Immunohistochemistry](#)

- [Immunofluorescence](#)
- [Immunoprecipitation](#)
- [Flow Cytometry](#)
- [Cell Culture](#)

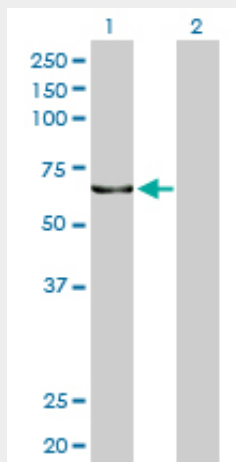
### KPNA5 Antibody (monoclonal) (M01) - Images



Antibody Reactive Against Recombinant Protein. Western Blot detection against Immunogen (85.03 KDa) .

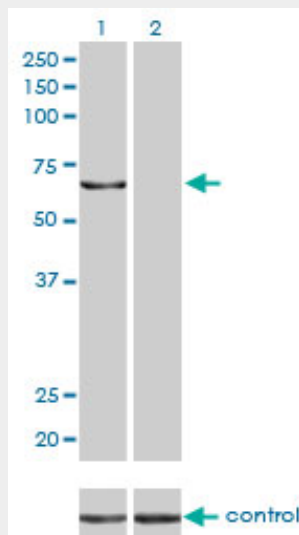


KPNA5 monoclonal antibody (M01), clone 1D2 Western Blot analysis of KPNA5 expression in HepG2 ( Cat # AT2648a )

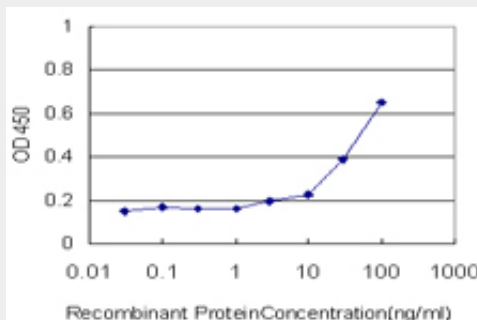


Western Blot analysis of KPNA5 expression in transfected 293T cell line by KPNA5 monoclonal antibody (M01), clone 1D2.

Lane 1: KPNA5 transfected lysate(60.7 KDa).  
Lane 2: Non-transfected lysate.



Western blot analysis of KPNA5 over-expressed 293 cell line, cotransfected with KPNA5 Validated Chimera RNAi (Cat # AT2648a)



Detection limit for recombinant GST tagged KPNA5 is approximately 3ng/ml as a capture antibody.

### KPNA5 Antibody (monoclonal) (M01) - Background

The transport of molecules between the nucleus and the cytoplasm in eukaryotic cells is mediated by the nuclear pore complex (NPC) which consists of 60-100 proteins and is probably 120 million daltons in molecular size. Small molecules (up to 70 kD) can pass through the nuclear pore by nonselective diffusion; larger molecules are transported by an active process. Most nuclear proteins contain short basic amino acid sequences known as nuclear localization signals (NLSs). KPNA5 protein belongs to the importin alpha protein family and is thought to be involved in NLS-dependent protein import into the nucleus.

### KPNA5 Antibody (monoclonal) (M01) - References

Probing the specificity of binding to the major nuclear localization sequence-binding site of importin-alpha using oriented peptide library screening. Yang SN, et al. J Biol Chem, 2010 Jun 25. PMID 20406804. Plasmodium circumsporozoite protein promotes the development of the liver stages of the parasite. Singh AP, et al. Cell, 2007 Nov 2. PMID 17981117. Systematic analysis of the

protein interaction network for the human transcription machinery reveals the identity of the 7SK capping enzyme. Jeronimo C, et al. Mol Cell, 2007 Jul 20. PMID 17643375. Breast cancer metastasis suppressor 1 (BRMS1) is stabilized by the Hsp90 chaperone. Hurst DR, et al. Biochem Biophys Res Commun, 2006 Oct 6. PMID 16919237. A protein-protein interaction network for human inherited ataxias and disorders of Purkinje cell degeneration. Lim J, et al. Cell, 2006 May 19. PMID 16713569.