

KRT5 Antibody (monoclonal) (M08)**Mouse monoclonal antibody raised against a full-length recombinant KRT5.****Catalog # AT2660a****Specification**

KRT5 Antibody (monoclonal) (M08) - Product Information

Application	IP, WB, E
Primary Accession	P13647
Other Accession	BC024292
Reactivity	Human
Host	mouse
Clonality	Monoclonal
Isotype	IgG2a Kappa
Calculated MW	62378

KRT5 Antibody (monoclonal) (M08) - Additional Information**Gene ID** 3852**Other Names**

Keratin, type II cytoskeletal 5, 58 kDa cytokeratin, Cytokeratin-5, CK-5, Keratin-5, K5, Type-II keratin Kb5, KRT5

Target/Specificity

KRT5 (AAH24292, 1 a.a. ~ 590 a.a) full-length recombinant protein with GST tag. MW of the GST tag alone is 26 KDa.

Dilution

WB~~1:500~1000

Format

Clear, colorless solution in phosphate buffered saline, pH 7.2 .

Storage

Store at -20°C or lower. Aliquot to avoid repeated freezing and thawing.

Precautions

KRT5 Antibody (monoclonal) (M08) is for research use only and not for use in diagnostic or therapeutic procedures.

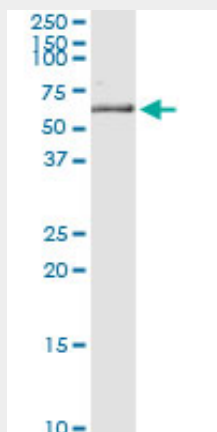
KRT5 Antibody (monoclonal) (M08) - Protocols

Provided below are standard protocols that you may find useful for product applications.

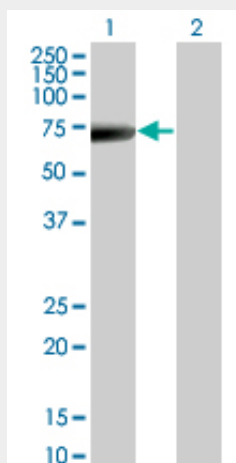
- [Western Blot](#)
- [Blocking Peptides](#)
- [Dot Blot](#)

- [Immunohistochemistry](#)
- [Immunofluorescence](#)
- [Immunoprecipitation](#)
- [Flow Cytometry](#)
- [Cell Culture](#)

KRT5 Antibody (monoclonal) (M08) - Images



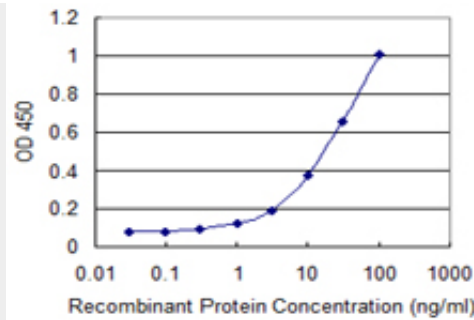
Immunoprecipitation of KRT5 transfected lysate using anti-KRT5 monoclonal antibody and Protein A Magnetic Bead ([U0007](#)), and immunoblotted with KRT5 MaxPab rabbit polyclonal antibody.



Western Blot analysis of KRT5 expression in transfected 293T cell line by KRT5 monoclonal antibody (M08), clone 1A12.

Lane 1: KRT5 transfected lysate(62.4 KDa).

Lane 2: Non-transfected lysate.



Detection limit for recombinant GST tagged KRT5 is 0.3 ng/ml as a capture antibody.

KRT5 Antibody (monoclonal) (M08) - Background

The protein encoded by this gene is a member of the keratin gene family. The type II cytokeratins consist of basic or neutral proteins which are arranged in pairs of heterotypic keratin chains coexpressed during differentiation of simple and stratified epithelial tissues. This type II cytokeratin is specifically expressed in the basal layer of the epidermis with family member KRT14. Mutations in these genes have been associated with a complex of diseases termed epidermolysis bullosa simplex. The type II cytokeratins are clustered in a region of chromosome 12q12-q13.

KRT5 Antibody (monoclonal) (M08) - References

The ubiquitin ligase CHIP/STUB1 targets mutant keratins for degradation. L'effek S, et al. Hum Mutat, 2010 Apr. PMID 20151404. Epidermolysis bullosa simplex due to KRT5 mutations: mutation-related differences in cellular fragility and the protective effects of trimethylamine N-oxide in cultured primary keratinocytes. Chamcheu JC, et al. Br J Dermatol, 2010 May. PMID 20128788. Novel and recurrent mutations in Keratin 5 and 14 in Korean patients with Epidermolysis bullosa simplex. Kang TW, et al. J Dermatol Sci, 2010 Feb. PMID 20060687. Keratin mutations in patients with epidermolysis bullosa simplex: correlations between phenotype severity and disturbance of intermediate filament molecular structure. Jerbkov B, et al. Br J Dermatol, 2010 May. PMID 20030639. ERK involvement in resistance to apoptosis in keratinocytes with mutant keratin. Russell D, et al. J Invest Dermatol, 2010 Mar. PMID 19847192.