

**LHX4 Antibody (monoclonal) (M06)**

Mouse monoclonal antibody raised against a partial recombinant LHX4.

Catalog # AT2707a

**Specification**

---

**LHX4 Antibody (monoclonal) (M06) - Product Information**

Application	WB
Primary Accession	<a href="#">O969G2</a>
Other Accession	<a href="#">NM_033343</a>
Reactivity	Human
Host	mouse
Clonality	Monoclonal
Isotype	IgG2a Kappa
Calculated MW	43124

**LHX4 Antibody (monoclonal) (M06) - Additional Information**

**Gene ID** 89884

**Other Names**

LIM/homeobox protein Lhx4, LIM homeobox protein 4, LHX4

**Target/Specificity**

LHX4 (NP\_203129, 208 a.a. ~ 306 a.a) partial recombinant protein with GST tag. MW of the GST tag alone is 26 KDa.

**Dilution**

WB~~1:500~1000

**Format**

Clear, colorless solution in phosphate buffered saline, pH 7.2 .

**Storage**

Store at -20°C or lower. Aliquot to avoid repeated freezing and thawing.

**Precautions**

LHX4 Antibody (monoclonal) (M06) is for research use only and not for use in diagnostic or therapeutic procedures.

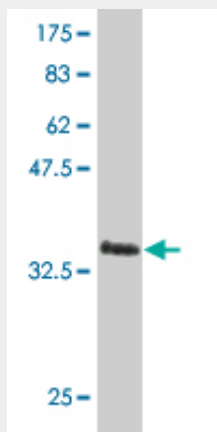
**LHX4 Antibody (monoclonal) (M06) - Protocols**

Provided below are standard protocols that you may find useful for product applications.

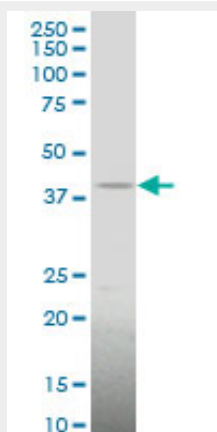
- [Western Blot](#)
- [Blocking Peptides](#)
- [Dot Blot](#)
- [Immunohistochemistry](#)

- [Immunofluorescence](#)
- [Immunoprecipitation](#)
- [Flow Cytometry](#)
- [Cell Culture](#)

#### LHX4 Antibody (monoclonal) (M06) - Images



Antibody Reactive Against Recombinant Protein. Western Blot detection against Immunogen (36.63 kDa) .



LHX4 monoclonal antibody (M06), clone 1C5 Western Blot analysis of LHX4 expression in LNCaP (Cat # AT2707a )

#### LHX4 Antibody (monoclonal) (M06) - Background

This gene encodes a member of a large protein family which contains the LIM domain, a unique cysteine-rich zinc-binding domain. The encoded protein may function as a transcriptional regulator and be involved in control of differentiation and development of the pituitary gland. Mutations in this gene are associated with syndromic short stature and pituitary and hindbrain defects. An alternative splice variant has been described but its biological nature has not been determined.

#### LHX4 Antibody (monoclonal) (M06) - References

Mutation and gene copy number analyses of six pituitary transcription factor genes in 71 patients with combined pituitary hormone deficiency: identification of a single patient with LHX4 deletion. Dateki S, et al. J Clin Endocrinol Metab, 2010 Aug. PMID 20534763. A novel dysfunctional LHX4 mutation with high phenotypical variability in patients with hypopituitarism. Castinetti F, et al. J Clin Endocrinol Metab, 2008 Jul. PMID 18445675. Three novel missense mutations within the LHX4 gene

are associated with variable pituitary hormone deficiencies. Pfaeffle RW, et al. J Clin Endocrinol Metab, 2008 Mar. PMID 18073311. Specificity protein 1 (Sp1) plays role in regulating LIM homeodomain transcription factor Lhx4 gene expression. Liu S, et al. Biochem Biophys Res Commun, 2008 Feb 1. PMID 18053794. The C terminus of the synovial sarcoma-associated SSX proteins interacts with the LIM homeobox protein LHX4. de Bruijn DR, et al. Oncogene, 2008 Jan 24. PMID 17667940.