

LIMK2 Antibody (monoclonal) (M01)

Mouse monoclonal antibody raised against a full length recombinant LIMK2.

Catalog # AT2717a

Specification

LIMK2 Antibody (monoclonal) (M01) - Product Information

Application	IF, WB, E
Primary Accession	P53671
Other Accession	BC013051
Reactivity	Human
Host	mouse
Clonality	Monoclonal
Isotype	IgG1 Kappa
Calculated MW	72232

LIMK2 Antibody (monoclonal) (M01) - Additional Information

Gene ID 3985

Other Names

LIM domain kinase 2, LIMK-2, LIMK2

Target/Specificity

LIMK2 (AAH13051.1, 1 a.a. ~ 686 a.a) full-length recombinant protein with GST tag. MW of the GST tag alone is 26 KDa.

Dilution

WB~~1:500~1000

Format

Clear, colorless solution in phosphate buffered saline, pH 7.2 .

Storage

Store at -20°C or lower. Aliquot to avoid repeated freezing and thawing.

Precautions

LIMK2 Antibody (monoclonal) (M01) is for research use only and not for use in diagnostic or therapeutic procedures.

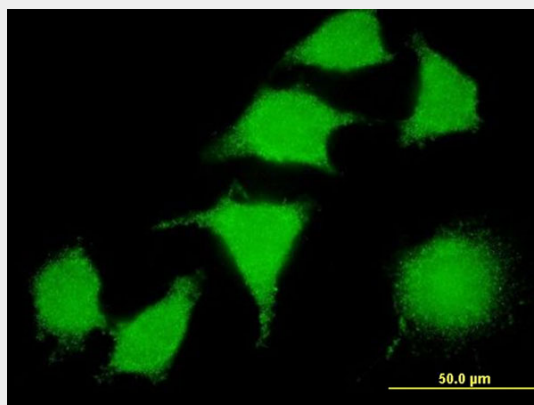
LIMK2 Antibody (monoclonal) (M01) - Protocols

Provided below are standard protocols that you may find useful for product applications.

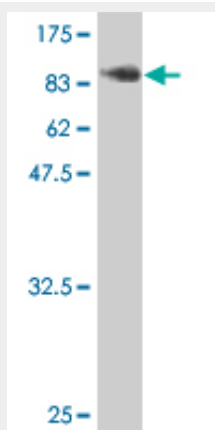
- [Western Blot](#)
- [Blocking Peptides](#)
- [Dot Blot](#)
- [Immunohistochemistry](#)

- [Immunofluorescence](#)
- [Immunoprecipitation](#)
- [Flow Cytometry](#)
- [Cell Culture](#)

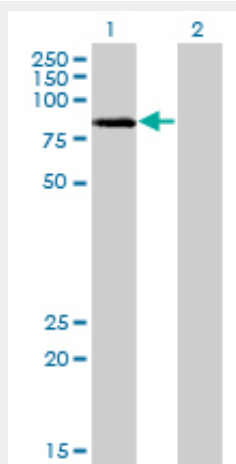
LIMK2 Antibody (monoclonal) (M01) - Images



Immunofluorescence of monoclonal antibody to LIMK2 on HeLa cell . [antibody concentration 10 ug/ml]



Antibody Reactive Against Recombinant Protein. Western Blot detection against Immunogen (101.0899 KDa) .

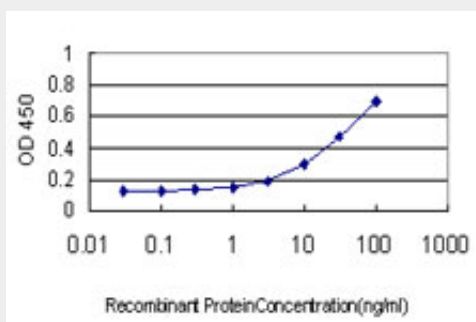


Western Blot analysis of LIMK2 expression in transfected 293T cell line by LIMK2 monoclonal

antibody (M01), clone 2H2-E11.

Lane 1: LIMK2 transfected lysate(72.232 KDa).

Lane 2: Non-transfected lysate.



Detection limit for recombinant GST tagged LIMK2 is approximately 0.3ng/ml as a capture antibody.

LIMK2 Antibody (monoclonal) (M01) - Background

There are approximately 40 known eukaryotic LIM proteins, so named for the LIM domains they contain. LIM domains are highly conserved cysteine-rich structures containing 2 zinc fingers. Although zinc fingers usually function by binding to DNA or RNA, the LIM motif probably mediates protein-protein interactions. LIM kinase-1 and LIM kinase-2 belong to a small subfamily with a unique combination of 2 N-terminal LIM motifs and a C-terminal protein kinase domain. The protein encoded by this gene is phosphorylated and activated by ROCK, a downstream effector of Rho, and the encoded protein, in turn, phosphorylates cofilin, inhibiting its actin-depolymerizing activity. It is thought that this pathway contributes to Rho-induced reorganization of the actin cytoskeleton. At least three transcript variants encoding different isoforms have been found for this gene.

LIMK2 Antibody (monoclonal) (M01) - References

Personalized smoking cessation: interactions between nicotine dose, dependence and quit-success genotype score. Rose JE, et al. Mol Med, 2010 Jul-Aug. PMID 20379614. LIMK1 and LIMK2 are important for metastatic behavior and tumor cell-induced angiogenesis of pancreatic cancer cells. Vlecken DH, et al. Zebrafish, 2009 Dec. PMID 20047470. Identification of potentially damaging amino acid substitutions leading to human male infertility. Kuzmin A, et al. Biol Reprod, 2009 Aug. PMID 19369647. ROCK1 and LIMK2 interact in spread but not blebbing cancer cells. Shea KF, et al. PLoS One, 2008. PMID 18852895. Toward a confocal subcellular atlas of the human proteome. Barbe L, et al. Mol Cell Proteomics, 2008 Mar. PMID 18029348.