

**LIPG Antibody (monoclonal) (M02)****Mouse monoclonal antibody raised against a full length recombinant LIPG.****Catalog # AT2720a****Specification**

---

**LIPG Antibody (monoclonal) (M02) - Product Information**

Application	WB, E
Primary Accession	<a href="#">O9Y5X9</a>
Other Accession	<a href="#">BC060825</a>
Reactivity	Human
Host	mouse
Clonality	Monoclonal
Isotype	IgG2a Kappa
Calculated MW	56795

**LIPG Antibody (monoclonal) (M02) - Additional Information****Gene ID** 9388**Other Names**

Endothelial lipase, Endothelial cell-derived lipase, EDL, EL, LIPG

**Target/Specificity**

LIPG (AAH60825.1, 21 a.a. ~ 500 a.a) full-length recombinant protein with GST tag. MW of the GST tag alone is 26 KDa.

**Dilution**

WB~~1:500~1000

**Format**

Clear, colorless solution in phosphate buffered saline, pH 7.2 .

**Storage**

Store at -20°C or lower. Aliquot to avoid repeated freezing and thawing.

**Precautions**

LIPG Antibody (monoclonal) (M02) is for research use only and not for use in diagnostic or therapeutic procedures.

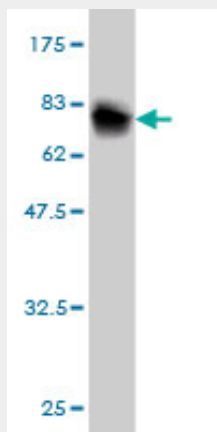
**LIPG Antibody (monoclonal) (M02) - Protocols**

Provided below are standard protocols that you may find useful for product applications.

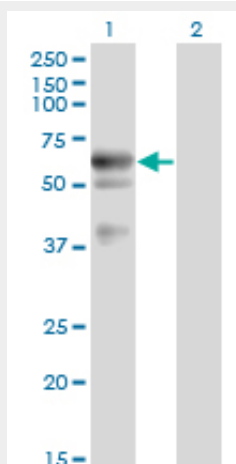
- [Western Blot](#)
- [Blocking Peptides](#)
- [Dot Blot](#)
- [Immunohistochemistry](#)

- [Immunofluorescence](#)
- [Immunoprecipitation](#)
- [Flow Cytometry](#)
- [Cell Culture](#)

## LIPG Antibody (monoclonal) (M02) - Images



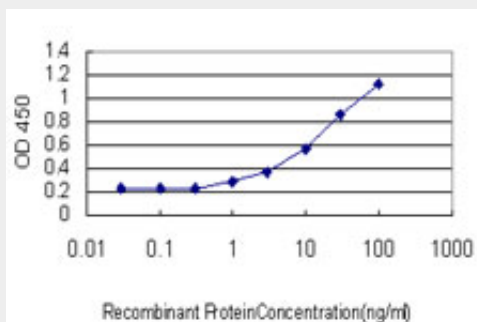
Antibody Reactive Against Recombinant Protein. Western Blot detection against Immunogen (78.54 KDa) .



Western Blot analysis of LIPG expression in transfected 293T cell line by LIPG monoclonal antibody (M02), clone 1E11.

Lane 1: LIPG transfected lysate (56.8 KDa).

Lane 2: Non-transfected lysate.



Detection limit for recombinant GST tagged LIPG is approximately 1ng/ml as a capture antibody.

#### **LIPG Antibody (monoclonal) (M02) - Background**

The protein encoded by this gene has substantial phospholipase activity and may be involved in lipoprotein metabolism and vascular biology. This protein is designated a member of the TG lipase family by its sequence and characteristic lid region which provides substrate specificity for enzymes of the TG lipase family.

#### **LIPG Antibody (monoclonal) (M02) - References**

Pharmacogenetic analysis of lipid responses to rosuvastatin in Chinese patients. Hu M, et al. Pharmacogenet Genomics, 2010 Oct. PMID 20679960. Variation at the NFATC2 Locus Increases the Risk of Thiazolidinedione-Induced Edema in the Diabetes REduction Assessment with ramipril and rosiglitazone Medication (DREAM) Study. Bailey SD, et al. Diabetes Care, 2010 Jul 13. PMID 20628086. Role of endothelial lipase in atherosclerosis. Huang J, et al. Transl Res, 2010 Jul. PMID 20621031. Physiogenomic analysis of statin-treated patients: domain-specific counter effects within the ACACB gene on low-density lipoprotein cholesterol? Ruafo G, et al. Pharmacogenomics, 2010 Jul. PMID 20602615. Evaluating the discriminative power of multi-trait genetic risk scores for type 2 diabetes in a northern Swedish population. Fontaine-Bisson B, et al. Diabetologia, 2010 Oct. PMID 20571754.