

**LSM3 Antibody (monoclonal) (M01)**

Mouse monoclonal antibody raised against a full length recombinant LSM3.

Catalog # AT2743a

**Specification**

---

**LSM3 Antibody (monoclonal) (M01) - Product Information**

Application	IF, WB, E
Primary Accession	<a href="#">P62310</a>
Other Accession	<a href="#">BC007055</a>
Reactivity	Human
Host	mouse
Clonality	Monoclonal
Isotype	IgG1 kappa
Calculated MW	11845

**LSM3 Antibody (monoclonal) (M01) - Additional Information**

**Gene ID** 27258

**Other Names**

U6 snRNA-associated Sm-like protein LSm3, LSM3

**Target/Specificity**

LSM3 (AAH07055, 1 a.a. ~ 102 a.a) full-length recombinant protein with GST tag. MW of the GST tag alone is 26 KDa.

**Dilution**

WB~~1:500~1000

**Format**

Clear, colorless solution in phosphate buffered saline, pH 7.2 .

**Storage**

Store at -20°C or lower. Aliquot to avoid repeated freezing and thawing.

**Precautions**

LSM3 Antibody (monoclonal) (M01) is for research use only and not for use in diagnostic or therapeutic procedures.

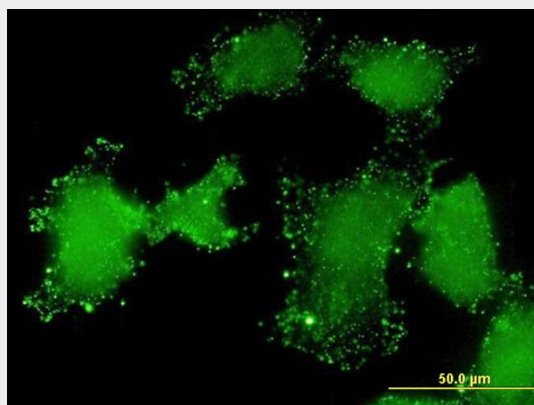
**LSM3 Antibody (monoclonal) (M01) - Protocols**

Provided below are standard protocols that you may find useful for product applications.

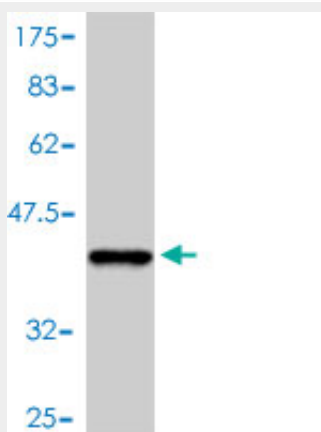
- [Western Blot](#)
- [Blocking Peptides](#)
- [Dot Blot](#)
- [Immunohistochemistry](#)

- [Immunofluorescence](#)
- [Immunoprecipitation](#)
- [Flow Cytometry](#)
- [Cell Culture](#)

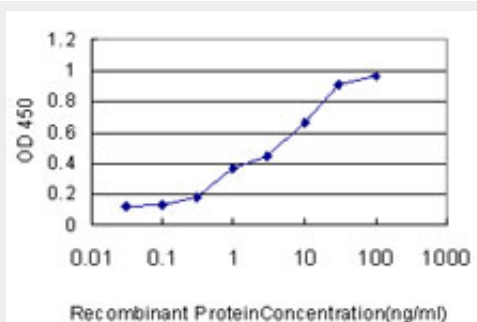
### LSM3 Antibody (monoclonal) (M01) - Images



Immunofluorescence of monoclonal antibody to LSM3 on HeLa cell . [antibody concentration 10 ug/ml]



Antibody Reactive Against Recombinant Protein. Western Blot detection against Immunogen (36.96 KDa) .



Detection limit for recombinant GST tagged LSM3 is approximately 1ng/ml as a capture antibody.

### LSM3 Antibody (monoclonal) (M01) - Background

Sm-like proteins were identified in a variety of organisms based on sequence homology with the Sm protein family (see SNRPD2; MIM 601061). Sm-like proteins contain the Sm sequence motif,

which consists of 2 regions separated by a linker of variable length that folds as a loop. The Sm-like proteins are thought to form a stable heteromer present in tri-snRNP particles, which are important for pre-mRNA splicing.

### **LSM3 Antibody (monoclonal) (M01) - References**

Systematic analysis of the protein interaction network for the human transcription machinery reveals the identity of the 7SK capping enzyme. Jeronimo C, et al. Mol Cell, 2007 Jul 20. PMID 17643375. Diversification of transcriptional modulation: large-scale identification and characterization of putative alternative promoters of human genes. Kimura K, et al. Genome Res, 2006 Jan. PMID 16344560. Towards a proteome-scale map of the human protein-protein interaction network. Rual JF, et al. Nature, 2005 Oct 20. PMID 16189514. A human protein-protein interaction network: a resource for annotating the proteome. Stelzl U, et al. Cell, 2005 Sep 23. PMID 16169070. The status, quality, and expansion of the NIH full-length cDNA project: the Mammalian Gene Collection (MGC). Gerhard DS, et al. Genome Res, 2004 Oct. PMID 15489334.