

MAK Antibody (monoclonal) (M02)**Mouse monoclonal antibody raised against a partial recombinant MAK.****Catalog # AT2768a****Specification**

MAK Antibody (monoclonal) (M02) - Product Information

Application	IF, WB, E
Primary Accession	P20794
Other Accession	BC039825
Reactivity	Human
Host	mouse
Clonality	Monoclonal
Isotype	IgG2a Kappa
Calculated MW	70581

MAK Antibody (monoclonal) (M02) - Additional Information**Gene ID** 4117**Other Names**

Serine/threonine-protein kinase MAK, Male germ cell-associated kinase, MAK

Target/Specificity

MAK (AAH39825, 358 a.a. ~ 457 a.a) partial recombinant protein with GST tag. MW of the GST tag alone is 26 KDa.

Dilution

WB~~1:500~1000

Format

Clear, colorless solution in phosphate buffered saline, pH 7.2 .

Storage

Store at -20°C or lower. Aliquot to avoid repeated freezing and thawing.

Precautions

MAK Antibody (monoclonal) (M02) is for research use only and not for use in diagnostic or therapeutic procedures.

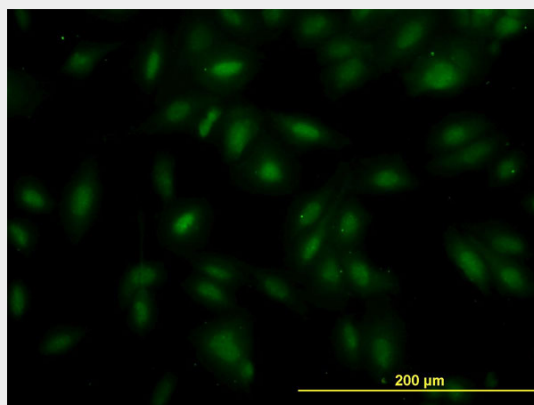
MAK Antibody (monoclonal) (M02) - Protocols

Provided below are standard protocols that you may find useful for product applications.

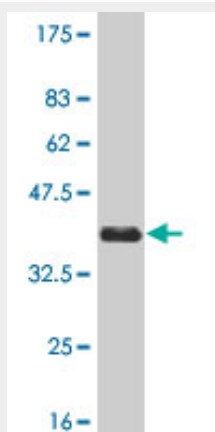
- [Western Blot](#)
- [Blocking Peptides](#)
- [Dot Blot](#)
- [Immunohistochemistry](#)

- [Immunofluorescence](#)
- [Immunoprecipitation](#)
- [Flow Cytometry](#)
- [Cell Culture](#)

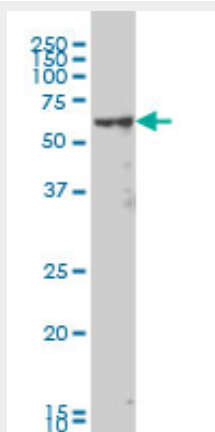
MAK Antibody (monoclonal) (M02) - Images



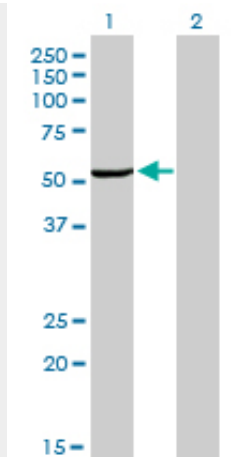
Immunofluorescence of monoclonal antibody to MAK on HeLa cell. [antibody concentration 10 ug/ml]



Antibody Reactive Against Recombinant Protein. Western Blot detection against Immunogen (36.41 KDa) .



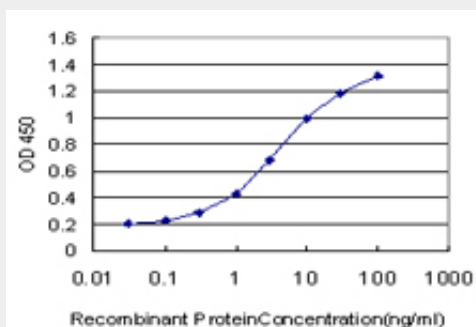
MAK monoclonal antibody (M02), clone 4E9 Western Blot analysis of MAK expression in HeLa S3 NE ((Cat # AT2768a)



Western Blot analysis of MAK expression in transfected 293T cell line by MAK monoclonal antibody (M02), clone 4E9.

Lane 1: MAK transfected lysate(52.6 KDa).

Lane 2: Non-transfected lysate.



Detection limit for recombinant GST tagged MAK is approximately 0.3ng/ml as a capture antibody.

MAK Antibody (monoclonal) (M02) - Background

The product of this gene is a serine/threonine protein kinase related to kinases involved in cell cycle regulation. It is expressed almost exclusively in the testis, primarily in germ cells. Studies of the mouse and rat homologs have localized the kinase to the chromosomes during meiosis in spermatogenesis, specifically to the synaptonemal complex that exists while homologous chromosomes are paired. There is, however, a study of the mouse homolog that has identified high levels of expression in developing sensory epithelia so its function may be more generalized.

MAK Antibody (monoclonal) (M02) - References

Identification of yin-yang regulators and a phosphorylation consensus for male germ cell-associated kinase (MAK)-related kinase. Fu Z, et al. Mol Cell Biol, 2006 Nov. PMID 16954377. Male germ cell-associated kinase, a male-specific kinase regulated by androgen, is a coactivator of androgen receptor in prostate cancer cells. Ma AH, et al. Cancer Res, 2006 Sep 1. PMID 16951154. Complete sequencing and characterization of 21,243 full-length human cDNAs. Ota T, et al. Nat Genet, 2004 Jan. PMID 14702039. The DNA sequence and analysis of human chromosome 6. Mungall AJ, et al. Nature, 2003 Oct 23. PMID 14574404. Generation and initial analysis of more than 15,000 full-length human and mouse cDNA sequences. Strausberg RL, et al. Proc Natl Acad Sci U S A, 2002 Dec 24. PMID 12477932.