

MAPRE2 Antibody (monoclonal) (M03)**Mouse monoclonal antibody raised against a partial recombinant MAPRE2.****Catalog # AT2798a****Specification**

MAPRE2 Antibody (monoclonal) (M03) - Product Information

Application	IF, WB, IHC
Primary Accession	Q15555
Other Accession	NM_014268
Reactivity	Human
Host	mouse
Clonality	Monoclonal
Isotype	IgG1 Kappa
Calculated MW	37031

MAPRE2 Antibody (monoclonal) (M03) - Additional Information**Gene ID** 10982**Other Names**

Microtubule-associated protein RP/EB family member 2, APC-binding protein EB2, End-binding protein 2, EB2, MAPRE2, RP1

Target/Specificity

MAPRE2 (NP_055083, 1 a.a. ~ 62 a.a) partial recombinant protein with GST tag. MW of the GST tag alone is 26 kDa.

Dilution

WB~~1:500~1000

Format

Clear, colorless solution in phosphate buffered saline, pH 7.2 .

Storage

Store at -20°C or lower. Aliquot to avoid repeated freezing and thawing.

Precautions

MAPRE2 Antibody (monoclonal) (M03) is for research use only and not for use in diagnostic or therapeutic procedures.

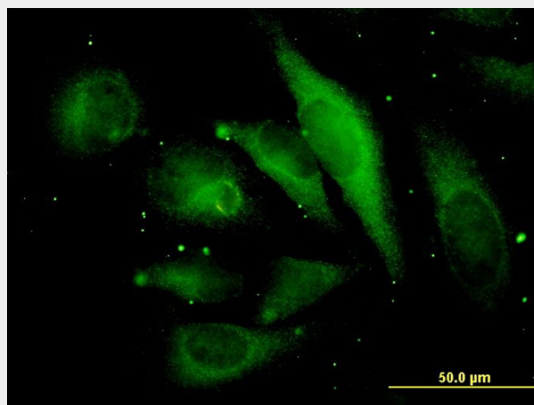
MAPRE2 Antibody (monoclonal) (M03) - Protocols

Provided below are standard protocols that you may find useful for product applications.

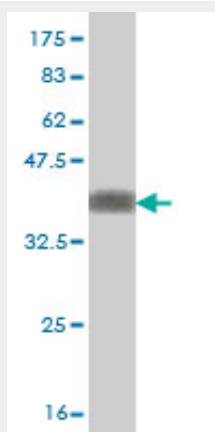
- [Western Blot](#)
- [Blocking Peptides](#)
- [Dot Blot](#)

- [Immunohistochemistry](#)
- [Immunofluorescence](#)
- [Immunoprecipitation](#)
- [Flow Cytometry](#)
- [Cell Culture](#)

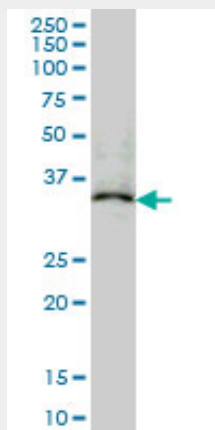
MAPRE2 Antibody (monoclonal) (M03) - Images



Immunofluorescence of monoclonal antibody to MAPRE2 on HeLa cell. [antibody concentration 35 ug/ml]

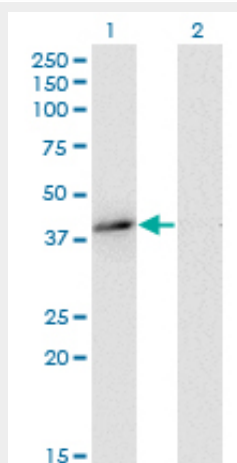


Antibody Reactive Against Recombinant Protein. Western Blot detection against Immunogen (32.93 KDa) .



MAPRE2 monoclonal antibody (M03), clone 4D7 Western Blot analysis of MAPRE2 expression in

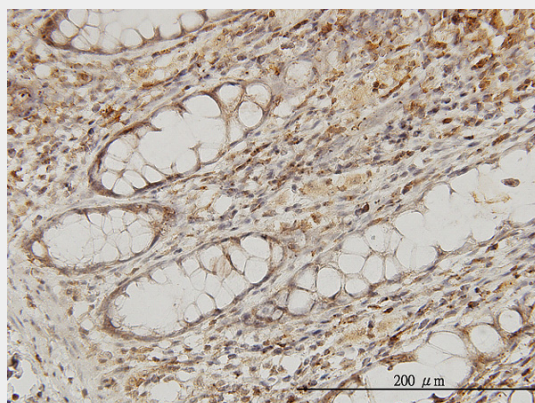
K-562 ((Cat # AT2798a)



Western Blot analysis of MAPRE2 expression in transfected 293T cell line by MAPRE2 monoclonal antibody (M03), clone 4D7.

Lane 1: MAPRE2 transfected lysate (Predicted MW: 37 KDa).

Lane 2: Non-transfected lysate.



Immunoperoxidase of monoclonal antibody to MAPRE2 on formalin-fixed paraffin-embedded human colon. [antibody concentration 3 ug/ml]

MAPRE2 Antibody (monoclonal) (M03) - Background

The protein encoded by this gene shares significant homology to the adenomatous polyposis coli (APC) protein-binding EB1 gene family. The function of this protein is unknown; however, its homology suggests involvement in tumorigenesis of colorectal cancers and proliferative control of normal cells. This gene may belong to the intermediate/early gene family, involved in the signal transduction cascade downstream of the TCR. Alternative splicing results in multiple transcript variants.

MAPRE2 Antibody (monoclonal) (M03) - References

Personalized smoking cessation: interactions between nicotine dose, dependence and quit-success genotype score. Rose JE, et al. Mol Med, 2010 Jul-Aug. PMID 20379614. Molecular insights into mammalian end-binding protein heterodimerization. De Groot CO, et al. J Biol Chem, 2010 Feb 19. PMID 20008324. The microtubule-associated protein MAPRE2 is involved in perineural invasion of pancreatic cancer cells. Abiatari I, et al. Int J Oncol, 2009 Nov. PMID 19787265. Interactions between EB1 and microtubules: dramatic effect of affinity tags and evidence for cooperative behavior. Zhu

ZC, et al. J Biol Chem, 2009 Nov 20. PMID 19778897. Suppression of microtubule dynamic instability by the +TIP protein EB1 and its modulation by the CAP-Gly domain of p150glued. Manna T, et al. Biochemistry, 2008 Jan 15. PMID 18081319.