

**MB Antibody (monoclonal) (M04)****Mouse monoclonal antibody raised against a full length native MB.****Catalog # AT2810a****Specification**

---

**MB Antibody (monoclonal) (M04) - Product Information**

Application	WB
Primary Accession	<a href="#">P02144</a>
Other Accession	<a href="#">4151</a>
Reactivity	Human
Host	Mouse
Clonality	Monoclonal
Isotype	IgG2a, kappa
Calculated MW	17184

**MB Antibody (monoclonal) (M04) - Additional Information****Gene ID** 4151**Other Names**

Myoglobin, MB

**Target/Specificity**

Native purified human MB.

**Dilution**

WB~~1:500~1000

**Format**

Clear, colorless solution in phosphate buffered saline, pH 7.2 .

**Storage**

Store at -20°C or lower. Aliquot to avoid repeated freezing and thawing.

**Precautions**

MB Antibody (monoclonal) (M04) is for research use only and not for use in diagnostic or therapeutic procedures.

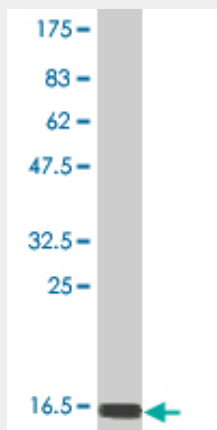
**MB Antibody (monoclonal) (M04) - Protocols**

Provided below are standard protocols that you may find useful for product applications.

- [Western Blot](#)
- [Blocking Peptides](#)
- [Dot Blot](#)
- [Immunohistochemistry](#)
- [Immunofluorescence](#)

- [Immunoprecipitation](#)
- [Flow Cytometry](#)
- [Cell Culture](#)

#### MB Antibody (monoclonal) (M04) - Images



Antibody Reactive Against Native ProteinWestern Blot detection against Immunogen (17.7 kDa)

#### MB Antibody (monoclonal) (M04) - Background

This gene encodes a member of the globin superfamily and is expressed in skeletal and cardiac muscles. The encoded protein is a haemoprotein contributing to intracellular oxygen storage and transcellular facilitated diffusion of oxygen. At least three alternatively spliced transcript variants encoding the same protein have been reported. [provided by RefSeq]