

MDH1 Antibody (monoclonal) (M01)

Mouse monoclonal antibody raised against a full length recombinant MDH1.

Catalog # AT2825a

Specification

MDH1 Antibody (monoclonal) (M01) - Product Information

| | |
|-------------------|--------------------------|
| Application | WB, E |
| Primary Accession | P40925 |
| Other Accession | BC001484 |
| Reactivity | Human |
| Host | mouse |
| Clonality | Monoclonal |
| Isotype | IgG2b Kappa |
| Calculated MW | 36426 |

MDH1 Antibody (monoclonal) (M01) - Additional Information

Gene ID 4190

Other Names

Malate dehydrogenase, cytoplasmic, Cytosolic malate dehydrogenase, Diiodophenylpyruvate reductase, MDH1, MDHA

Target/Specificity

MDH1 (AAH01484.1, 1 a.a. ~ 334 a.a) full-length recombinant protein with GST tag. MW of the GST tag alone is 26 KDa.

Dilution

WB~~1:500~1000

Format

Clear, colorless solution in phosphate buffered saline, pH 7.2 .

Storage

Store at -20°C or lower. Aliquot to avoid repeated freezing and thawing.

Precautions

MDH1 Antibody (monoclonal) (M01) is for research use only and not for use in diagnostic or therapeutic procedures.

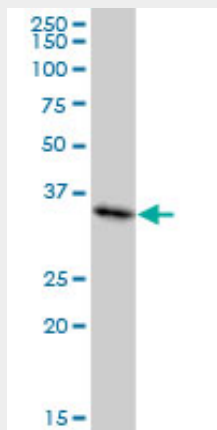
MDH1 Antibody (monoclonal) (M01) - Protocols

Provided below are standard protocols that you may find useful for product applications.

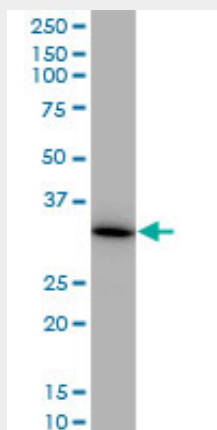
- [Western Blot](#)
- [Blocking Peptides](#)
- [Dot Blot](#)

- [Immunohistochemistry](#)
- [Immunofluorescence](#)
- [Immunoprecipitation](#)
- [Flow Cytometry](#)
- [Cell Culture](#)

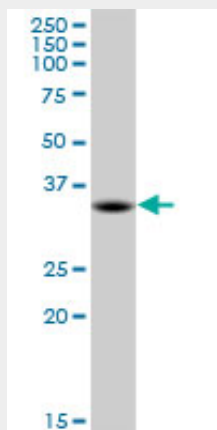
MDH1 Antibody (monoclonal) (M01) - Images



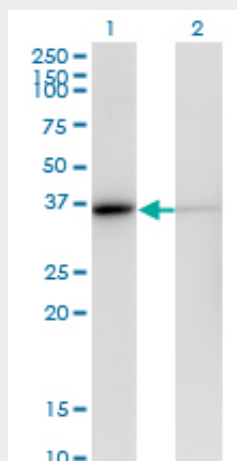
MDH1 monoclonal antibody (M01), clone 2B11-B7. Western Blot analysis of MDH1 expression in HeLa (Cat # L013V1).



MDH1 monoclonal antibody (M01), clone 2B11-B7. Western Blot analysis of MDH1 expression in HepG2 ((Cat # AT2825a)



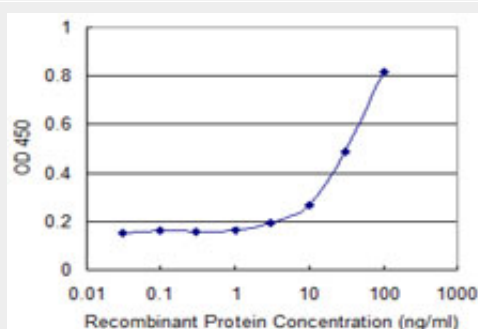
MDH1 monoclonal antibody (M01), clone 2B11-B7. Western Blot analysis of MDH1 expression in HL-60 (Cat # AT2825a)



Western Blot analysis of MDH1 expression in transfected 293T cell line by MDH1 monoclonal antibody (M01), clone 2B11-B7.

Lane 1: MDH1 transfected lysate(36.4 KDa).

Lane 2: Non-transfected lysate.



Detection limit for recombinant GST tagged MDH1 is approximately 3ng/ml as a capture antibody.

MDH1 Antibody (monoclonal) (M01) - Background

Malate dehydrogenase catalyzes the reversible oxidation of malate to oxaloacetate, utilizing the NAD/NADH cofactor system in the citric acid cycle. The protein encoded by this gene is localized to the cytoplasm and may play pivotal roles in the malate-aspartate shuttle that operates in the metabolic coordination between cytosol and mitochondria.

MDH1 Antibody (monoclonal) (M01) - References

Physiogenomic analysis of statin-treated patients: domain-specific counter effects within the ACACB gene on low-density lipoprotein cholesterol? Ruafo G, et al. Pharmacogenomics, 2010 Jul. PMID 20602615. Ultra high throughput sequencing excludes MDH1 as candidate gene for RP28-linked retinitis pigmentosa. Rio Frio T, et al. Mol Vis, 2009 Dec 8. PMID 20011630. A nucleocytoplasmic malate dehydrogenase regulates p53 transcriptional activity in response to metabolic stress. Lee SM, et al. Cell Death Differ, 2009 May. PMID 19229245. Proteomic analysis of dorsolateral prefrontal cortex indicates the involvement of cytoskeleton, oligodendrocyte, energy metabolism and new potential markers in schizophrenia. Martins-de-Souza D, et al. J Psychiatr Res, 2009 Jul. PMID 19110265. Physiogenomic comparison of edema and BMI in patients receiving rosiglitazone or pioglitazone. Ruafo G, et al. Clin Chim Acta, 2009 Feb. PMID 18996102.