

MS4A12 Antibody (monoclonal) (M01)

Mouse monoclonal antibody raised against a full length recombinant MS4A12.

Catalog # AT2908a

Specification

MS4A12 Antibody (monoclonal) (M01) - Product Information

Application	WB, E
Primary Accession	O9NXJ0
Other Accession	BC029793
Reactivity	Human
Host	mouse
Clonality	Monoclonal
Isotype	IgG1 kappa
Calculated MW	28069

MS4A12 Antibody (monoclonal) (M01) - Additional Information

Gene ID 54860

Other Names

Membrane-spanning 4-domains subfamily A member 12, MS4A12

Target/Specificity

MS4A12 (AAH29793, 1 a.a. ~ 267 a.a) full-length recombinant protein with GST tag. MW of the GST tag alone is 26 KDa.

Dilution

WB~~1:500~1000

Format

Clear, colorless solution in phosphate buffered saline, pH 7.2 .

Storage

Store at -20°C or lower. Aliquot to avoid repeated freezing and thawing.

Precautions

MS4A12 Antibody (monoclonal) (M01) is for research use only and not for use in diagnostic or therapeutic procedures.

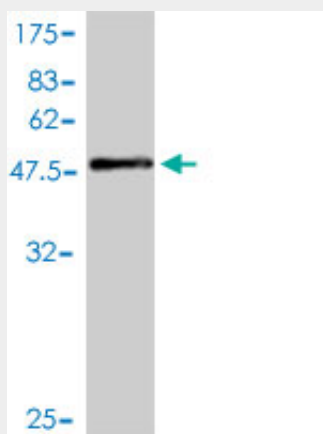
MS4A12 Antibody (monoclonal) (M01) - Protocols

Provided below are standard protocols that you may find useful for product applications.

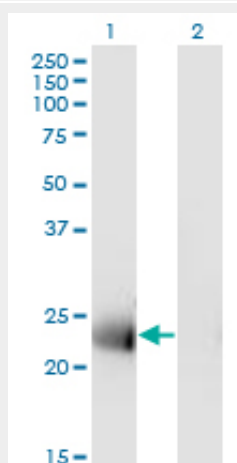
- [Western Blot](#)
- [Blocking Peptides](#)
- [Dot Blot](#)
- [Immunohistochemistry](#)

- [Immunofluorescence](#)
- [Immunoprecipitation](#)
- [Flow Cytometry](#)
- [Cell Culture](#)

MS4A12 Antibody (monoclonal) (M01) - Images

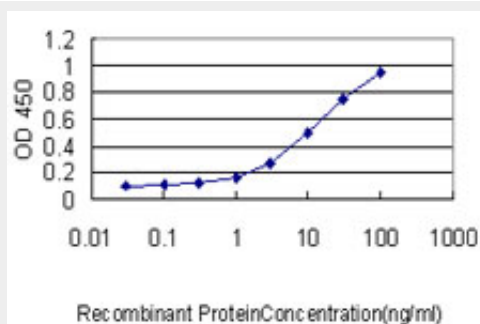


Antibody Reactive Against Recombinant Protein. Western Blot detection against Immunogen (55.11 kDa) .



Western Blot analysis of MS4A12 expression in transfected 293T cell line by MS4A12 monoclonal antibody (M01), clone 4F4.

Lane 1: MS4A12 transfected lysate (Predicted MW: 28.1 kDa).
Lane 2: Non-transfected lysate.



Detection limit for recombinant GST tagged MS4A12 is approximately 0.3ng/ml as a capture antibody.

MS4A12 Antibody (monoclonal) (M01) - Background

The protein encoded by this gene is a cell surface protein found primarily in the apical membrane of colonocytes. Silencing of this gene in colon cancer cells inhibits the proliferation, cell motility, and chemotactic invasion of cells. This gene is part of a cluster of similar genes found on chromosome 11. Two transcript variants encoding different isoforms have been found for this gene.

MS4A12 Antibody (monoclonal) (M01) - References

Selective activation of tumor growth-promoting Ca²⁺ channel MS4A12 in colon cancer by caudal type homeobox transcription factor CDX2. Koslowski M, et al. Mol Cancer, 2009 Sep 25. PMID 19781065. MS4A12 is a colon-selective store-operated calcium channel promoting malignant cell processes. Koslowski M, et al. Cancer Res, 2008 May 1. PMID 18451174. The status, quality, and expansion of the NIH full-length cDNA project: the Mammalian Gene Collection (MGC). Gerhard DS, et al. Genome Res, 2004 Oct. PMID 15489334. Sequence comparison of human and mouse genes reveals a homologous block structure in the promoter regions. Suzuki Y, et al. Genome Res, 2004 Sep. PMID 15342556. Complete sequencing and characterization of 21,243 full-length human cDNAs. Ota T, et al. Nat Genet, 2004 Jan. PMID 14702039.