

MSLN Antibody (monoclonal) (M02)**Mouse monoclonal antibody raised against a partial recombinant MSLN.****Catalog # AT2917a****Specification**

MSLN Antibody (monoclonal) (M02) - Product Information

Application	IP, WB, E
Primary Accession	Q13421
Other Accession	NM_005823
Reactivity	Human
Host	Mouse
Clonality	Monoclonal
Isotype	IgG2b Kappa
Calculated MW	68986

MSLN Antibody (monoclonal) (M02) - Additional Information**Gene ID** 10232**Other Names**

Mesothelin, CAK1 antigen, Pre-pro-megakaryocyte-potentiating factor, Megakaryocyte-potentiating factor, MPF, Mesothelin, cleaved form, MSLN, MPF

Target/Specificity

MSLN (NP_005814, 464 a.a. ~ 563 a.a) partial recombinant protein with GST tag. MW of the GST tag alone is 26 KDa.

Dilution

WB~~1:500~1000

Format

Clear, colorless solution in phosphate buffered saline, pH 7.2 .

Storage

Store at -20°C or lower. Aliquot to avoid repeated freezing and thawing.

Precautions

MSLN Antibody (monoclonal) (M02) is for research use only and not for use in diagnostic or therapeutic procedures.

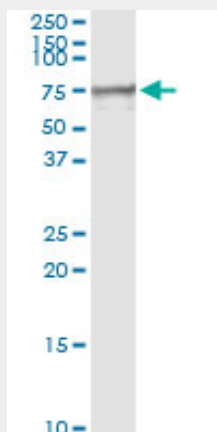
MSLN Antibody (monoclonal) (M02) - Protocols

Provided below are standard protocols that you may find useful for product applications.

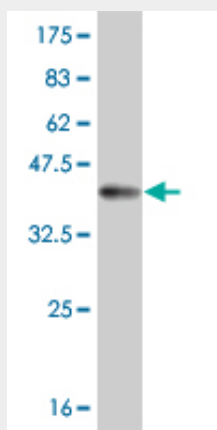
- [Western Blot](#)
- [Blocking Peptides](#)
- [Dot Blot](#)

- [Immunohistochemistry](#)
- [Immunofluorescence](#)
- [Immunoprecipitation](#)
- [Flow Cytometry](#)
- [Cell Culture](#)

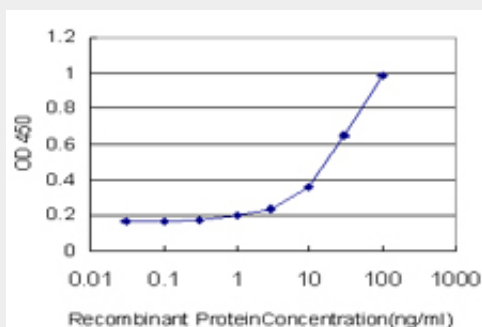
MSLN Antibody (monoclonal) (M02) - Images



Immunoprecipitation of MSLN transfected lysate using anti-MSLN monoclonal antibody and Protein A Magnetic Bead ([U0007](#)), and immunoblotted with MSLN MaxPab rabbit polyclonal antibody.



Antibody Reactive Against Recombinant Protein. Western Blot detection against Immunogen (36.74 KDa) .



Detection limit for recombinant GST tagged MSLN is approximately 1ng/ml as a capture antibody.

MSLN Antibody (monoclonal) (M02) - Background

This gene encodes a precursor protein that is cleaved into two products, megakaryocyte potentiating factor and mesothelin. Megakaryocyte potentiating factor functions as a cytokine that can stimulate colony formation in bone marrow megakaryocytes. Mesothelin is a glycosylphosphatidylinositol-anchored cell-surface protein that may function as a cell adhesion protein. This protein is overexpressed in epithelial mesotheliomas, ovarian cancers and in specific squamous cell carcinomas. Alternative splicing results in multiple transcript variants.

MSLN Antibody (monoclonal) (M02) - References

Mesothelin (MSLN) promoter is hypomethylated in malignant mesothelioma, but its expression is not associated with methylation status of the promoter. Tan K, et al. Hum Pathol, 2010 Sep. PMID 20573372. A Large-scale genetic association study of esophageal adenocarcinoma risk. Liu CY, et al. Carcinogenesis, 2010 Jul. PMID 20453000. Mesothelin gene expression and promoter methylation/hypomethylation in gynecological tumors. Obulhasim G, et al. Eur J Gynaecol Oncol, 2010. PMID 20349783. Soluble mesothelin related peptides (SMRP) and osteopontin as protein biomarkers for malignant mesothelioma: analytical validation of ELISA based assays and characterization at mRNA and protein levels. Rai AJ, et al. Clin Chem Lab Med, 2010 Feb. PMID 20131968. Polymorphisms in the putative micro-RNA-binding sites of mesothelin gene are associated with serum levels of mesothelin-related protein. Cristaudo A, et al. Occup Environ Med, 2010 Apr. PMID 19858537.