

**MYL5 Antibody (monoclonal) (M03)****Mouse monoclonal antibody raised against a partial recombinant MYL5.****Catalog # AT2954a****Specification**

---

**MYL5 Antibody (monoclonal) (M03) - Product Information**

Application	WB, E
Primary Accession	<a href="#">Q02045</a>
Other Accession	<a href="#">NM_002477</a>
Reactivity	Human
Host	mouse
Clonality	Monoclonal
Isotype	IgG1 Kappa
Calculated MW	19534

**MYL5 Antibody (monoclonal) (M03) - Additional Information****Gene ID** 4636**Other Names**

Myosin light chain 5, Myosin regulatory light chain 5, Superfast myosin regulatory light chain 2, MYLC2, MyLC-2, MYL5

**Target/Specificity**

MYL5 (NP\_002468, 4 a.a. ~ 96 a.a) partial recombinant protein with GST tag. MW of the GST tag alone is 26 KDa.

**Dilution**

WB~~1:500~1000

**Format**

Clear, colorless solution in phosphate buffered saline, pH 7.2 .

**Storage**

Store at -20°C or lower. Aliquot to avoid repeated freezing and thawing.

**Precautions**

MYL5 Antibody (monoclonal) (M03) is for research use only and not for use in diagnostic or therapeutic procedures.

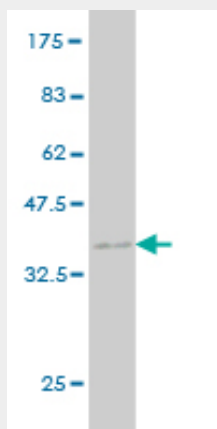
**MYL5 Antibody (monoclonal) (M03) - Protocols**

Provided below are standard protocols that you may find useful for product applications.

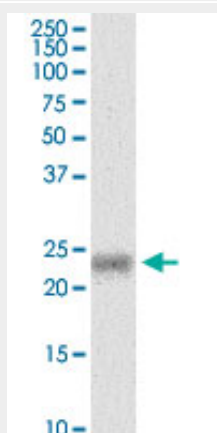
- [Western Blot](#)
- [Blocking Peptides](#)
- [Dot Blot](#)

- [Immunohistochemistry](#)
- [Immunofluorescence](#)
- [Immunoprecipitation](#)
- [Flow Cytometry](#)
- [Cell Culture](#)

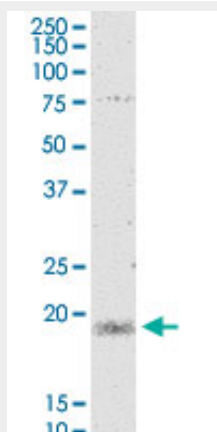
### MYL5 Antibody (monoclonal) (M03) - Images



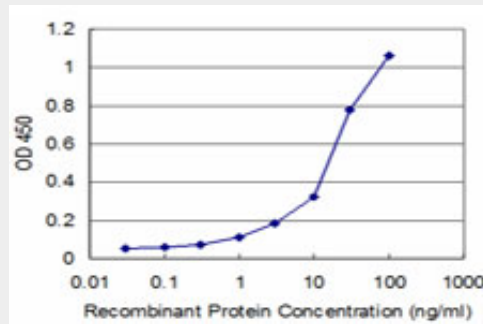
Antibody Reactive Against Recombinant Protein. Western Blot detection against Immunogen (35.97 kDa) .



MYL5 monoclonal antibody (M03), clone 3D12. Western Blot analysis of MYL5 expression in human colon.



MYL5 monoclonal antibody (M03), clone 3D12. Western Blot analysis of MYL5 expression in Jurkat.



Detection limit for recombinant GST tagged MYL5 is approximately 3ng/ml as a capture antibody.

### **MYL5 Antibody (monoclonal) (M03) - Background**

This gene encodes one of the myosin light chains, a component of the hexameric ATPase cellular motor protein myosin. Myosin is composed of two heavy chains, two nonphosphorylatable alkali light chains, and two phosphorylatable regulatory light chains. This gene product, one of the regulatory light chains, is expressed in fetal muscle and in adult retina, cerebellum, and basal ganglia.

### **MYL5 Antibody (monoclonal) (M03) - References**

Human variation in alcohol response is influenced by variation in neuronal signaling genes. Joslyn G, et al. Alcohol Clin Exp Res, 2010 May. PMID 20201926. Complete sequencing and characterization of 21,243 full-length human cDNAs. Ota T, et al. Nat Genet, 2004 Jan. PMID 14702039. Generation and initial analysis of more than 15,000 full-length human and mouse cDNA sequences. Strausberg RL, et al. Proc Natl Acad Sci U S A, 2002 Dec 24. PMID 12477932. Myosins: a diverse superfamily. Sellers JR. Biochim Biophys Acta, 2000 Mar 17. PMID 10722873. The genomic organization of a novel regulatory myosin light chain gene (MYL5) that maps to chromosome 4p16.3 and shows different patterns of expression between primates. Collins C, et al. Hum Mol Genet, 1992 Dec. PMID 1284596.