

**MYOC Antibody (monoclonal) (M01)****Mouse monoclonal antibody raised against a partial recombinant MYOC.****Catalog # AT2961a****Specification**

---

**MYOC Antibody (monoclonal) (M01) - Product Information**

Application	IP, WB, IHC, E
Primary Accession	<a href="#">Q99972</a>
Other Accession	<a href="#">BC029261</a>
Reactivity	Human
Host	mouse
Clonality	Monoclonal
Isotype	IgG1 Kappa
Calculated MW	56972

**MYOC Antibody (monoclonal) (M01) - Additional Information****Gene ID** 4653**Other Names**

Myocilin, Myocilin 55 kDa subunit, Trabecular meshwork-induced glucocorticoid response protein, Myocilin, N-terminal fragment, Myocilin 20 kDa N-terminal fragment, Myocilin, C-terminal fragment, Myocilin 35 kDa N-terminal fragment, MYOC, GLC1A, TIGR

**Target/Specificity**

MYOC (AAH29261, 36 a.a. ~ 135 a.a) partial recombinant protein with GST tag. MW of the GST tag alone is 26 kDa.

**Dilution**

WB~~1:500~1000

**Format**

Clear, colorless solution in phosphate buffered saline, pH 7.2 .

**Storage**

Store at -20°C or lower. Aliquot to avoid repeated freezing and thawing.

**Precautions**

MYOC Antibody (monoclonal) (M01) is for research use only and not for use in diagnostic or therapeutic procedures.

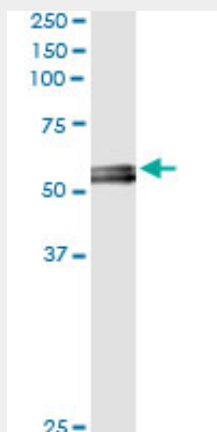
**MYOC Antibody (monoclonal) (M01) - Protocols**

Provided below are standard protocols that you may find useful for product applications.

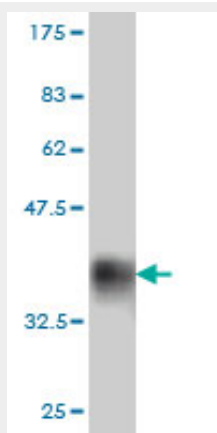
- [Western Blot](#)
- [Blocking Peptides](#)

- [Dot Blot](#)
- [Immunohistochemistry](#)
- [Immunofluorescence](#)
- [Immunoprecipitation](#)
- [Flow Cytometry](#)
- [Cell Culture](#)

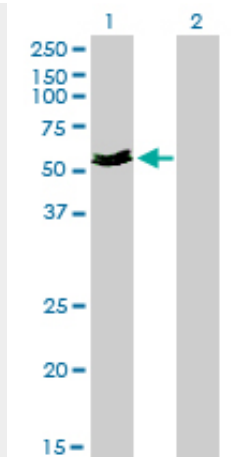
#### MYOC Antibody (monoclonal) (M01) - Images



Immunoprecipitation of MYOC transfected lysate using anti-MYOC monoclonal antibody and Protein A Magnetic Bead ([U0007](#)), and immunoblotted with MYOC MaxPab rabbit polyclonal antibody.



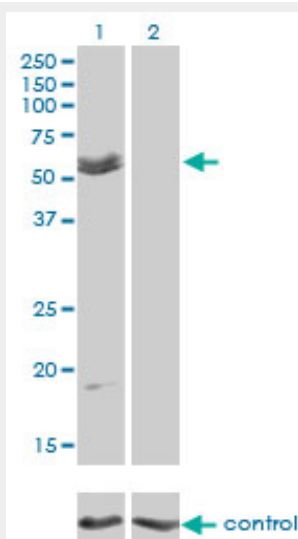
Antibody Reactive Against Recombinant Protein. Western Blot detection against Immunogen (36.63 kDa) .



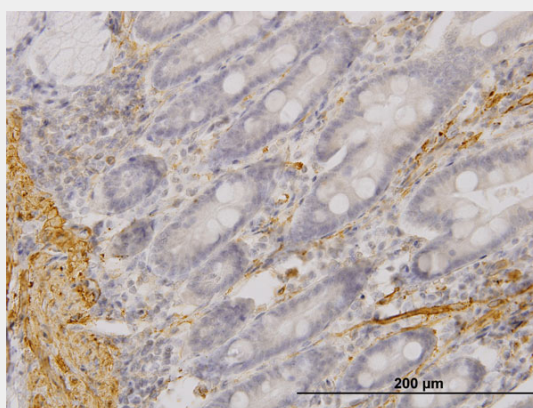
Western Blot analysis of MYOC expression in transfected 293T cell line by MYOC monoclonal antibody (M01), clone 4F8.

Lane 1: MYOC transfected lysate(57 KDa).

Lane 2: Non-transfected lysate.

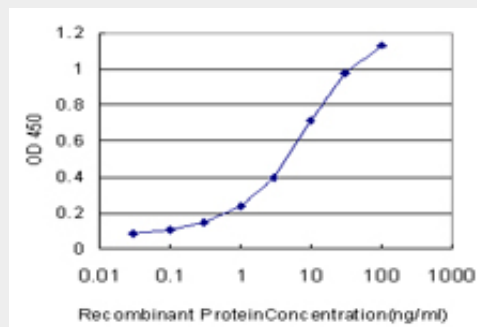


Western blot analysis of MYOC over-expressed 293 cell line, cotransfected with MYOC Validated Chimera RNAi (Cat # AT2961a)



Immunoperoxidase of monoclonal antibody to MYOC on formalin-fixed paraffin-embedded human

small Intestine. [antibody concentration 3 ug/ml]



Detection limit for recombinant GST tagged MYOC is approximately 0.3ng/ml as a capture antibody.

### **MYOC Antibody (monoclonal) (M01) - Background**

MYOC encodes the protein myocilin, which is believed to have a role in cytoskeletal function. MYOC is expressed in many ocular tissues, including the trabecular meshwork, and was revealed to be the trabecular meshwork glucocorticoid-inducible response protein (TIGR). The trabecular meshwork is a specialized eye tissue essential in regulating intraocular pressure, and mutations in MYOC have been identified as the cause of hereditary juvenile-onset open-angle glaucoma.

### **MYOC Antibody (monoclonal) (M01) - References**

Myocilin and optineurin coding variants in Hispanics of Mexican descent with POAG. McDonald KK, et al. J Hum Genet, 2010 Jul 29. PMID 20668460. Little evidence for association of the glaucoma gene MYOC with open-angle glaucoma. Sohn S, et al. Br J Ophthalmol, 2010 May. PMID 20447966. [Genetic variants of CYP1B1 and WDR36 in the patients with primary congenital glaucoma and primary open angle glaucoma from Saint-Petersburg] Motushchuk AE, et al. Genetika, 2009 Dec. PMID 20198978. Association of POAG risk factors and the Thr377Met MYOC mutation in an isolated Greek population. Wirtz MK, et al. Invest Ophthalmol Vis Sci, 2010 Jun. PMID 20107173. Variable clinical spectrum of the myocilin Gln368X mutation in a Dutch family with primary open angle glaucoma. Hogewind BF, et al. Curr Eye Res, 2010 Jan. PMID 20021252.