

NBR1 Antibody (monoclonal) (M05)**Mouse monoclonal antibody raised against a partial recombinant NBR1.****Catalog # AT2978a****Specification**

NBR1 Antibody (monoclonal) (M05) - Product Information

Application	WB, E
Primary Accession	Q14596
Other Accession	NM_005899
Reactivity	Human
Host	Mouse
Clonality	Monoclonal
Isotype	IgG2a Kappa
Calculated MW	107413

NBR1 Antibody (monoclonal) (M05) - Additional Information**Gene ID** 4077**Other Names**

Next to BRCA1 gene 1 protein, Cell migration-inducing gene 19 protein, Membrane component chromosome 17 surface marker 2, Neighbor of BRCA1 gene 1 protein, Protein 1A1-3B, NBR1, 1A13B, KIAA0049, M17S2

Target/Specificity

NBR1 (NP_005890, 2 a.a. ~ 96 a.a) partial recombinant protein with GST tag. MW of the GST tag alone is 26 KDa.

Dilution

WB~~1:500~1000

Format

Clear, colorless solution in phosphate buffered saline, pH 7.2 .

Storage

Store at -20°C or lower. Aliquot to avoid repeated freezing and thawing.

Precautions

NBR1 Antibody (monoclonal) (M05) is for research use only and not for use in diagnostic or therapeutic procedures.

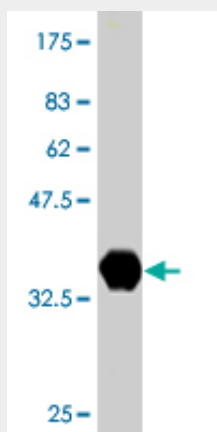
NBR1 Antibody (monoclonal) (M05) - Protocols

Provided below are standard protocols that you may find useful for product applications.

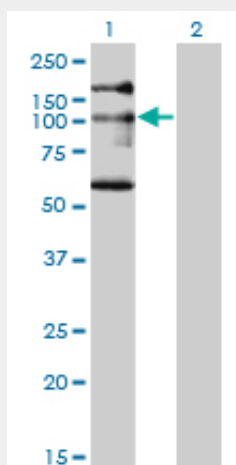
- [Western Blot](#)
- [Blocking Peptides](#)

- [Dot Blot](#)
- [Immunohistochemistry](#)
- [Immunofluorescence](#)
- [Immunoprecipitation](#)
- [Flow Cytometry](#)
- [Cell Culture](#)

NBR1 Antibody (monoclonal) (M05) - Images

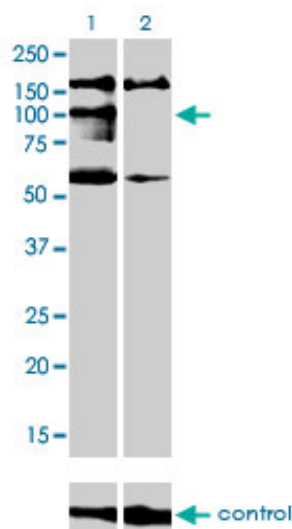


Antibody Reactive Against Recombinant Protein. Western Blot detection against Immunogen (36.19 kDa) .

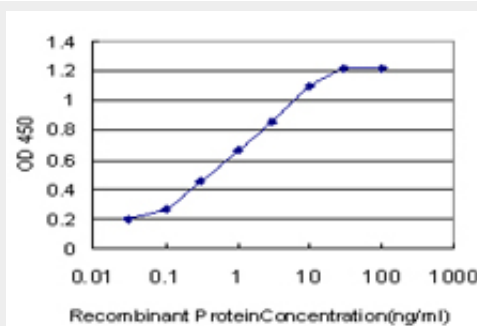


Western Blot analysis of NBR1 expression in transfected 293T cell line by NBR1 monoclonal antibody (M05), clone 5C3.

Lane 1: NBR1 transfected lysate(107.4 kDa).
Lane 2: Non-transfected lysate.



Western blot analysis of NBR1 over-expressed 293 cell line, cotransfected with NBR1 Validated Chimera RNAi (Cat # AT2978a)



Detection limit for recombinant GST tagged NBR1 is approximately 0.03ng/ml as a capture antibody.

NBR1 Antibody (monoclonal) (M05) - Background

The protein encoded by this gene was originally identified as an ovarian tumor antigen monitored in ovarian cancer. The encoded protein contains a B-box/coiled coil motif, which is present in many genes with transformation potential, but the function of this protein is unknown. This gene is located on a region of chromosome 17q21.1 that is in close proximity to tumor suppressor gene BRCA1. Three alternatively spliced variants encoding the same protein have been identified for this gene.

NBR1 Antibody (monoclonal) (M05) - References

Personalized smoking cessation: interactions between nicotine dose, dependence and quit-success genotype score. Rose JE, et al. Mol Med, 2010 Jul-Aug. PMID 20379614. Spred2 interaction with the late endosomal protein NBR1 down-regulates fibroblast growth factor receptor signaling. Mardakheh FK, et al. J Cell Biol, 2009 Oct 19. PMID 19822672. Interactions with LC3 and polyubiquitin chains link nbr1 to autophagic protein turnover. Waters S, et al. FEBS Lett, 2009 Jun 18. PMID 19427866. NBR1 cooperates with p62 in selective autophagy of ubiquitinated targets. Kirkin V, et al. Autophagy, 2009 Jul. PMID 19398892. A role for NBR1 in autophagosomal degradation of ubiquitinated substrates. Kirkin V, et al. Mol Cell, 2009 Feb 27. PMID 19250911.