

NME2 Antibody (monoclonal) (M11)**Mouse monoclonal antibody raised against a partial recombinant NME2.****Catalog # AT3069a****Specification**

NME2 Antibody (monoclonal) (M11) - Product Information

| | |
|-------------------|---------------------------|
| Application | IF, WB, E |
| Primary Accession | P22392 |
| Other Accession | NM_002512 |
| Reactivity | Human, Mouse, Rat |
| Host | mouse |
| Clonality | Monoclonal |
| Isotype | IgG3 Kappa |
| Calculated MW | 17298 |

NME2 Antibody (monoclonal) (M11) - Additional Information**Gene ID** 4831;654364**Other Names**

Nucleoside diphosphate kinase B, NDK B, NDP kinase B, C-myc purine-binding transcription factor PUF, Histidine protein kinase NDKB, nm23-H2, NME2, NM23B

Target/Specificity

NME2 (NP_002503, 51 a.a. ~ 152 a.a) partial recombinant protein with GST tag. MW of the GST tag alone is 26 KDa.

Dilution

WB~~1:500~1000

Format

Clear, colorless solution in phosphate buffered saline, pH 7.2 .

Storage

Store at -20°C or lower. Aliquot to avoid repeated freezing and thawing.

Precautions

NME2 Antibody (monoclonal) (M11) is for research use only and not for use in diagnostic or therapeutic procedures.

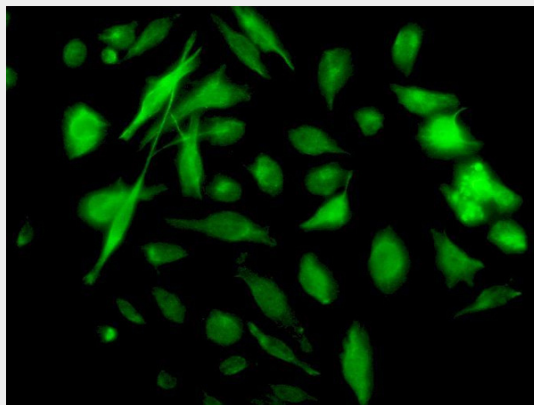
NME2 Antibody (monoclonal) (M11) - Protocols

Provided below are standard protocols that you may find useful for product applications.

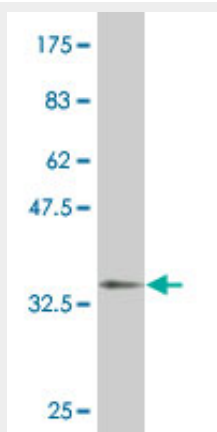
- [Western Blot](#)
- [Blocking Peptides](#)
- [Dot Blot](#)

- [Immunohistochemistry](#)
- [Immunofluorescence](#)
- [Immunoprecipitation](#)
- [Flow Cytometry](#)
- [Cell Culture](#)

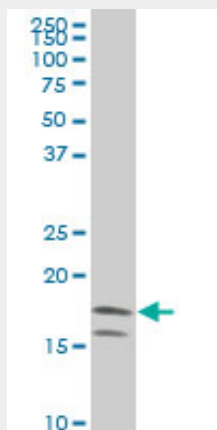
NME2 Antibody (monoclonal) (M11) - Images



Immunofluorescence of monoclonal antibody to NME2 on HeLa cell. [antibody concentration 10 ug/ml]

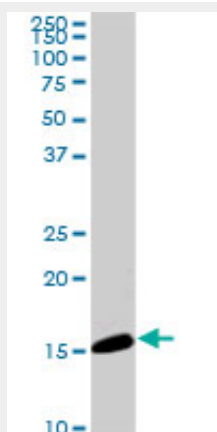


Antibody Reactive Against Recombinant Protein. Western Blot detection against Immunogen (36.96 KDa) .

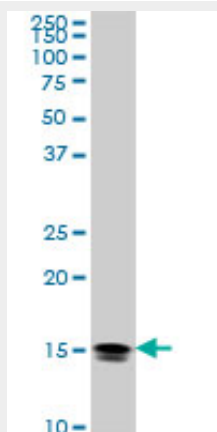


NME2 monoclonal antibody (M11), clone 1E4 Western Blot analysis of NME2 expression in HeLa (

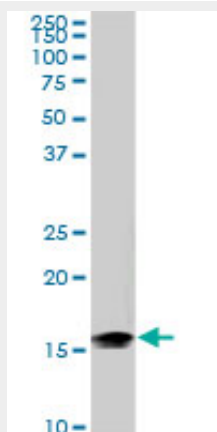
(Cat # AT3069a)



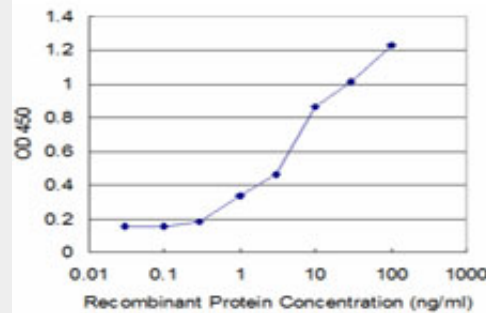
NME2 monoclonal antibody (M11), clone 1E4. Western Blot analysis of NME2 expression in PC-12
((Cat # AT3069a)



NME2 monoclonal antibody (M11), clone 1E4. Western Blot analysis of NME2 expression in Raw
264.7 ((Cat # AT3069a)



NME2 monoclonal antibody (M11), clone 1E4. Western Blot analysis of NME2 expression in
NIH/3T3 ((Cat # AT3069a)



Detection limit for recombinant GST tagged NME2 is approximately 1ng/ml as a capture antibody.

NME2 Antibody (monoclonal) (M11) - Background

Nucleoside diphosphate kinase (NDK) exists as a hexamer composed of 'A' (encoded by NME1) and 'B' (encoded by this gene) isoforms. Multiple alternatively spliced transcript variants encoding the same isoform have been found for this gene. Co-transcription of this gene and the neighboring upstream gene (NME1) generates naturally-occurring transcripts (NME1-NME2) which encode a fusion protein comprised of sequence sharing identity with each individual gene product.

NME2 Antibody (monoclonal) (M11) - References

Nme protein family evolutionary history, a vertebrate perspective. Desvignes T, et al. BMC Evol Biol, 2009 Oct 23. PMID 19852809. Identification and functional characterization of cytoplasmic determinants of plasmid DNA nuclear import. Munkonge FM, et al. J Biol Chem, 2009 Sep 25. PMID 19638341. Transglutaminase 2 and nucleoside diphosphate kinase activity are correlated in epithelial membranes and are abnormal in cystic fibrosis. Treharne KJ, et al. FEBS Lett, 2009 Sep 3. PMID 19619546. Role of nm23 in the regulation of cell shape and migration via Rho family GTPase signals. Miyamoto M, et al. Mol Cell Biochem, 2009 Sep. PMID 19381785. NM23H2 inhibits EGF- and Ras-induced proliferation of NIH3T3 cells by blocking the ERK pathway. Lee MY, et al. Cancer Lett, 2009 Mar 18. PMID 19022560.