

**NPY Antibody (monoclonal) (M01)****Mouse monoclonal antibody raised against a partial recombinant NPY.****Catalog # AT3087a****Specification**

---

**NPY Antibody (monoclonal) (M01) - Product Information**

Application	WB
Primary Accession	<a href="#">P01303</a>
Other Accession	<a href="#">BC029497</a>
Reactivity	Human
Host	mouse
Clonality	Monoclonal
Isotype	IgG1 Kappa
Calculated MW	10851

**NPY Antibody (monoclonal) (M01) - Additional Information****Gene ID** 4852**Other Names**

Pro-neuropeptide Y, Neuropeptide Y, Neuropeptide tyrosine, NPY, C-flanking peptide of NPY, CPON, NPY

**Target/Specificity**

NPY (AAH29497, 29 a.a. ~ 97 a.a) partial recombinant protein with GST tag. MW of the GST tag alone is 26 KDa.

**Dilution**

WB~~1:500~1000

**Format**

Clear, colorless solution in phosphate buffered saline, pH 7.2 .

**Storage**

Store at -20°C or lower. Aliquot to avoid repeated freezing and thawing.

**Precautions**

NPY Antibody (monoclonal) (M01) is for research use only and not for use in diagnostic or therapeutic procedures.

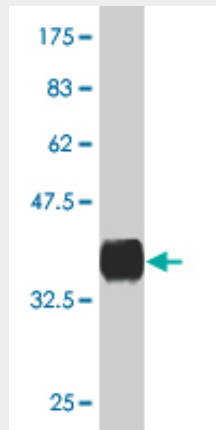
**NPY Antibody (monoclonal) (M01) - Protocols**

Provided below are standard protocols that you may find useful for product applications.

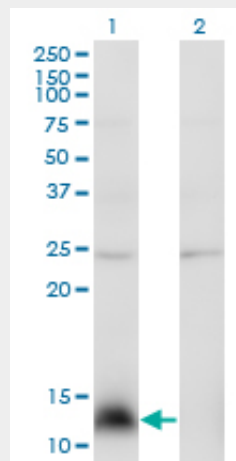
- [Western Blot](#)
- [Blocking Peptides](#)
- [Dot Blot](#)

- [Immunohistochemistry](#)
- [Immunofluorescence](#)
- [Immunoprecipitation](#)
- [Flow Cytometry](#)
- [Cell Culture](#)

### NPY Antibody (monoclonal) (M01) - Images



Antibody Reactive Against Recombinant Protein. Western Blot detection against Immunogen (33.33 KDa) .



Western Blot analysis of NPY expression in transfected 293T cell line by NPY monoclonal antibody (M01), clone 3B5.

Lane 1: NPY transfected lysate (10.9 KDa).

Lane 2: Non-transfected lysate.

### NPY Antibody (monoclonal) (M01) - Background

This gene encodes a neuropeptide that is widely expressed in the central nervous system and influences many physiological processes, including cortical excitability, stress response, food intake, circadian rhythms, and cardiovascular function. The neuropeptide functions through G protein-coupled receptors to inhibit adenylyl cyclase, activate mitogen-activated protein kinase (MAPK), regulate intracellular calcium levels, and activate potassium channels. A polymorphism in this gene resulting in a change of leucine 7 to proline in the signal peptide is associated with elevated cholesterol levels, higher alcohol consumption, and may be a risk factor for various

metabolic and cardiovascular diseases.

#### **NPY Antibody (monoclonal) (M01) - References**

1. Neuropeptide Y influences acute food intake and energy status affects NPY immunoreactivity in the female musk shrew (*Suncus murinus*). Bojkowska K, Hamczyk MM, Tsai HW, Riggan A, Rissman EF. *Horm Behav*. 2008 Feb;53(2):342-50. Epub 2007 Nov 17.

#### **NPY Antibody (monoclonal) (M01) - Citations**

- [Opposing roles of corticotropin-releasing factor and neuropeptide Y within the dorsolateral bed nucleus of the stria terminalis in the negative affective component of pain in rats.](#)