

NUCB1 Antibody (monoclonal) (M01)

Mouse monoclonal antibody raised against a full length recombinant NUCB1.

Catalog # AT3124a

Specification

NUCB1 Antibody (monoclonal) (M01) - Product Information

Application	IF, WB, IHC, E
Primary Accession	Q02818
Other Accession	BC002356
Reactivity	Human
Host	Mouse
Clonality	Monoclonal
Isotype	IgG1 kappa
Calculated MW	53879

NUCB1 Antibody (monoclonal) (M01) - Additional Information

Gene ID 4924

Other Names

Nucleobindin-1, CALNUC, NUCB1, NUC

Target/Specificity

NUCB1 (AAH02356, 28 a.a. ~ 461 a.a) full-length recombinant protein with GST tag. MW of the GST tag alone is 26 KDa.

Dilution

WB~~1:500~1000

Format

Clear, colorless solution in phosphate buffered saline, pH 7.2 .

Storage

Store at -20°C or lower. Aliquot to avoid repeated freezing and thawing.

Precautions

NUCB1 Antibody (monoclonal) (M01) is for research use only and not for use in diagnostic or therapeutic procedures.

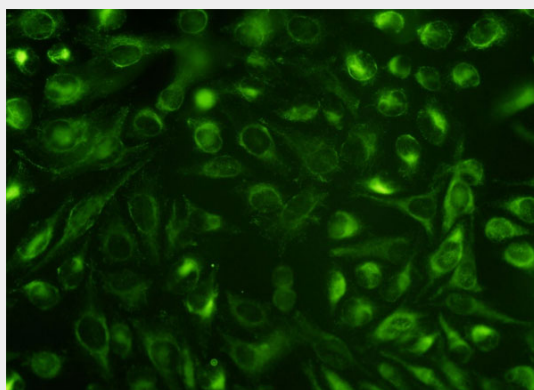
NUCB1 Antibody (monoclonal) (M01) - Protocols

Provided below are standard protocols that you may find useful for product applications.

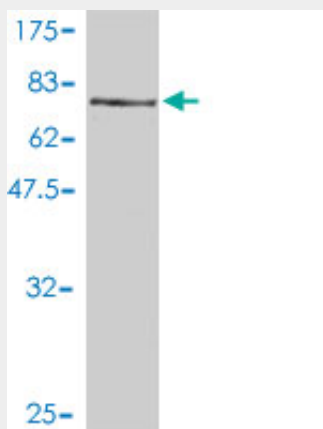
- [Western Blot](#)
- [Blocking Peptides](#)
- [Dot Blot](#)
- [Immunohistochemistry](#)

- [Immunofluorescence](#)
- [Immunoprecipitation](#)
- [Flow Cytometry](#)
- [Cell Culture](#)

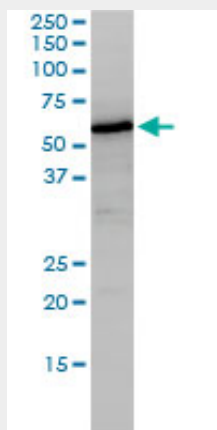
NUCB1 Antibody (monoclonal) (M01) - Images



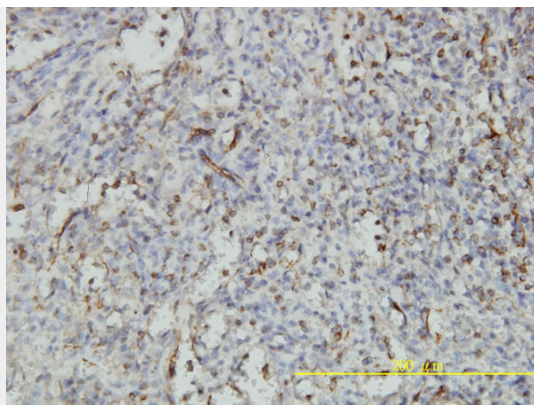
Immunofluorescence of monoclonal antibody to NUCB1 on HeLa cell. [antibody concentration 10 ug/ml]



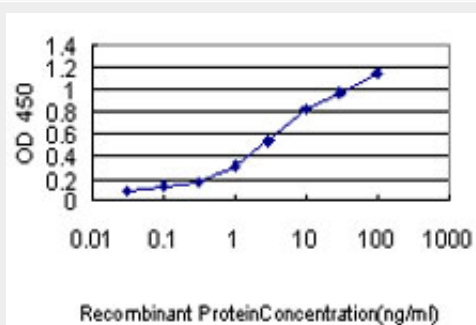
Antibody Reactive Against Recombinant Protein. Western Blot detection against Immunogen (73.48 KDa) .



NUCB1 monoclonal antibody (M01), clone 1H8-2C11 Western Blot analysis of NUCB1 expression in HepG2 ((Cat # AT3124a)



Immunoperoxidase of monoclonal antibody to NUCB1 on formalin-fixed paraffin-embedded human spleen tissue. [antibody concentration 3 ug/ml]



Detection limit for recombinant GST tagged NUCB1 is approximately 0.1ng/ml as a capture antibody.

NUCB1 Antibody (monoclonal) (M01) - Background

This gene encodes a member of a small calcium-binding EF-hand protein family. The encoded protein is thought to have a key role in Golgi calcium homeostasis and Ca(2+)-regulated signal transduction events.

NUCB1 Antibody (monoclonal) (M01) - References

Calnuc: Emerging roles in calcium signaling and human diseases. Aradhyam GK, et al. IUBMB Life, 2010 Jun. PMID 20503436. A novel endoplasmic reticulum export signal: proline at the +2-position from the signal peptide cleavage site. Tsukumo Y, et al. J Biol Chem, 2009 Oct 2. PMID 19656946. Exploration of human ORFeome: high-throughput preparation of ORF clones and efficient characterization of their protein products. Nagase T, et al. DNA Res, 2008 Jun 30. PMID 18316326. Modulation of nucleobindin-1 and nucleobindin-2 by caspases. Valencia CA, et al. FEBS Lett, 2008 Jan 23. PMID 18154733. Toward a confocal subcellular atlas of the human proteome. Barbe L, et al. Mol Cell Proteomics, 2008 Mar. PMID 18029348.