

OCLN Antibody (monoclonal) (M01)**Mouse monoclonal antibody raised against a partial recombinant OCLN.****Catalog # AT3143a****Specification**

OCLN Antibody (monoclonal) (M01) - Product Information

Application	IF, IP, WB, E
Primary Accession	Q16625
Other Accession	NM_002538
Reactivity	Human
Host	Mouse
Clonality	Monoclonal
Isotype	IgG1 Kappa
Calculated MW	59144

OCLN Antibody (monoclonal) (M01) - Additional Information**Gene ID** 100506658**Other Names**

Occludin, OCLN

Target/Specificity

OCLN (NP_002529, 423 a.a. ~ 522 a.a) partial recombinant protein with GST tag. MW of the GST tag alone is 26 KDa.

Dilution

WB~~1:500~1000

Format

Clear, colorless solution in phosphate buffered saline, pH 7.2 .

Storage

Store at -20°C or lower. Aliquot to avoid repeated freezing and thawing.

Precautions

OCLN Antibody (monoclonal) (M01) is for research use only and not for use in diagnostic or therapeutic procedures.

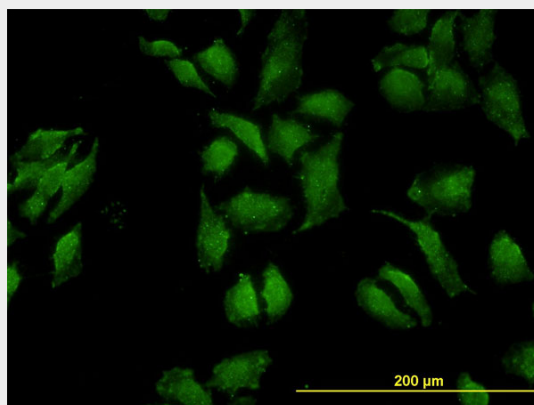
OCLN Antibody (monoclonal) (M01) - Protocols

Provided below are standard protocols that you may find useful for product applications.

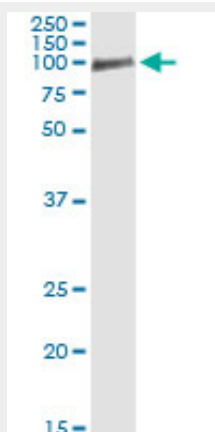
- [Western Blot](#)
- [Blocking Peptides](#)
- [Dot Blot](#)
- [Immunohistochemistry](#)

- [Immunofluorescence](#)
- [Immunoprecipitation](#)
- [Flow Cytometry](#)
- [Cell Culture](#)

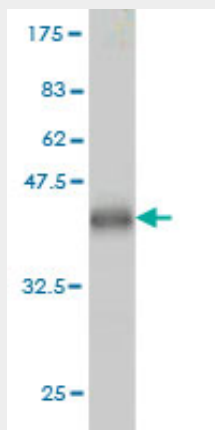
OCLN Antibody (monoclonal) (M01) - Images



Immunofluorescence of monoclonal antibody to OCLN on HeLa cell. [antibody concentration 10 ug/ml]

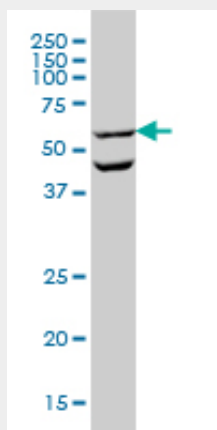


Immunoprecipitation of OCLN transfected lysate using anti-OCLN monoclonal antibody and Protein A Magnetic Bead ([U0007](#)), and immunoblotted with OCLN MaxPab rabbit polyclonal antibody.

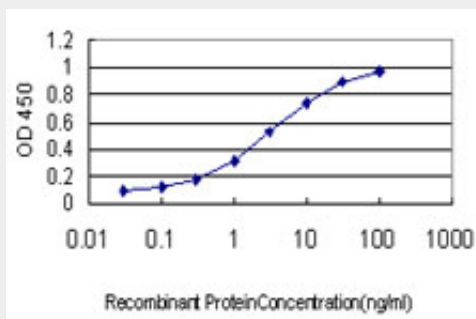


Antibody Reactive Against Recombinant Protein. Western Blot detection against Immunogen

(36.74 KDa) .



OCLN monoclonal antibody (M01), clone 1G7 Western Blot analysis of OCLN expression in HL-60 (Cat # AT3143a)



Detection limit for recombinant GST tagged OCLN is approximately 0.1ng/ml as a capture antibody.

OCLN Antibody (monoclonal) (M01) - Background

This gene encodes an integral membrane protein which is located at tight junctions. This protein may be involved in the formation and maintenance of the tight junction. The possibility of several alternatively spliced products has been suggested but the full nature of these products has not been described.

OCLN Antibody (monoclonal) (M01) - References

Nedd4-2 interacts with occludin to inhibit tight junction formation and enhance paracellular conductance in collecting duct epithelia. Raikwar NS, et al. *Am J Physiol Renal Physiol*, 2010 Aug. PMID 20504882. Splicing diversity of the human OCLN gene and its biological significance for hepatitis C virus entry. Kohaar I, et al. *J Virol*, 2010 Jul. PMID 20463075. Tight junction-associated MARVEL proteins marveld3, tricellulin, and occludin have distinct but overlapping functions. Raleigh DR, et al. *Mol Biol Cell*, 2010 Apr 1. PMID 20164257. The tight junction protein, occludin, regulates the directional migration of epithelial cells. Du D, et al. *Dev Cell*, 2010 Jan 19. PMID 20152177. Identification of MarvelD3 as a tight junction-associated transmembrane protein of the occludin family. Steed E, et al. *BMC Cell Biol*, 2009 Dec 22. PMID 20028514.