

OXSRI Antibody (monoclonal) (M19)**Mouse monoclonal antibody raised against a full length recombinant OXSRI.****Catalog # AT3164a****Specification**

OXSRI Antibody (monoclonal) (M19) - Product Information

Application	IF, WB, IHC, E
Primary Accession	O95747
Other Accession	BC008726.1
Reactivity	Human
Host	mouse
Clonality	Monoclonal
Isotype	IgG2a Kappa
Calculated MW	58022

OXSRI Antibody (monoclonal) (M19) - Additional Information**Gene ID** 9943**Other Names**

Serine/threonine-protein kinase OSR1, Oxidative stress-responsive 1 protein, OXSRI (HGNC:8508)

Target/Specificity

OXSRI (AAH08726.1, 1 a.a. ~ 527 a.a) full-length recombinant protein with GST tag. MW of the GST tag alone is 26 KDa.

Dilution

WB~~1:500~1000

Format

Clear, colorless solution in phosphate buffered saline, pH 7.2 .

Storage

Store at -20°C or lower. Aliquot to avoid repeated freezing and thawing.

Precautions

OXSRI Antibody (monoclonal) (M19) is for research use only and not for use in diagnostic or therapeutic procedures.

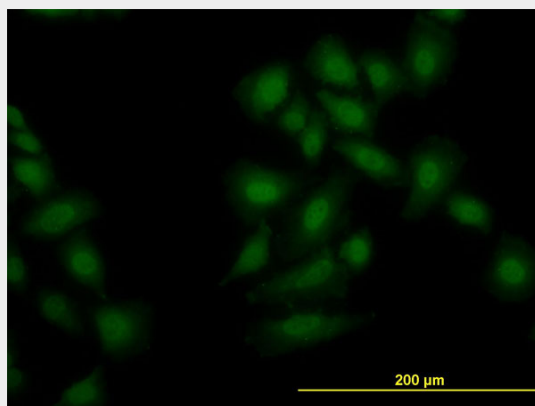
OXSRI Antibody (monoclonal) (M19) - Protocols

Provided below are standard protocols that you may find useful for product applications.

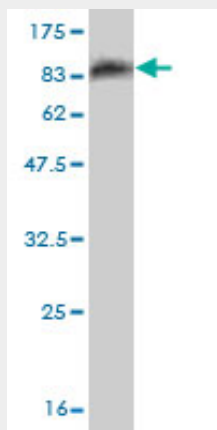
- [Western Blot](#)
- [Blocking Peptides](#)

- [Dot Blot](#)
- [Immunohistochemistry](#)
- [Immunofluorescence](#)
- [Immunoprecipitation](#)
- [Flow Cytometry](#)
- [Cell Culture](#)

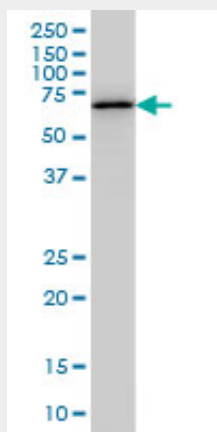
OXSRI Antibody (monoclonal) (M19) - Images



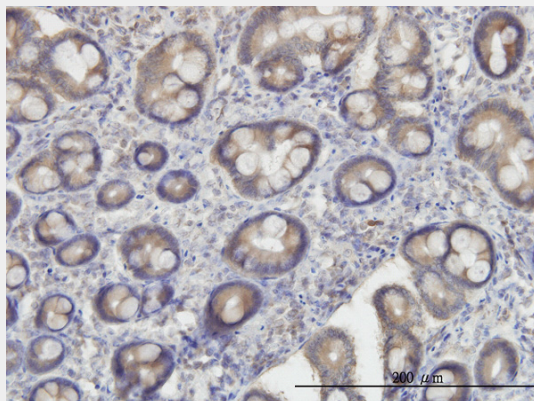
Immunofluorescence of monoclonal antibody to OXSRI on HeLa cell. [antibody concentration 10 ug/ml]



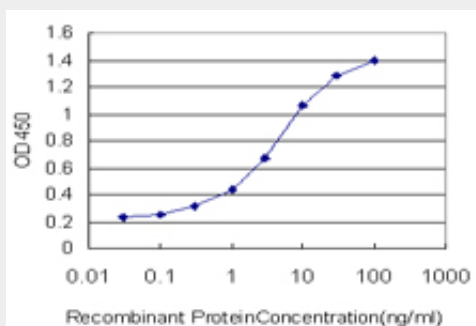
Antibody Reactive Against Recombinant Protein. Western Blot detection against Immunogen (83.71 KDa) .



OXSRI monoclonal antibody (M19), clone 1B9 Western Blot analysis of OXSRI expression in Hela S3 NE (Cat # AT3164a)



Immunoperoxidase of monoclonal antibody to OXSRI on formalin-fixed paraffin-embedded human small Intestine. [antibody concentration 3 ug/ml]



Detection limit for recombinant GST tagged OXSRI is approximately 0.03ng/ml as a capture antibody.

OXSRI Antibody (monoclonal) (M19) - Background

The product of this gene belongs to the Ser/Thr protein kinase family of proteins. It regulates downstream kinases in response to environmental stress, and may play a role in regulating the actin cytoskeleton.

OXSRI Antibody (monoclonal) (M19) - References

Crystal structure of domain-swapped STE20 OSR1 kinase domain. Lee SJ, et al. Protein Sci, 2009 Feb. PMID 19177573. Structure of the OSR1 kinase, a hypertension drug target. Villa F, et al. Proteins, 2008 Dec. PMID 18831043. Activation of the thiazide-sensitive Na⁺-Cl⁻ cotransporter by the WNK-regulated kinases SPAK and OSR1. Richardson C, et al. J Cell Sci, 2008 Mar 1. PMID 18270262. Toward a confocal subcellular atlas of the human proteome. Barbe L, et al. Mol Cell Proteomics, 2008 Mar. PMID 18029348. Structural insights into the recognition of substrates and activators by the OSR1 kinase. Villa F, et al. EMBO Rep, 2007 Sep. PMID 17721439.