

**PAPSS2 Antibody (monoclonal) (M07)****Mouse monoclonal antibody raised against a partial recombinant PAPSS2.****Catalog # AT3179a****Specification**

---

**PAPSS2 Antibody (monoclonal) (M07) - Product Information**

Application	IF, WB, IHC, E
Primary Accession	<a href="#">O95340</a>
Other Accession	<a href="#">NM_004670</a>
Reactivity	Human, Mouse
Host	mouse
Clonality	Monoclonal
Isotype	IgG1 Kappa
Calculated MW	69501

**PAPSS2 Antibody (monoclonal) (M07) - Additional Information****Gene ID** 9060**Other Names**

Bifunctional 3'-phosphoadenosine 5'-phosphosulfate synthase 2, PAPS synthase 2, PAPSS 2, Sulfurylase kinase 2, SK 2, SK2, Sulfate adenylyltransferase, ATP-sulfurylase, Sulfate adenylate transferase, SAT, Adenylyl-sulfate kinase, 3'-phosphoadenosine-5'-phosphosulfate synthase, APS kinase, Adenosine-5'-phosphosulfate 3'-phosphotransferase, Adenylylsulfate 3'-phosphotransferase, PAPSS2, ATPSK2

**Target/Specificity**

PAPSS2 (NP\_004661, 513 a.a. ~ 612 a.a) partial recombinant protein with GST tag. MW of the GST tag alone is 26 KDa.

**Dilution**

WB~~1:500~1000

**Format**

Clear, colorless solution in phosphate buffered saline, pH 7.2 .

**Storage**

Store at -20°C or lower. Aliquot to avoid repeated freezing and thawing.

**Precautions**

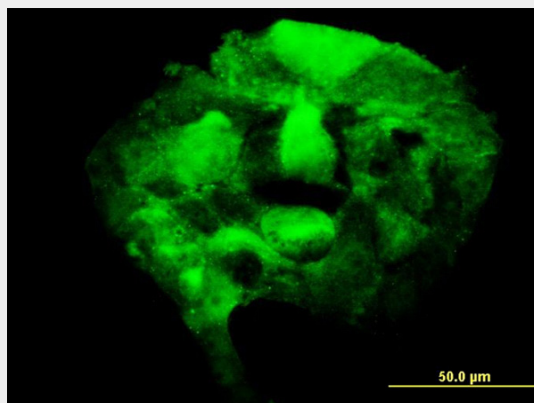
PAPSS2 Antibody (monoclonal) (M07) is for research use only and not for use in diagnostic or therapeutic procedures.

**PAPSS2 Antibody (monoclonal) (M07) - Protocols**

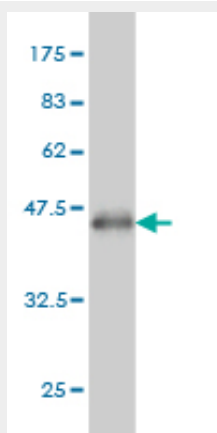
Provided below are standard protocols that you may find useful for product applications.

- [Western Blot](#)
- [Blocking Peptides](#)
- [Dot Blot](#)
- [Immunohistochemistry](#)
- [Immunofluorescence](#)
- [Immunoprecipitation](#)
- [Flow Cytometry](#)
- [Cell Culture](#)

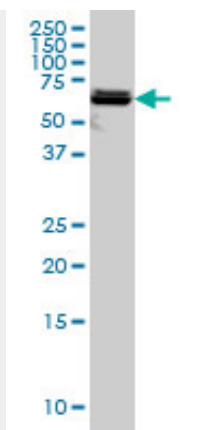
#### PAPSS2 Antibody (monoclonal) (M07) - Images



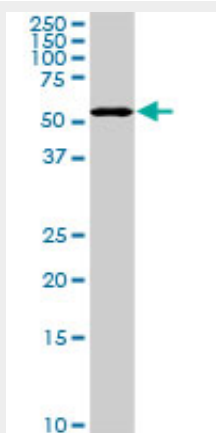
Immunofluorescence of monoclonal antibody to PAPSS2 on A-431 cell. [antibody concentration 10 ug/ml]



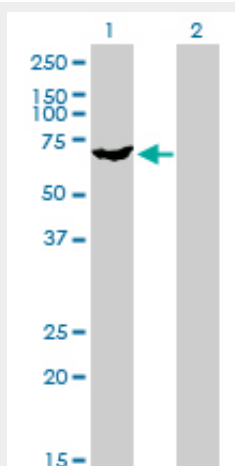
Antibody Reactive Against Recombinant Protein. Western Blot detection against Immunogen (36.74 KDa) .



PAPSS2 monoclonal antibody (M07), clone 2A8 Western Blot analysis of PAPSS2 expression in A-431 ( Cat # AT3179a )



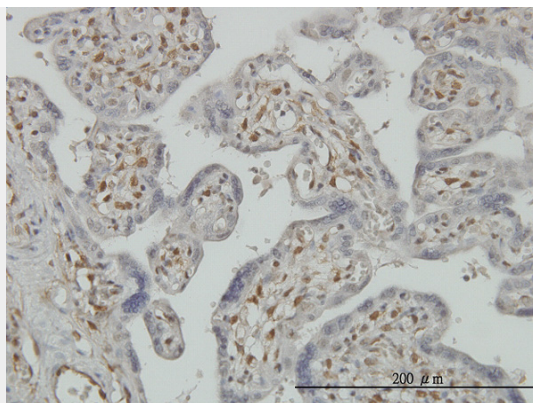
PAPSS2 monoclonal antibody (M07), clone 2A8. Western Blot analysis of PAPSS2 expression in NIH/3T3 ( Cat # AT3179a )



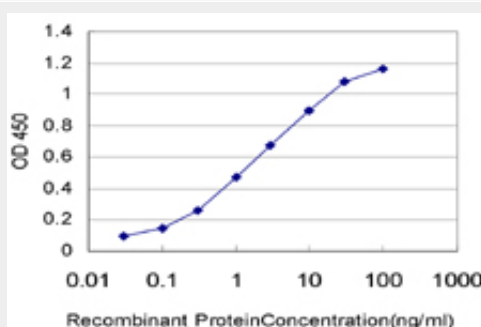
Western Blot analysis of PAPSS2 expression in transfected 293T cell line by PAPSS2 monoclonal antibody (M07), clone 2A8.

Lane 1: PAPSS2 transfected lysate(69.5 KDa).

Lane 2: Non-transfected lysate.



Immunoperoxidase of monoclonal antibody to PAPSS2 on formalin-fixed paraffin-embedded human placenta. [antibody concentration 3 ug/ml]



Detection limit for recombinant GST tagged PAPSS2 is approximately 0.03ng/ml as a capture antibody.

### **PAPSS2 Antibody (monoclonal) (M07) - Background**

Sulfation is a common modification of endogenous (lipids, proteins, and carbohydrates) and exogenous (xenobiotics and drugs) compounds. In mammals, the sulfate source is 3'-phosphoadenosine 5'-phosphosulfate (PAPS), created from ATP and inorganic sulfate. Two different tissue isoforms encoded by different genes synthesize PAPS. This gene encodes one of the two PAPS synthetases. Defects in this gene cause the Pakistani type of spondyloepimetaphyseal dysplasia. Two alternatively spliced transcript variants that encode different isoforms have been described for this gene.

### **PAPSS2 Antibody (monoclonal) (M07) - References**

1. PAPSS2 Promotes Alkaline Phosphates Activity and Mineralization of Osteoblastic MC3T3-E1 Cells by Crosstalk and Smads Signal Pathways. Wang W, Li F, Wang K, Cheng B, Guo X. PLoS One. 2012;7(8):e43475. Epub 2012 Aug 16.