

**PCDH10 Antibody (monoclonal) (M07)****Mouse monoclonal antibody raised against a partial recombinant PCDH10.****Catalog # AT3212a****Specification**

---

**PCDH10 Antibody (monoclonal) (M07) - Product Information**

Application	WB, E
Primary Accession	<a href="#">Q9P2E7</a>
Other Accession	<a href="#">NM_020815</a>
Reactivity	Human
Host	mouse
Clonality	Monoclonal
Isotype	IgG2b Kappa
Calculated MW	112936

**PCDH10 Antibody (monoclonal) (M07) - Additional Information****Gene ID** 57575**Other Names**

Protocadherin-10, PCDH10, KIAA1400

**Target/Specificity**

PCDH10 (NP\_065866, 18 a.a. ~ 127 a.a) partial recombinant protein with GST tag. MW of the GST tag alone is 26 KDa.

**Dilution**

WB~~1:500~1000

**Format**

Clear, colorless solution in phosphate buffered saline, pH 7.2 .

**Storage**

Store at -20°C or lower. Aliquot to avoid repeated freezing and thawing.

**Precautions**

PCDH10 Antibody (monoclonal) (M07) is for research use only and not for use in diagnostic or therapeutic procedures.

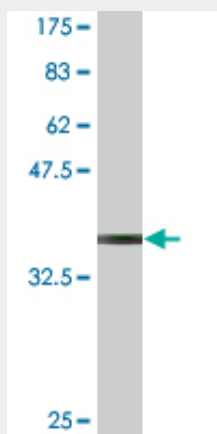
**PCDH10 Antibody (monoclonal) (M07) - Protocols**

Provided below are standard protocols that you may find useful for product applications.

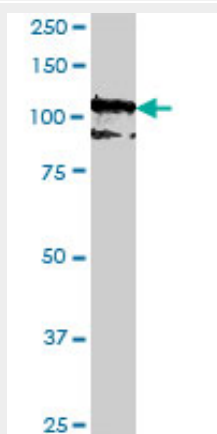
- [Western Blot](#)
- [Blocking Peptides](#)
- [Dot Blot](#)
- [Immunohistochemistry](#)

- [Immunofluorescence](#)
- [Immunoprecipitation](#)
- [Flow Cytometry](#)
- [Cell Culture](#)

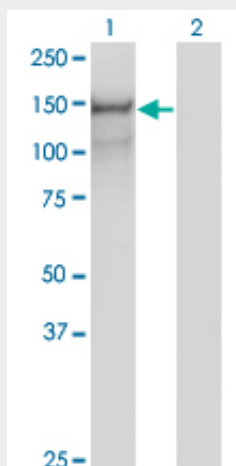
### PCDH10 Antibody (monoclonal) (M07) - Images



Antibody Reactive Against Recombinant Protein. Western Blot detection against Immunogen (37.84 kDa) .

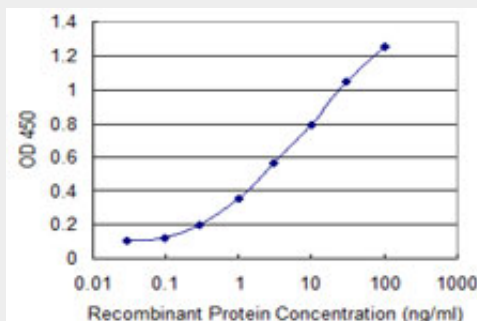


PCDH10 monoclonal antibody (M07), clone 2H6. Western Blot analysis of PCDH10 expression in HepG2 ( (Cat # AT3212a )



Western Blot analysis of PCDH10 expression in transfected 293T cell line by PCDH10 monoclonal antibody (M07), clone 2H6.

Lane 1: PCDH10 transfected lysate(112.9 KDa).  
Lane 2: Non-transfected lysate.



Detection limit for recombinant GST tagged PCDH10 is 0.1 ng/ml as a capture antibody.

### **PCDH10 Antibody (monoclonal) (M07) - Background**

This gene belongs to the protocadherin gene family, a subfamily of the cadherin superfamily. The mRNA encodes a cadherin-related neuronal receptor thought to play a role in the establishment and function of specific cell-cell connections in the brain. This family member contains 6 extracellular cadherin domains, a transmembrane domain and a cytoplasmic tail differing from those of the classical cadherins. Alternatively spliced transcripts encode isoforms with unique cytoplasmic domains.

### **PCDH10 Antibody (monoclonal) (M07) - References**

Personalized smoking cessation: interactions between nicotine dose, dependence and quit-success genotype score. Rose JE, et al. Mol Med, 2010 Jul-Aug. PMID 20379614. High-resolution melting analysis of PCDH10 methylation levels in gastric, colorectal and pancreatic cancers. Yu B, et al. Neoplasia, 2010. PMID 20353276. Field methylation silencing of the protocadherin 10 gene in cervical carcinogenesis as a potential specific diagnostic test from cervical scrapings. Wang KH, et al. Cancer Sci, 2009 Nov. PMID 19709077. Protocadherin PCDH10, involved in tumor progression, is a frequent and early target of promoter hypermethylation in cervical cancer. Narayan G, et al. Genes Chromosomes Cancer, 2009 Nov. PMID 19681120. Pioneers in the ventral telencephalon: The role of OL-protocadherin-dependent striatal axon growth in neural circuit formation. Hirano S. Cell Adh Migr, 2007 Oct. PMID 19262141.