

**PCDH8 Antibody (monoclonal) (M01)****Mouse monoclonal antibody raised against a partial recombinant PCDH8.****Catalog # AT3216a****Specification**

---

**PCDH8 Antibody (monoclonal) (M01) - Product Information**

Application	WB, IHC, E
Primary Accession	<a href="#">O95206</a>
Other Accession	<a href="#">NM_002590</a>
Reactivity	Human
Host	mouse
Clonality	Monoclonal
Isotype	IgG1 Kappa
Calculated MW	113019

**PCDH8 Antibody (monoclonal) (M01) - Additional Information****Gene ID** 5100**Other Names**

Protocadherin-8, Arcadlin, PCDH8

**Target/Specificity**

PCDH8 (NP\_002581, 32 a.a. ~ 120 a.a) partial recombinant protein with GST tag. MW of the GST tag alone is 26 KDa.

**Dilution**

WB~~1:500~1000

**Format**

Clear, colorless solution in phosphate buffered saline, pH 7.2 .

**Storage**

Store at -20°C or lower. Aliquot to avoid repeated freezing and thawing.

**Precautions**

PCDH8 Antibody (monoclonal) (M01) is for research use only and not for use in diagnostic or therapeutic procedures.

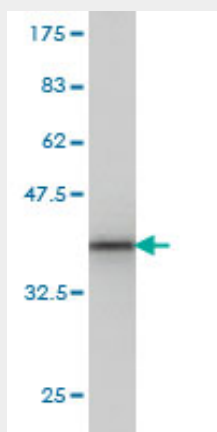
**PCDH8 Antibody (monoclonal) (M01) - Protocols**

Provided below are standard protocols that you may find useful for product applications.

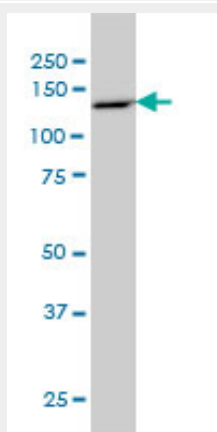
- [Western Blot](#)
- [Blocking Peptides](#)
- [Dot Blot](#)
- [Immunohistochemistry](#)

- [Immunofluorescence](#)
- [Immunoprecipitation](#)
- [Flow Cytometry](#)
- [Cell Culture](#)

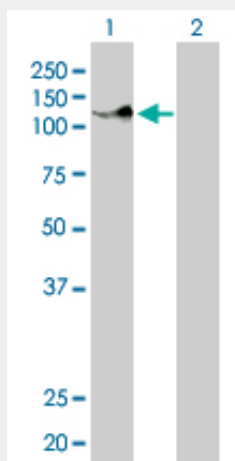
### PCDH8 Antibody (monoclonal) (M01) - Images



Antibody Reactive Against Recombinant Protein. Western Blot detection against Immunogen (35.53 KDa) .

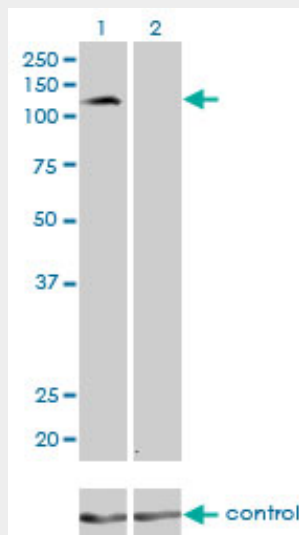


PCDH8 monoclonal antibody (M01), clone 6A8 Western Blot analysis of PCDH8 expression in COLO 320 HSR ( (Cat # AT3216a )

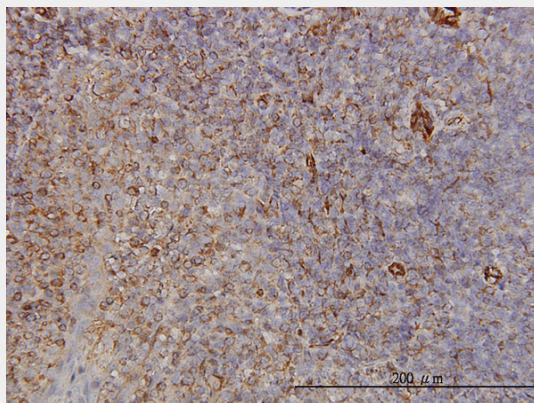


Western Blot analysis of PCDH8 expression in transfected 293T cell line by PCDH8 monoclonal antibody (M01), clone 6A8.

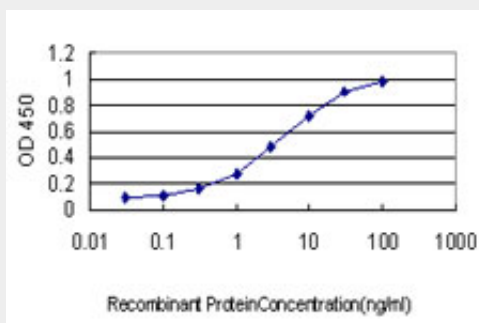
Lane 1: PCDH8 transfected lysate(113 KDa).  
Lane 2: Non-transfected lysate.



Western blot analysis of PCDH8 over-expressed 293 cell line, cotransfected with PCDH8 Validated Chimera RNAi (Cat # AT3216a)



Immunoperoxidase of monoclonal antibody to PCDH8 on formalin-fixed paraffin-embedded human tonsil. [antibody concentration 3 ug/ml]



Detection limit for recombinant GST tagged PCDH8 is approximately 0.1ng/ml as a capture antibody.

#### PCDH8 Antibody (monoclonal) (M01) - Background

This gene belongs to the protocadherin gene family, a subfamily of the cadherin superfamily. The gene encodes an integral membrane protein that is thought to function in cell adhesion in a CNS-specific manner. Unlike classical cadherins, which are generally encoded by 15-17 exons, this gene includes only 3 exons. Notable is the large first exon encoding the extracellular region, including 6 cadherin domains and a transmembrane region. Alternative splicing yields isoforms with unique cytoplasmic tails.

#### **PCDH8 Antibody (monoclonal) (M01) - References**

1. Identification of Cell Surface Targets through Meta-analysis of Microarray Data. Haeberle H, Dudley JT, Liu JT, Butte AJ, Contag CH. *Neoplasia* (2012) 14, 666-679