

**PDCD6 Antibody (monoclonal) (M01)****Mouse monoclonal antibody raised against a partial recombinant PDCD6.****Catalog # AT3246a****Specification**

---

**PDCD6 Antibody (monoclonal) (M01) - Product Information**

Application	IF, WB, E
Primary Accession	<a href="#">O75340</a>
Other Accession	<a href="#">BC012384</a>
Reactivity	Human
Host	mouse
Clonality	Monoclonal
Isotype	IgG2a Kappa
Calculated MW	21868

**PDCD6 Antibody (monoclonal) (M01) - Additional Information****Gene ID** 10016**Other Names**

Programmed cell death protein 6, Apoptosis-linked gene 2 protein, Probable calcium-binding protein ALG-2, PDCD6, ALG2

**Target/Specificity**

PDCD6 (AAH12384, 92 a.a. ~ 191 a.a) partial recombinant protein with GST tag. MW of the GST tag alone is 26 KDa.

**Dilution**

WB~~1:500~1000

**Format**

Clear, colorless solution in phosphate buffered saline, pH 7.2 .

**Storage**

Store at -20°C or lower. Aliquot to avoid repeated freezing and thawing.

**Precautions**

PDCD6 Antibody (monoclonal) (M01) is for research use only and not for use in diagnostic or therapeutic procedures.

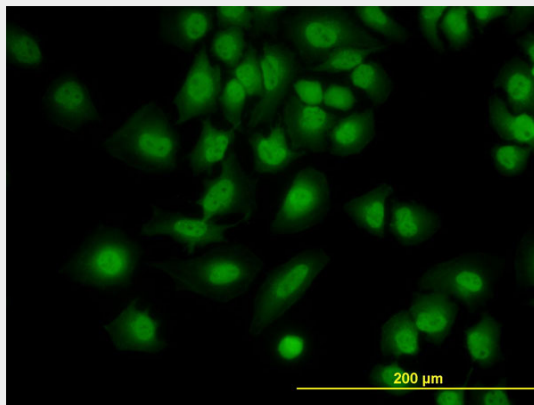
**PDCD6 Antibody (monoclonal) (M01) - Protocols**

Provided below are standard protocols that you may find useful for product applications.

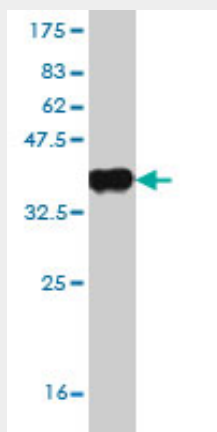
- [Western Blot](#)
- [Blocking Peptides](#)
- [Dot Blot](#)

- [Immunohistochemistry](#)
- [Immunofluorescence](#)
- [Immunoprecipitation](#)
- [Flow Cytometry](#)
- [Cell Culture](#)

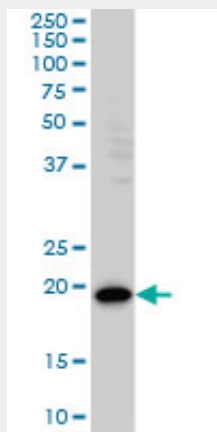
### PDCD6 Antibody (monoclonal) (M01) - Images



Immunofluorescence of monoclonal antibody to PDCD6 on HeLa cell. [antibody concentration 10 ug/ml]

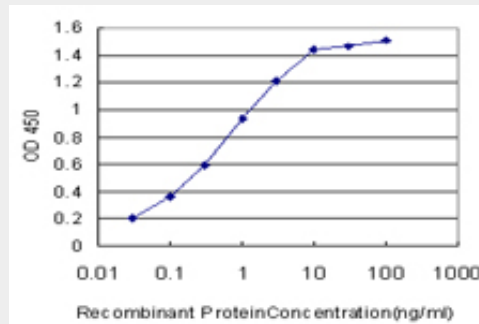


Antibody Reactive Against Recombinant Protein. Western Blot detection against Immunogen (36.63 KDa) .



PDCD6 monoclonal antibody (M01), clone 2B4 Western Blot analysis of PDCD6 expression in HeLa

( (Cat # AT3246a )



Detection limit for recombinant GST tagged PDCD6 is approximately 0.03ng/ml as a capture antibody.

### **PDCD6 Antibody (monoclonal) (M01) - Background**

This gene encodes a calcium-binding protein belonging to the penta-EF-hand protein family. Calcium binding is important for homodimerization and for conformational changes required for binding to other protein partners. This gene product participates in T cell receptor-, Fas-, and glucocorticoid-induced programmed cell death. In mice deficient for this gene product, however, apoptosis was not blocked suggesting this gene product is functionally redundant.

### **PDCD6 Antibody (monoclonal) (M01) - References**

Identification of the penta-EF-hand protein ALG-2 as a  $\text{Ca}^{2+}$ -dependent interactor of mucolipin-1. Vergarajauregui S, et al. J Biol Chem, 2009 Dec 25. PMID 19864416. Penta-EF-hand protein ALG-2 functions as a  $\text{Ca}^{2+}$ -dependent adaptor that bridges Alix and TSG101. Okumura M, et al. Biochem Biophys Res Commun, 2009 Aug 14. PMID 19520058. Crystallization and X-ray diffraction analysis of N-terminally truncated human ALG-2. Suzuki H, et al. Acta Crystallogr Sect F Struct Biol Cryst Commun, 2008 Nov 1. PMID 18997320. Identification of prognostic biomarkers in gastric cancer using endoscopic biopsy samples. Yamada Y, et al. Cancer Sci, 2008 Nov. PMID 18957060. Structural basis for  $\text{Ca}^{2+}$ -dependent formation of ALG-2/Alix peptide complex:  $\text{Ca}^{2+}$ /EF3-driven arginine switch mechanism. Suzuki H, et al. Structure, 2008 Oct 8. PMID 18940611.