

**PHC1 Antibody (monoclonal) (M05)****Mouse monoclonal antibody raised against a partial recombinant PHC1.****Catalog # AT3293a****Specification**

---

**PHC1 Antibody (monoclonal) (M05) - Product Information**

Application	WB, E
Primary Accession	<a href="#">P78364</a>
Other Accession	<a href="#">NM_004426</a>
Reactivity	Human
Host	mouse
Clonality	Monoclonal
Isotype	IgG2b Kappa
Calculated MW	105534

**PHC1 Antibody (monoclonal) (M05) - Additional Information****Gene ID** 1911**Other Names**

Polyhomeotic-like protein 1, hPH1, Early development regulatory protein 1, PHC1, EDR1, PH1

**Target/Specificity**

PHC1 (NP\_004417, 751 a.a. ~ 851 a.a) partial recombinant protein with GST tag. MW of the GST tag alone is 26 KDa.

**Dilution**

WB~~1:500~1000

**Format**

Clear, colorless solution in phosphate buffered saline, pH 7.2 .

**Storage**

Store at -20°C or lower. Aliquot to avoid repeated freezing and thawing.

**Precautions**

PHC1 Antibody (monoclonal) (M05) is for research use only and not for use in diagnostic or therapeutic procedures.

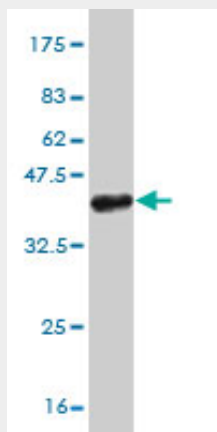
**PHC1 Antibody (monoclonal) (M05) - Protocols**

Provided below are standard protocols that you may find useful for product applications.

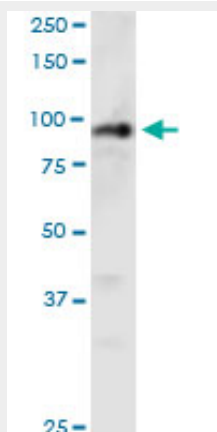
- [Western Blot](#)
- [Blocking Peptides](#)
- [Dot Blot](#)
- [Immunohistochemistry](#)

- [Immunofluorescence](#)
- [Immunoprecipitation](#)
- [Flow Cytometry](#)
- [Cell Culture](#)

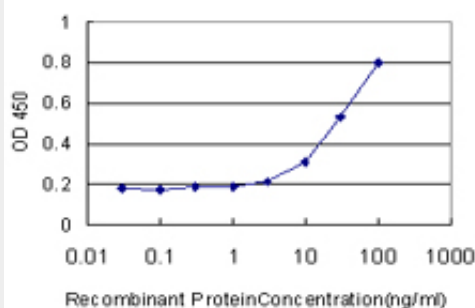
### PHC1 Antibody (monoclonal) (M05) - Images



Antibody Reactive Against Recombinant Protein. Western Blot detection against Immunogen (37.11 KDa) .



PHC1 monoclonal antibody (M05), clone 3G1. Western Blot analysis of PHC1 expression in MCF-7.



Detection limit for recombinant GST tagged PHC1 is approximately 3ng/ml as a capture antibody.

### PHC1 Antibody (monoclonal) (M05) - Background

This gene is a homolog of the Drosophila polyhomeotic gene, which is a member of the Polycomb group of genes. The gene product is a component of a multimeric protein complex that contains

EDR2 and the vertebrate Polycomb protein BMH1. The gene product, the EDR2 protein, and the Drosophila polyhomeotic protein share 2 highly conserved domains, named homology domains I and II. These domains are involved in protein-protein interactions and may mediate heterodimerization of the protein encoded by this gene and the EDR2 protein.

#### **PHC1 Antibody (monoclonal) (M05) - References**

Polycomb-group complex 1 acts as an E3 ubiquitin ligase for Geminin to sustain hematopoietic stem cell activity. Ohtsubo M, et al. Proc Natl Acad Sci U S A, 2008 Jul 29. PMID 18650381. Toward a confocal subcellular atlas of the human proteome. Barbe L, et al. Mol Cell Proteomics, 2008 Mar. PMID 18029348. Towards a proteome-scale map of the human protein-protein interaction network. Rual JF, et al. Nature, 2005 Oct 20. PMID 16189514. A human protein-protein interaction network: a resource for annotating the proteome. Stelzl U, et al. Cell, 2005 Sep 23. PMID 16169070. MAPKAP kinase 3pK phosphorylates and regulates chromatin association of the polycomb group protein Bmi1. Voncken JW, et al. J Biol Chem, 2005 Feb 18. PMID 15563468.