

PIGS Antibody (monoclonal) (M02)**Mouse monoclonal antibody raised against a partial recombinant PIGS.****Catalog # AT3308a****Specification**

PIGS Antibody (monoclonal) (M02) - Product Information

Application	WB, E
Primary Accession	O96S52
Other Accession	NM_033198
Reactivity	Human, Mouse
Host	mouse
Clonality	Monoclonal
Isotype	IgG2b Kappa
Calculated MW	61656

PIGS Antibody (monoclonal) (M02) - Additional Information**Gene ID** 94005**Other Names**

GPI transamidase component PIG-S, Phosphatidylinositol-glycan biosynthesis class S protein, PIGS

Target/Specificity

PIGS (NP_149975.1, 450 a.a. ~ 518 a.a) partial recombinant protein with GST tag. MW of the GST tag alone is 26 KDa.

Dilution

WB~~1:500~1000

Format

Clear, colorless solution in phosphate buffered saline, pH 7.2 .

Storage

Store at -20°C or lower. Aliquot to avoid repeated freezing and thawing.

Precautions

PIGS Antibody (monoclonal) (M02) is for research use only and not for use in diagnostic or therapeutic procedures.

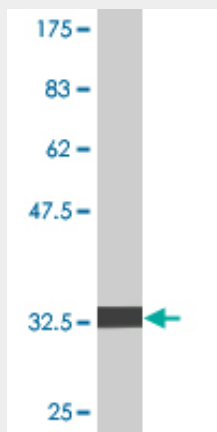
PIGS Antibody (monoclonal) (M02) - Protocols

Provided below are standard protocols that you may find useful for product applications.

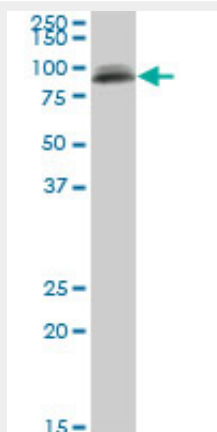
- [Western Blot](#)
- [Blocking Peptides](#)
- [Dot Blot](#)
- [Immunohistochemistry](#)

- [Immunofluorescence](#)
- [Immunoprecipitation](#)
- [Flow Cytometry](#)
- [Cell Culture](#)

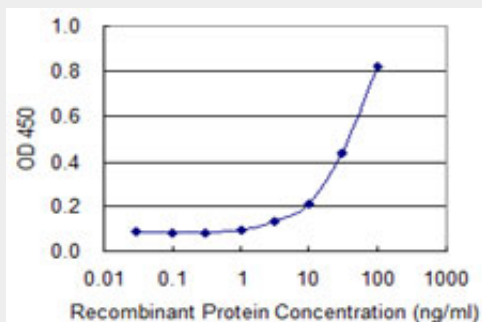
PIGS Antibody (monoclonal) (M02) - Images



Antibody Reactive Against Recombinant Protein. Western Blot detection against Immunogen (33.33 KDa) .



PIGS monoclonal antibody (M02), clone 3F3. Western Blot analysis of PIGS expression in NIH/3T3 (Cat # AT3308a)



Detection limit for recombinant GST tagged PIGS is 1 ng/ml as a capture antibody.

PIGS Antibody (monoclonal) (M02) - Background

This gene encodes a protein that is involved in GPI-anchor biosynthesis. The

glycosylphosphatidylinositol (GPI) anchor is a glycolipid found on many blood cells and serves to anchor proteins to the cell surface. This gene encodes an essential component of the multisubunit enzyme, GPI transamidase. GPI transamidase mediates GPI anchoring in the endoplasmic reticulum, by catalyzing the transfer of fully assembled GPI units to proteins.

PIGS Antibody (monoclonal) (M02) - References

Diversification of transcriptional modulation: large-scale identification and characterization of putative alternative promoters of human genes. Kimura K, et al. *Genome Res*, 2006 Jan. PMID 16344560. Signal sequence and keyword trap in silico for selection of full-length human cDNAs encoding secretion or membrane proteins from oligo-capped cDNA libraries. Otsuki T, et al. *DNA Res*, 2005. PMID 16303743. Endoplasmic reticulum localization of Gaa1 and PIG-T, subunits of the glycosylphosphatidylinositol transamidase complex. Vainauskas S, et al. *J Biol Chem*, 2005 Apr 22. PMID 15713669. The status, quality, and expansion of the NIH full-length cDNA project: the Mammalian Gene Collection (MGC). Gerhard DS, et al. *Genome Res*, 2004 Oct. PMID 15489334. Complete sequencing and characterization of 21,243 full-length human cDNAs. Ota T, et al. *Nat Genet*, 2004 Jan. PMID 14702039.