

**PLA2G4B Antibody (monoclonal) (M01)****Mouse monoclonal antibody raised against a full length recombinant PLA2G4B.****Catalog # AT3331a****Specification**

---

**PLA2G4B Antibody (monoclonal) (M01) - Product Information**

Application	WB, E
Primary Accession	<a href="#">P0C870</a>
Other Accession	<a href="#">BC025290</a>
Reactivity	Human
Host	mouse
Clonality	Monoclonal
Isotype	IgG2a Kappa
Calculated MW	35932

**PLA2G4B Antibody (monoclonal) (M01) - Additional Information****Gene ID** 100137047**Other Names**

JmjC domain-containing protein 7, Jumonji domain-containing protein 7, JMJD7

**Target/Specificity**

PLA2G4B (AAH25290.1, 1 a.a. ~ 316 a.a) full-length recombinant protein with GST tag. MW of the GST tag alone is 26 KDa.

**Dilution**

WB~~1:500~1000

**Format**

Clear, colorless solution in phosphate buffered saline, pH 7.2 .

**Storage**

Store at -20°C or lower. Aliquot to avoid repeated freezing and thawing.

**Precautions**

PLA2G4B Antibody (monoclonal) (M01) is for research use only and not for use in diagnostic or therapeutic procedures.

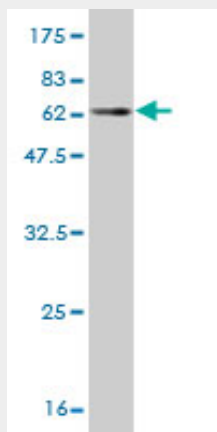
**PLA2G4B Antibody (monoclonal) (M01) - Protocols**

Provided below are standard protocols that you may find useful for product applications.

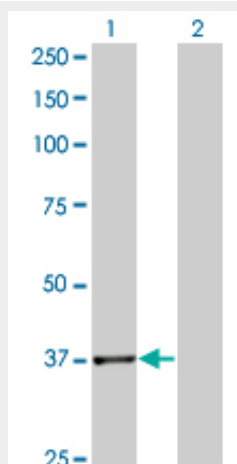
- [Western Blot](#)
- [Blocking Peptides](#)
- [Dot Blot](#)
- [Immunohistochemistry](#)

- [Immunofluorescence](#)
- [Immunoprecipitation](#)
- [Flow Cytometry](#)
- [Cell Culture](#)

### PLA2G4B Antibody (monoclonal) (M01) - Images



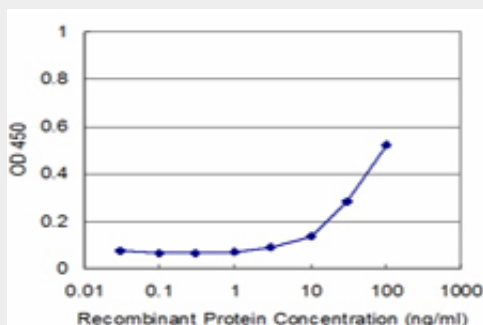
Antibody Reactive Against Recombinant Protein. Western Blot detection against Immunogen (60.5 KDa) .



Western Blot analysis of PLA2G4B expression in transfected 293T cell line by PLA2G4B monoclonal antibody (M01), clone 1G5.

Lane 1: PLA2G4B transfected lysate(114.121 KDa).

Lane 2: Non-transfected lysate.



Detection limit for recombinant GST tagged PLA2G4B is approximately 3ng/ml as a capture antibody.

#### **PLA2G4B Antibody (monoclonal) (M01) - Background**

This gene encodes a highly conserved protein with a JmjC domain, which are part of the cupin metalloenzyme superfamily. JmjC proteins may function as 2-oxoglutarate-Fe(II)-dependent dioxygenases. Most tissues also express read-through transcripts from this gene into the downstream phospholipase A2, group IVB (cytosolic) gene, some of which may encode fusion proteins combining the N-terminus of this protein with the phospholipase A2, group IVB protein.

#### **PLA2G4B Antibody (monoclonal) (M01) - References**

Variation at the NFATC2 Locus Increases the Risk of Thiazolinedione-Induced Edema in the Diabetes REduction Assessment with ramipril and rosiglitazone Medication (DREAM) Study. Bailey SD, et al. Diabetes Care, 2010 Jul 13. PMID 20628086. Gene-centric association signals for lipids and apolipoproteins identified via the HumanCVD BeadChip. Talmud PJ, et al. Am J Hum Genet, 2009 Nov. PMID 19913121. Identification of the expressed form of human cytosolic phospholipase A2beta (cPLA2beta): cPLA2beta3 is a novel variant localized to mitochondria and early endosomes. Ghosh M, et al. J Biol Chem, 2006 Jun 16. PMID 16617059. Diversification of transcriptional modulation: large-scale identification and characterization of putative alternative promoters of human genes. Kimura K, et al. Genome Res, 2006 Jan. PMID 16344560. Methylation: lost in hydroxylation? Trewick SC, et al. EMBO Rep, 2005 Apr. PMID 15809658.