

PPIE Antibody (monoclonal) (M02)**Mouse monoclonal antibody raised against a partial recombinant PPIE.****Catalog # AT3401a****Specification**

PPIE Antibody (monoclonal) (M02) - Product Information

Application	IF, WB, E
Primary Accession	Q9UNP9
Other Accession	NM_006112
Reactivity	Human, Mouse, Rat
Host	Mouse
Clonality	Monoclonal
Isotype	IgG2a Kappa
Calculated MW	33431

PPIE Antibody (monoclonal) (M02) - Additional Information**Gene ID** 10450**Other Names**

Peptidyl-prolyl cis-trans isomerase E, PPlase E, Cyclophilin E, Cyclophilin-33, Rotamase E, PPIE, CYP33

Target/Specificity

PPIE (NP_006103, 2 a.a. ~ 100 a.a) partial recombinant protein with GST tag. MW of the GST tag alone is 26 KDa.

Dilution

WB~~1:500~1000

Format

Clear, colorless solution in phosphate buffered saline, pH 7.2 .

Storage

Store at -20°C or lower. Aliquot to avoid repeated freezing and thawing.

Precautions

PPIE Antibody (monoclonal) (M02) is for research use only and not for use in diagnostic or therapeutic procedures.

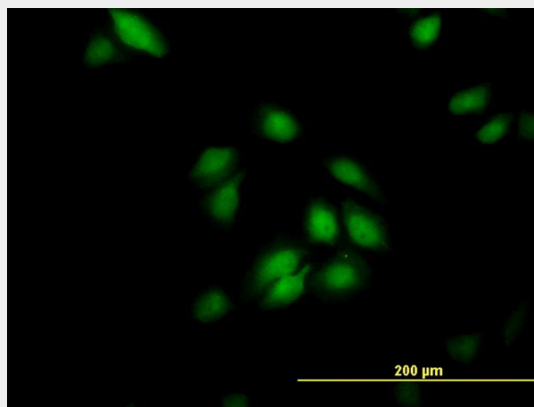
PPIE Antibody (monoclonal) (M02) - Protocols

Provided below are standard protocols that you may find useful for product applications.

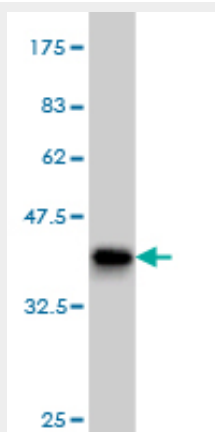
- [Western Blot](#)
- [Blocking Peptides](#)
- [Dot Blot](#)

- [Immunohistochemistry](#)
- [Immunofluorescence](#)
- [Immunoprecipitation](#)
- [Flow Cytometry](#)
- [Cell Culture](#)

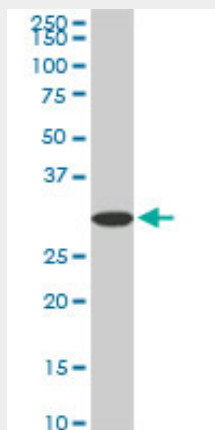
PPIE Antibody (monoclonal) (M02) - Images



Immunofluorescence of monoclonal antibody to PPIE on HeLa cell. [antibody concentration 10 ug/ml]

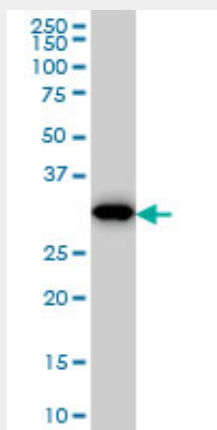


Antibody Reactive Against Recombinant Protein. Western Blot detection against Immunogen (36.63 KDa) .

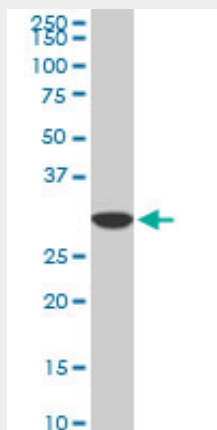


PPIE monoclonal antibody (M02), clone 2F5. Western Blot analysis of PPIE expression in

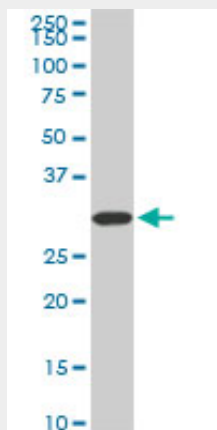
PC-12((Cat # AT3401a)



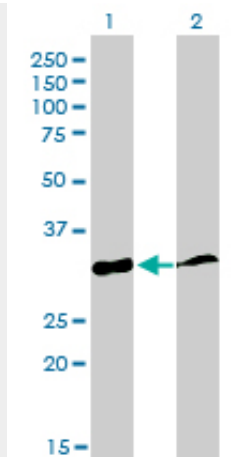
PPIE monoclonal antibody (M02), clone 2F5 Western Blot analysis of PPIE expression in Hela S3 NE ((Cat # AT3401a)



PPIE monoclonal antibody (M02), clone 2F5. Western Blot analysis of PPIE expression in Raw 264.7((Cat # AT3401a)



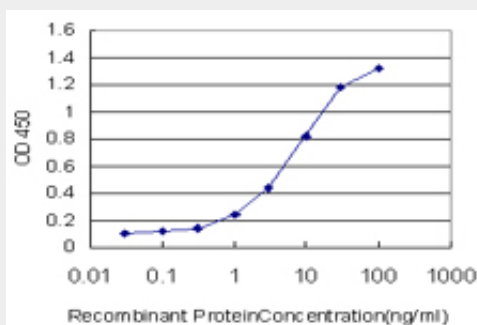
PPIE monoclonal antibody (M02), clone 2F5. Western Blot analysis of PPIE expression in NIH/3T3((Cat # AT3401a)



Western Blot analysis of PPIE expression in transfected 293T cell line by PPIE monoclonal antibody (M02), clone 2F5.

Lane 1: PPIE transfected lysate(33.4 KDa).

Lane 2: Non-transfected lysate.



Detection limit for recombinant GST tagged PPIE is approximately 0.1ng/ml as a capture antibody.

PPIE Antibody (monoclonal) (M02) - Background

The protein encoded by this gene is a member of the peptidyl-prolyl cis-trans isomerase (PPIase) family. PPIases catalyze the cis-trans isomerization of proline imidic peptide bonds in oligopeptides and accelerate the folding of proteins. This protein contains a highly conserved cyclophilin (CYP) domain as well as an RNA-binding domain. It was shown to possess PPIase and protein folding activities, and it also exhibits RNA-binding activity. Alternative splicing results in multiple transcript variants. A related pseudogene, which is also located on chromosome 1, has been identified.

PPIE Antibody (monoclonal) (M02) - References

The PHD3 domain of MLL acts as a CYP33-regulated switch between MLL-mediated activation and repression . Park S, et al. *Biochemistry*, 2010 Aug 10. PMID 20677832. Pro isomerization in MLL1 PHD3-bromo cassette connects H3K4me readout to Cyp33 and HDAC-mediated repression. Wang Z, et al. *Cell*, 2010 Jun 25. PMID 20541251. Use of genome-wide expression data to mine the Gray Zone of GWA studies leads to novel candidate obesity genes. Naukkarinen J, et al. *PLoS Genet*, 2010 Jun 3. PMID 20532202. Molecular mechanism of MLL PHD3 and RNA recognition by the Cyp33 RRM domain. Hom RA, et al. *J Mol Biol*, 2010 Jul 9. PMID 20460131. Loss of MLL PHD finger 3 is necessary for MLL-ENL-induced hematopoietic stem cell immortalization. Chen J, et al. *Cancer Res*, 2008 Aug 1. PMID 18676843.