

**PPP3R1 Antibody (monoclonal) (M01)****Mouse monoclonal antibody raised against a full length recombinant PPP3R1.****Catalog # AT3414a****Specification**

---

**PPP3R1 Antibody (monoclonal) (M01) - Product Information**

Application	IF, WB, E
Primary Accession	<a href="#">P63098</a>
Other Accession	<a href="#">BC027913</a>
Reactivity	Human, Rat
Host	mouse
Clonality	Monoclonal
Isotype	IgG1 Kappa
Calculated MW	19300

**PPP3R1 Antibody (monoclonal) (M01) - Additional Information****Gene ID** 5534**Other Names**

Calcineurin subunit B type 1, Protein phosphatase 2B regulatory subunit 1, Protein phosphatase 3 regulatory subunit B alpha isoform 1, PPP3R1, CNA2, CNB

**Target/Specificity**

PPP3R1 (AAH27913, 1 a.a. ~ 170 a.a) full-length recombinant protein with GST tag. MW of the GST tag alone is 26 KDa.

**Dilution**

WB~~1:500~1000

**Format**

Clear, colorless solution in phosphate buffered saline, pH 7.2 .

**Storage**

Store at -20°C or lower. Aliquot to avoid repeated freezing and thawing.

**Precautions**

PPP3R1 Antibody (monoclonal) (M01) is for research use only and not for use in diagnostic or therapeutic procedures.

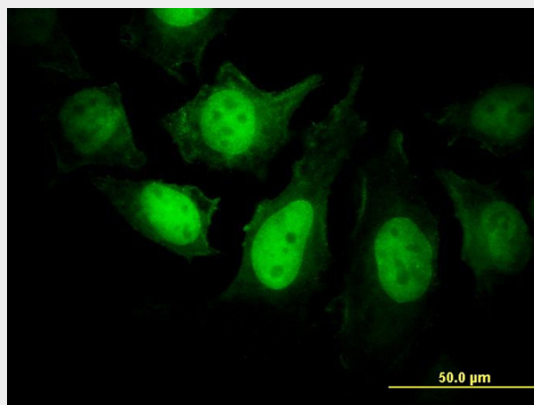
**PPP3R1 Antibody (monoclonal) (M01) - Protocols**

Provided below are standard protocols that you may find useful for product applications.

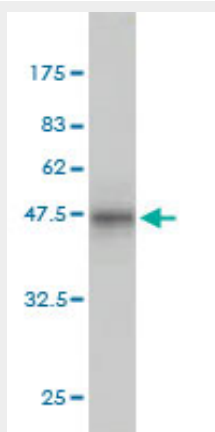
- [Western Blot](#)
- [Blocking Peptides](#)
- [Dot Blot](#)

- [Immunohistochemistry](#)
- [Immunofluorescence](#)
- [Immunoprecipitation](#)
- [Flow Cytometry](#)
- [Cell Culture](#)

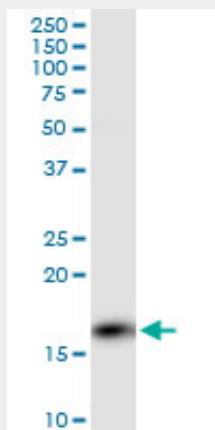
### PPP3R1 Antibody (monoclonal) (M01) - Images



Immunofluorescence of monoclonal antibody to PPP3R1 on HeLa cell. [antibody concentration 25 ug/ml]

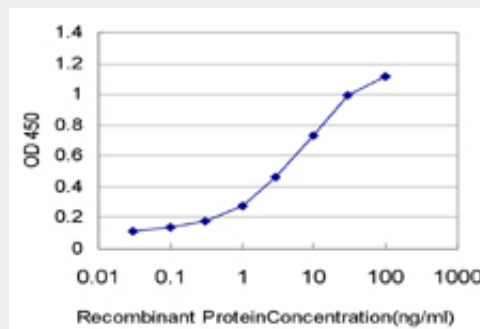


Antibody Reactive Against Recombinant Protein. Western Blot detection against Immunogen (44.44 KDa) .



PPP3R1 monoclonal antibody (M01), clone 4E1. Western Blot analysis of PPP3R1 expression in rat

brain.



Detection limit for recombinant GST tagged PPP3R1 is approximately 0.1ng/ml as a capture antibody.

### PPP3R1 Antibody (monoclonal) (M01) - References

Variation at the NFATC2 Locus Increases the Risk of Thiazolidinedione-Induced Edema in the Diabetes REduction Assessment with ramipril and rosiglitazone Medication (DREAM) Study. Bailey SD, et al. Diabetes Care, 2010 Jul 13. PMID 20628086. Polymorphisms in the calcineurin genes are associated with the training responsiveness of cardiac phenotypes in Chinese young adults. He ZH, et al. Eur J Appl Physiol, 2010 Jul 1. PMID 20593291. New genetic associations detected in a host response study to hepatitis B vaccine. Davila S, et al. Genes Immun, 2010 Apr. PMID 20237496. Are calcineurin genes associated with endurance phenotype traits? He ZH, et al. Eur J Appl Physiol, 2010 Jun. PMID 20107831. Gene-centric association signals for lipids and apolipoproteins identified via the HumanCVD BeadChip. Talmud PJ, et al. Am J Hum Genet, 2009 Nov. PMID 19913121.