

**PSCD1 Antibody (monoclonal) (M01)****Mouse monoclonal antibody raised against a full length recombinant PSCD1.****Catalog # AT3449a****Specification**

---

**PSCD1 Antibody (monoclonal) (M01) - Product Information**

Application	IF, WB, IHC, E
Primary Accession	<a href="#">Q15438</a>
Other Accession	<a href="#">BC050452</a>
Reactivity	Human
Host	mouse
Clonality	Monoclonal
Isotype	IgG1 kappa
Calculated MW	46413

**PSCD1 Antibody (monoclonal) (M01) - Additional Information****Gene ID** 9267**Other Names**

Cytohesin-1, PH, SEC7 and coiled-coil domain-containing protein 1, SEC7 homolog B2-1, CYTH1, D17S811E, PSCD1

**Target/Specificity**

PSCD1 (AAH50452, 1 a.a. ~ 398 a.a) full-length recombinant protein with GST tag. MW of the GST tag alone is 26 KDa.

**Dilution**

WB~~1:500~1000

**Format**

Clear, colorless solution in phosphate buffered saline, pH 7.2 .

**Storage**

Store at -20°C or lower. Aliquot to avoid repeated freezing and thawing.

**Precautions**

PSCD1 Antibody (monoclonal) (M01) is for research use only and not for use in diagnostic or therapeutic procedures.

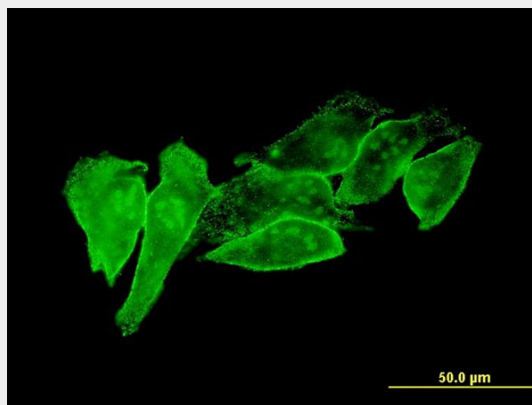
**PSCD1 Antibody (monoclonal) (M01) - Protocols**

Provided below are standard protocols that you may find useful for product applications.

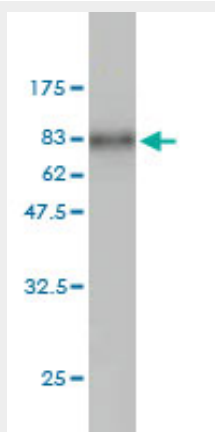
- [Western Blot](#)
- [Blocking Peptides](#)
- [Dot Blot](#)

- [Immunohistochemistry](#)
- [Immunofluorescence](#)
- [Immunoprecipitation](#)
- [Flow Cytometry](#)
- [Cell Culture](#)

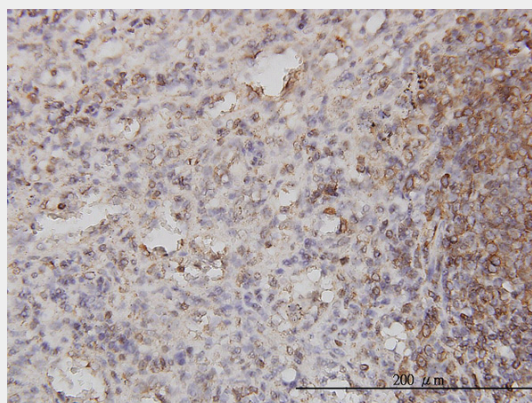
## PSCD1 Antibody (monoclonal) (M01) - Images



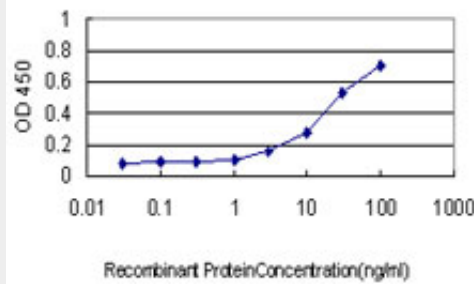
Immunofluorescence of monoclonal antibody to PSCD1 on HeLa cell . [antibody concentration 10 ug/ml]



Antibody Reactive Against Recombinant Protein. Western Blot detection against Immunogen (69.52 KDa) .



Immunoperoxidase of monoclonal antibody to PSCD1 on formalin-fixed paraffin-embedded human spleen. [antibody concentration 3 ug/ml]



Detection limit for recombinant GST tagged PSCD1 is approximately 1ng/ml as a capture antibody.

### **PSCD1 Antibody (monoclonal) (M01) - Background**

The protein encoded by this gene is a member of the PSCD family. Members of this family have identical structural organization that consists of an N-terminal coiled-coil motif, a central Sec7 domain, and a C-terminal pleckstrin homology (PH) domain. The coiled-coil motif is involved in homodimerization, the Sec7 domain contains guanine-nucleotide exchange protein (GEP) activity, and the PH domain interacts with phospholipids and is responsible for association of PSCDs with membranes. Members of this family appear to mediate the regulation of protein sorting and membrane trafficking. This gene is highly expressed in natural killer and peripheral T cells, and regulates the adhesiveness of integrins at the plasma membrane of lymphocytes. The encoded protein is 83% homologous to that of CYTH2.

### **PSCD1 Antibody (monoclonal) (M01) - References**

Cytohesin-1 regulates the Arf6-phospholipase D signaling axis in human neutrophils: impact on superoxide anion production and secretion. El Azreq MA, et al. J Immunol, 2010 Jan 15. PMID 20018626. Cytohesin-1 controls the activation of RhoA and modulates integrin-dependent adhesion and migration of dendritic cells. Quast T, et al. Blood, 2009 Jun 4. PMID 19346499. Cytoskeletal protein radixin activates integrin alpha(M)beta(2) by binding to its cytoplasmic tail. Tang P, et al. FEBS Lett, 2007 Mar 20. PMID 17321526. Cross-talk between CD14 and complement receptor 3 promotes phagocytosis of mycobacteria: regulation by phosphatidylinositol 3-kinase and cytohesin-1. Sendide K, et al. J Immunol, 2005 Apr 1. PMID 15778383. The status, quality, and expansion of the NIH full-length cDNA project: the Mammalian Gene Collection (MGC). Gerhard DS, et al. Genome Res, 2004 Oct. PMID 15489334.