

**PSMA4 Antibody (monoclonal) (M01)****Mouse monoclonal antibody raised against a full length recombinant PSMA4.****Catalog # AT3454a****Specification**

---

**PSMA4 Antibody (monoclonal) (M01) - Product Information**

|                   |                          |
|-------------------|--------------------------|
| Application       | IF, WB, E                |
| Primary Accession | <a href="#">P25789</a>   |
| Other Accession   | <a href="#">BC005361</a> |
| Reactivity        | Human                    |
| Host              | mouse                    |
| Clonality         | Monoclonal               |
| Isotype           | IgG2b kappa              |
| Calculated MW     | 29484                    |

**PSMA4 Antibody (monoclonal) (M01) - Additional Information****Gene ID** 5685**Other Names**

Proteasome subunit alpha type-4, Macropain subunit C9, Multicatalytic endopeptidase complex subunit C9, Proteasome component C9, Proteasome subunit L, PSMA4, HC9, PSC9

**Target/Specificity**

PSMA4 (AAH05361, 1 a.a. ~ 261 a.a) full-length recombinant protein with GST tag. MW of the GST tag alone is 26 KDa.

**Dilution**

WB~~1:500~1000

**Format**

Clear, colorless solution in phosphate buffered saline, pH 7.2 .

**Storage**

Store at -20°C or lower. Aliquot to avoid repeated freezing and thawing.

**Precautions**

PSMA4 Antibody (monoclonal) (M01) is for research use only and not for use in diagnostic or therapeutic procedures.

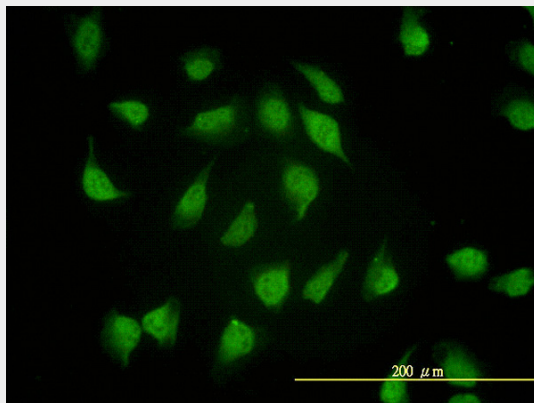
**PSMA4 Antibody (monoclonal) (M01) - Protocols**

Provided below are standard protocols that you may find useful for product applications.

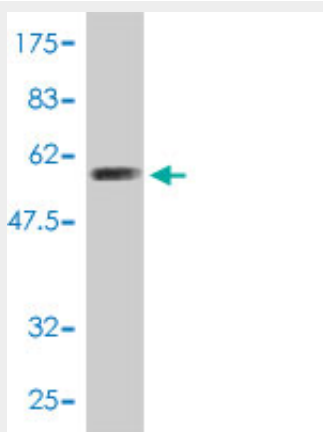
- [Western Blot](#)
- [Blocking Peptides](#)
- [Dot Blot](#)

- [Immunohistochemistry](#)
- [Immunofluorescence](#)
- [Immunoprecipitation](#)
- [Flow Cytometry](#)
- [Cell Culture](#)

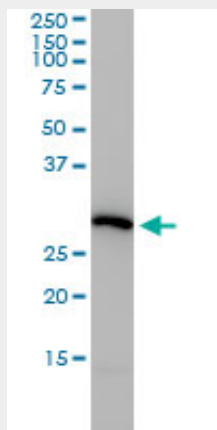
### PSMA4 Antibody (monoclonal) (M01) - Images



Immunofluorescence of monoclonal antibody to PSMA4 on HeLa cell. [antibody concentration 10 ug/ml]

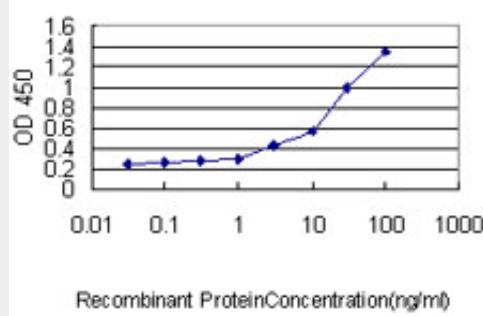


Antibody Reactive Against Recombinant Protein. Western Blot detection against Immunogen (54.45 KDa) .



PSMA4 monoclonal antibody (M01), clone 2A10-E4 Western Blot analysis of PSMA4 expression in

Hela ( (Cat # AT3454a )



Detection limit for recombinant GST tagged PSMA4 is approximately 3ng/ml as a capture antibody.

### PSMA4 Antibody (monoclonal) (M01) - Background

The proteasome is a multicatalytic proteinase complex with a highly ordered ring-shaped 20S core structure. The core structure is composed of 4 rings of 28 non-identical subunits; 2 rings are composed of 7 alpha subunits and 2 rings are composed of 7 beta subunits. Proteasomes are distributed throughout eukaryotic cells at a high concentration and cleave peptides in an ATP/ubiquitin-dependent process in a non-lysosomal pathway. An essential function of a modified proteasome, the immunoproteasome, is the processing of class I MHC peptides. This gene encodes a member of the peptidase T1A family, that is a 20S core alpha subunit. Three alternatively spliced transcript variants encoding different isoforms have been found for this gene.

### PSMA4 Antibody (monoclonal) (M01) - References

Fine mapping of chromosome 15q25.1 lung cancer susceptibility in African-Americans. Hansen HM, et al. Hum Mol Genet, 2010 Sep 15. PMID 20587604. Nicotinic acetylcholine receptor region on chromosome 15q25 and lung cancer risk among African Americans: a case-control study. Amos CI, et al. J Natl Cancer Inst, 2010 Aug 4. PMID 20554942. Association of genetic variants with hemorrhagic stroke in Japanese individuals. Yoshida T, et al. Int J Mol Med, 2010 Apr. PMID 20198315. Assessment of a polymorphism of SDK1 with hypertension in Japanese Individuals. Oguri M, et al. Am J Hypertens, 2010 Jan. PMID 19851296. Defining the human deubiquitinating enzyme interaction landscape. Sowa ME, et al. Cell, 2009 Jul 23. PMID 19615732.