

**PSPH Antibody (monoclonal) (M06)****Mouse monoclonal antibody raised against a partial recombinant PSPH.****Catalog # AT3477a****Specification**

---

**PSPH Antibody (monoclonal) (M06) - Product Information**

Application	WB, E
Primary Accession	<a href="#">P78330</a>
Other Accession	<a href="#">NM_004577</a>
Reactivity	Human
Host	mouse
Clonality	Monoclonal
Isotype	IgG2a Kappa
Calculated MW	25008

**PSPH Antibody (monoclonal) (M06) - Additional Information****Gene ID** 5723**Other Names**

Phosphoserine phosphatase, PSP, PSPase, L-3-phosphoserine phosphatase, O-phosphoserine phosphohydrolase, PSPH

**Target/Specificity**

PSPH (NP\_004568, 1 a.a. ~ 100 a.a) partial recombinant protein with GST tag. MW of the GST tag alone is 26 KDa.

**Dilution**

WB~~1:500~1000

**Format**

Clear, colorless solution in phosphate buffered saline, pH 7.2 .

**Storage**

Store at -20°C or lower. Aliquot to avoid repeated freezing and thawing.

**Precautions**

PSPH Antibody (monoclonal) (M06) is for research use only and not for use in diagnostic or therapeutic procedures.

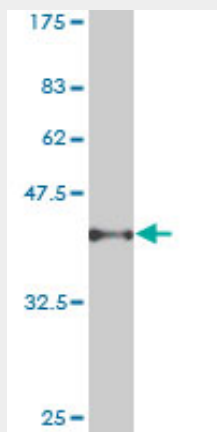
**PSPH Antibody (monoclonal) (M06) - Protocols**

Provided below are standard protocols that you may find useful for product applications.

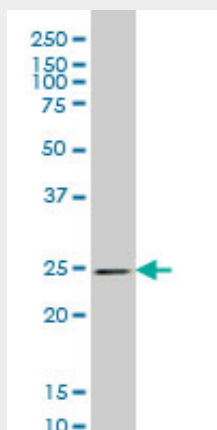
- [Western Blot](#)
- [Blocking Peptides](#)
- [Dot Blot](#)

- [Immunohistochemistry](#)
- [Immunofluorescence](#)
- [Immunoprecipitation](#)
- [Flow Cytometry](#)
- [Cell Culture](#)

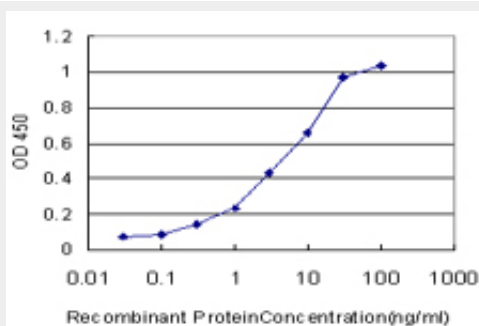
### PSPH Antibody (monoclonal) (M06) - Images



Antibody Reactive Against Recombinant Protein. Western Blot detection against Immunogen (36.74 kDa) .



PSPH monoclonal antibody (M06), clone 3C1 Western Blot analysis of PSPH expression in Hela S3 NE ( (Cat # AT3477a )



Detection limit for recombinant GST tagged PSPH is approximately 0.1ng/ml as a capture antibody.

### PSPH Antibody (monoclonal) (M06) - Background

The protein encoded by this gene belongs to a subfamily of the phosphotransferases. This encoded enzyme is responsible for the third and last step in L-serine formation. It catalyzes magnesium-dependent hydrolysis of L-phosphoserine and is also involved in an exchange reaction between L-serine and L-phosphoserine. Deficiency of this protein is thought to be linked to Williams syndrome.

#### **PSPH Antibody (monoclonal) (M06) - References**

Large-scale mapping of human protein-protein interactions by mass spectrometry. Ewing RM, et al. Mol Syst Biol, 2007. PMID 17353931. The status, quality, and expansion of the NIH full-length cDNA project: the Mammalian Gene Collection (MGC). Gerhard DS, et al. Genome Res, 2004 Oct. PMID 15489334. How calcium inhibits the magnesium-dependent enzyme human phosphoserine phosphatase. Peeraer Y, et al. Eur J Biochem, 2004 Aug. PMID 15291819. Complete sequencing and characterization of 21,243 full-length human cDNAs. Ota T, et al. Nat Genet, 2004 Jan. PMID 14702039. Mutations responsible for 3-phosphoserine phosphatase deficiency. Veiga-da-Cunha M, et al. Eur J Hum Genet, 2004 Feb. PMID 14673469.