

**PTH Antibody (monoclonal) (M19)**  
**Mouse monoclonal antibody raised against a full-length recombinant PTH.**  
**Catalog # AT3486a**

## Specification

---

### PTH Antibody (monoclonal) (M19) - Product Information

|                   |                        |
|-------------------|------------------------|
| Application       | WB                     |
| Primary Accession | <a href="#">P01270</a> |
| Other Accession   | <a href="#">N/A</a>    |
| Reactivity        | Human                  |
| Host              | mouse                  |
| Clonality         | Monoclonal             |
| Isotype           | IgG1 Kappa             |
| Calculated MW     | 12861                  |

### PTH Antibody (monoclonal) (M19) - Additional Information

**Gene ID** 5741

#### Other Names

Parathyroid hormone, PTH, Parathormone, Parathyrin, PTH

#### Target/Specificity

PTH (NP\_000306, 32 a.a.-115 a.a.) full-length recombinant protein.

#### Dilution

WB~~1:500~1000

#### Format

Clear, colorless solution in phosphate buffered saline, pH 7.2 .

#### Storage

Store at -20°C or lower. Aliquot to avoid repeated freezing and thawing.

#### Precautions

PTH Antibody (monoclonal) (M19) is for research use only and not for use in diagnostic or therapeutic procedures.

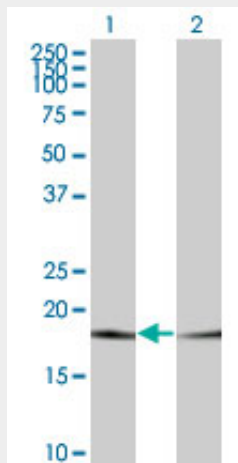
### PTH Antibody (monoclonal) (M19) - Protocols

Provided below are standard protocols that you may find useful for product applications.

- [Western Blot](#)
- [Blocking Peptides](#)
- [Dot Blot](#)
- [Immunohistochemistry](#)
- [Immunofluorescence](#)

- [Immunoprecipitation](#)
- [Flow Cytometry](#)
- [Cell Culture](#)

#### PTH Antibody (monoclonal) (M19) - Images



Western Blot analysis of PTH expression in transfected 293T cell line by PTH monoclonal antibody (M19), clone 3D10.

Lane 1: PTH transfected lysate(12.9 KDa).

Lane 2: Non-transfected lysate.

#### PTH Antibody (monoclonal) (M19) - Background

The protein encoded by this gene is a hormone secreted by parathyroid cells. This hormone elevates blood  $\text{Ca}^{2+}$  level by dissolving the salts in bone and preventing their renal excretion. Defects in this gene are a cause of familial isolated hypoparathyroidism (FIH). [provided by RefSeq]