

**RAD18 Antibody (monoclonal) (M03)****Mouse monoclonal antibody raised against a partial recombinant RAD18.****Catalog # AT3546a****Specification**

---

**RAD18 Antibody (monoclonal) (M03) - Product Information**

Application	IF, WB
Primary Accession	<a href="#">O9NS91</a>
Other Accession	<a href="#">NM_020165</a>
Reactivity	Human, Rat
Host	mouse
Clonality	Monoclonal
Isotype	IgG2b Kappa
Calculated MW	56223

**RAD18 Antibody (monoclonal) (M03) - Additional Information****Gene ID** 56852**Other Names**

E3 ubiquitin-protein ligase RAD18, 632-, Postreplication repair protein RAD18, hHR18, hRAD18, RING finger protein 73, RAD18, RNF73

**Target/Specificity**

RAD18 (NP\_064550, 332 a.a. ~ 430 a.a) partial recombinant protein with GST tag. MW of the GST tag alone is 26 KDa.

**Dilution**

WB~~1:500~1000

**Format**

Clear, colorless solution in phosphate buffered saline, pH 7.2 .

**Storage**

Store at -20°C or lower. Aliquot to avoid repeated freezing and thawing.

**Precautions**

RAD18 Antibody (monoclonal) (M03) is for research use only and not for use in diagnostic or therapeutic procedures.

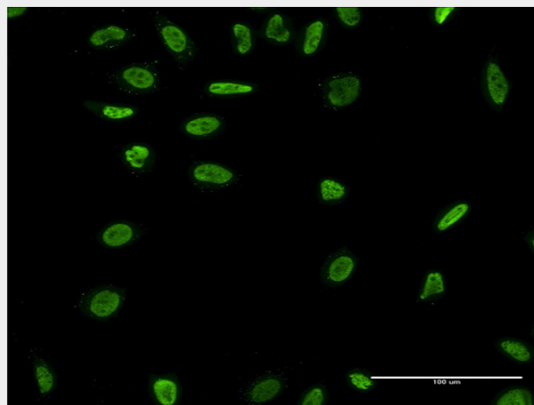
**RAD18 Antibody (monoclonal) (M03) - Protocols**

Provided below are standard protocols that you may find useful for product applications.

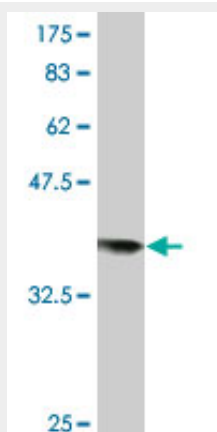
- [Western Blot](#)
- [Blocking Peptides](#)
- [Dot Blot](#)

- [Immunohistochemistry](#)
- [Immunofluorescence](#)
- [Immunoprecipitation](#)
- [Flow Cytometry](#)
- [Cell Culture](#)

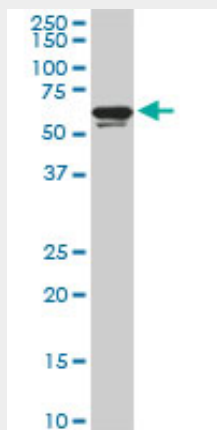
## RAD18 Antibody (monoclonal) (M03) - Images



Immunofluorescence of monoclonal antibody to RAD18 on HeLa cell . [antibody concentration 10 ug/ml]

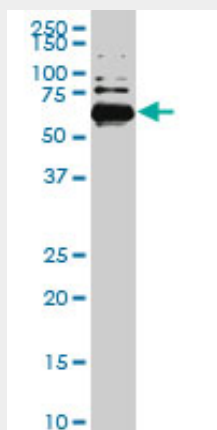


Antibody Reactive Against Recombinant Protein. Western Blot detection against Immunogen (36.63 KDa) .



RAD18 monoclonal antibody (M03), clone 2B9. Western Blot analysis of RAD18 expression in

PC-12 ( (Cat # AT3546a )



RAD18 monoclonal antibody (M03), clone 2B9. Western Blot analysis of RAD18 expression in HeLa S3 NE ( (Cat # AT3546a )

### **RAD18 Antibody (monoclonal) (M03) - Background**

The protein encoded by this gene is highly similar to *S. cerevisiae* DNA damage repair protein Rad18. Yeast Rad18 functions through its interaction with Rad6, which is an ubiquitin-conjugating enzyme required for post-replication repair of damaged DNA. Similar to its yeast counterpart, this protein is able to interact with the human homolog of yeast Rad6 protein through a conserved ring-finger motif. Mutation of this motif results in defective replication of UV-damaged DNA and hypersensitivity to multiple mutagens.

### **RAD18 Antibody (monoclonal) (M03) - References**

A Large-scale genetic association study of esophageal adenocarcinoma risk. Liu CY, et al. *Carcinogenesis*, 2010 Jul. PMID 20453000. RAD18-dependent recruitment of SNM1A to DNA repair complexes by a ubiquitin-binding zinc finger. Yang K, et al. *J Biol Chem*, 2010 Jun 18. PMID 20385554. Multiple genetic variants in telomere pathway genes and breast cancer risk. Shen J, et al. *Cancer Epidemiol Biomarkers Prev*, 2010 Jan. PMID 20056641. Mutation analysis of Rad18 in human cancer cell lines and non small cell lung cancer tissues. Nakamura T, et al. *J Exp Clin Cancer Res*, 2009 Jul 25. PMID 19630985. Physical and functional interaction between WRNIP1 and RAD18. Yoshimura A, et al. *Genes Genet Syst*, 2009 Apr. PMID 19556710.