

**RAP2B Antibody (monoclonal) (M01)**

Mouse monoclonal antibody raised against a full length recombinant RAP2B.

Catalog # AT3564a

**Specification**

---

**RAP2B Antibody (monoclonal) (M01) - Product Information**

Application	IF, WB, IHC
Primary Accession	<a href="#">P61225</a>
Other Accession	<a href="#">BC012362</a>
Reactivity	Human
Host	mouse
Clonality	Monoclonal
Isotype	IgG2b kappa
Calculated MW	20504

**RAP2B Antibody (monoclonal) (M01) - Additional Information**

**Gene ID** 5912

**Other Names**

Ras-related protein Rap-2b, RAP2B

**Target/Specificity**

RAP2B (AAH12362, 1 a.a. ~ 183 a.a) full-length recombinant protein with GST tag. MW of the GST tag alone is 26 KDa.

**Dilution**

WB~~1:500~1000

**Format**

Clear, colorless solution in phosphate buffered saline, pH 7.2 .

**Storage**

Store at -20°C or lower. Aliquot to avoid repeated freezing and thawing.

**Precautions**

RAP2B Antibody (monoclonal) (M01) is for research use only and not for use in diagnostic or therapeutic procedures.

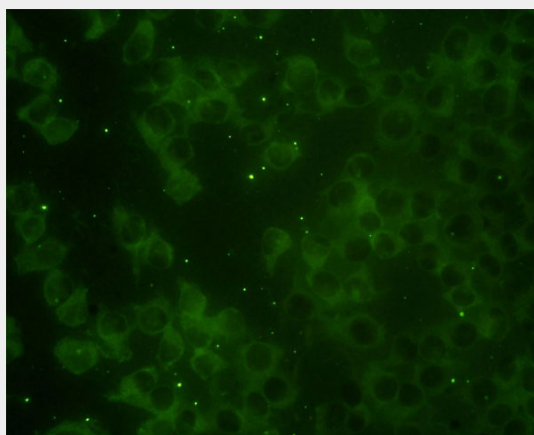
**RAP2B Antibody (monoclonal) (M01) - Protocols**

Provided below are standard protocols that you may find useful for product applications.

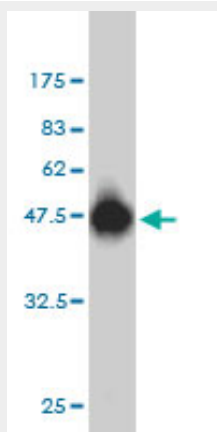
- [Western Blot](#)
- [Blocking Peptides](#)
- [Dot Blot](#)
- [Immunohistochemistry](#)

- [Immunofluorescence](#)
- [Immunoprecipitation](#)
- [Flow Cytometry](#)
- [Cell Culture](#)

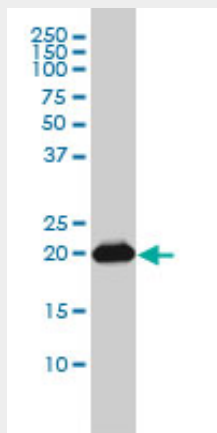
## RAP2B Antibody (monoclonal) (M01) - Images



Immunofluorescence of monoclonal antibody to RAP2B on HeLa cell. [antibody concentration 10 ug/ml]

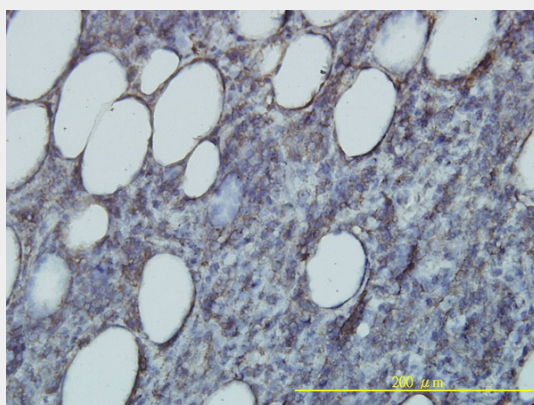


Antibody Reactive Against Recombinant Protein. Western Blot detection against Immunogen (45.87 KDa) .



RAP2B monoclonal antibody (M01), clone 4F12-3C6 Western Blot analysis of RAP2B expression in

A-431 ( (Cat # AT3564a )



Immunoperoxidase of monoclonal antibody to RAP2B on formalin-fixed paraffin-embedded human malignant lymphoma, diffuse large B tissue. [antibody concentration 1 ug/ml]

### **RAP2B Antibody (monoclonal) (M01) - Background**

This intronless gene belongs to a family of RAS-related genes. The proteins encoded by these genes share approximately 50% amino acid identity with the classical RAS proteins and have numerous structural features in common. The most striking difference between the RAP and RAS proteins resides in their 61st amino acid: glutamine in RAS is replaced by threonine in RAP proteins. Evidence suggests that this protein may be polyisoprenylated and palmitoylated.

### **RAP2B Antibody (monoclonal) (M01) - References**

Variation at the NFATC2 Locus Increases the Risk of Thiazolinedione-Induced Edema in the Diabetes REduction Assessment with ramipril and rosiglitazone Medication (DREAM) Study. Bailey SD, et al. Diabetes Care, 2010 Jul 13. PMID 20628086. Proteome analysis of the thalamus and cerebrospinal fluid reveals glycolysis dysfunction and potential biomarkers candidates for schizophrenia. Martins-de-Souza D, et al. J Psychiatr Res, 2010 May 14. PMID 20471030. Gene-centric association signals for lipids and apolipoproteins identified via the HumanCVD BeadChip. Talmud PJ, et al. Am J Hum Genet, 2009 Nov. PMID 19913121. Targeting of the small GTPase Rap2b, but not Rap1b, to lipid rafts is promoted by palmitoylation at Cys176 and Cys177 and is required for efficient protein activation in human platelets. Canobbio I, et al. Cell Signal, 2008 Sep. PMID 18582561. Identification of genes differentially expressed in human primary lung squamous cell carcinoma. Liu Y, et al. Lung Cancer, 2007 Jun. PMID 17316888.