

**REG1A Antibody (monoclonal) (M01)****Mouse monoclonal antibody raised against a partial recombinant REG1A.****Catalog # AT3614a****Specification**

---

**REG1A Antibody (monoclonal) (M01) - Product Information**

Application	<b>E</b>
Primary Accession	<a href="#">P05451</a>
Other Accession	<a href="#">BC005350</a>
Reactivity	<b>Human</b>
Host	<b>mouse</b>
Clonality	<b>Monoclonal</b>
Isotype	<b>IgG2a Kappa</b>
Calculated MW	<b>18731</b>

**REG1A Antibody (monoclonal) (M01) - Additional Information****Gene ID** 5967**Other Names**

Lithostathine-1-alpha, Islet cells regeneration factor, ICRF, Islet of Langerhans regenerating protein, REG, Pancreatic stone protein, PSP, Pancreatic thread protein, PTP, Regenerating islet-derived protein 1-alpha, REG-1-alpha, Regenerating protein I alpha, REG1A, PSPS, PSPS1, REG

**Target/Specificity**

REG1A (AAH05350, 67 a.a. ~ 166 a.a) partial recombinant protein with GST tag. MW of the GST tag alone is 26 KDa.

**Format**

Clear, colorless solution in phosphate buffered saline, pH 7.2 .

**Storage**

Store at -20°C or lower. Aliquot to avoid repeated freezing and thawing.

**Precautions**

REG1A Antibody (monoclonal) (M01) is for research use only and not for use in diagnostic or therapeutic procedures.

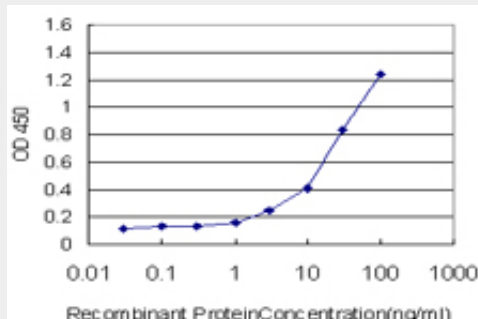
**REG1A Antibody (monoclonal) (M01) - Protocols**

Provided below are standard protocols that you may find useful for product applications.

- [Western Blot](#)
- [Blocking Peptides](#)
- [Dot Blot](#)
- [Immunohistochemistry](#)
- [Immunofluorescence](#)

- [Immunoprecipitation](#)
- [Flow Cytometry](#)
- [Cell Culture](#)

#### **REG1A Antibody (monoclonal) (M01) - Images**



Detection limit for recombinant GST tagged REG1A is approximately 1ng/ml as a capture antibody.

#### **REG1A Antibody (monoclonal) (M01) - Background**

This gene is a type I subclass member of the Reg gene family. The Reg gene family is a multigene family grouped into four subclasses, types I, II, III and IV, based on the primary structures of the encoded proteins. This gene encodes a protein that is secreted by the exocrine pancreas. It is associated with islet cell regeneration and diabetogenesis and may be involved in pancreatic lithogenesis. Reg family members REG1B, REGL, PAP and this gene are tandemly clustered on chromosome 2p12 and may have arisen from the same ancestral gene by gene duplication.

#### **REG1A Antibody (monoclonal) (M01) - References**

Personalized smoking cessation: interactions between nicotine dose, dependence and quit-success genotype score. Rose JE, et al. Mol Med, 2010 Jul-Aug. PMID 20379614. Involvement of the IL-22/REG Ialpha axis in ulcerative colitis. Sekikawa A, et al. Lab Invest, 2010 Mar. PMID 20065946. Regenerating gene I regulates interleukin-6 production in squamous esophageal cancer cells. Usami S, et al. Biochem Biophys Res Commun, 2010 Jan 29. PMID 20056108. Expression profile of REG family proteins REG Ialpha and REG IV in advanced gastric cancer: comparison with mucin phenotype and prognostic markers. Yamagishi H, et al. Mod Pathol, 2009 Jul. PMID 19329938. REG I enhances chemo- and radiosensitivity in squamous cell esophageal cancer cells. Hayashi K, et al. Cancer Sci, 2008 Dec. PMID 19032369.