

**RFC3 Antibody (monoclonal) (M01)****Mouse monoclonal antibody raised against a partial recombinant RFC3.****Catalog # AT3620a****Specification**

---

**RFC3 Antibody (monoclonal) (M01) - Product Information**

Application	IP, WB, E
Primary Accession	<a href="#">P40938</a>
Other Accession	<a href="#">BC000149</a>
Reactivity	Human
Host	mouse
Clonality	Monoclonal
Isotype	IgG2a Kappa
Calculated MW	40556

**RFC3 Antibody (monoclonal) (M01) - Additional Information****Gene ID** 5983**Other Names**

Replication factor C subunit 3, Activator 1 38 kDa subunit, A1 38 kDa subunit, Activator 1 subunit 3, Replication factor C 38 kDa subunit, RF-C 38 kDa subunit, RFC38, RFC3

**Target/Specificity**

RFC3 (AAH00149, 257 a.a. ~ 356 a.a) partial recombinant protein with GST tag. MW of the GST tag alone is 26 kDa.

**Dilution**

WB~~1:500~1000

**Format**

Clear, colorless solution in phosphate buffered saline, pH 7.2 .

**Storage**

Store at -20°C or lower. Aliquot to avoid repeated freezing and thawing.

**Precautions**

RFC3 Antibody (monoclonal) (M01) is for research use only and not for use in diagnostic or therapeutic procedures.

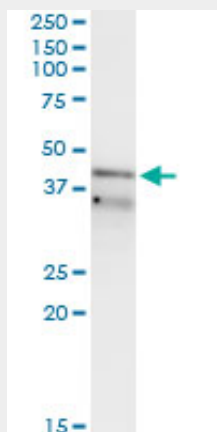
**RFC3 Antibody (monoclonal) (M01) - Protocols**

Provided below are standard protocols that you may find useful for product applications.

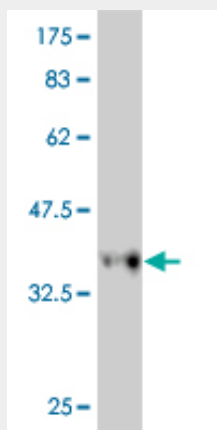
- [Western Blot](#)
- [Blocking Peptides](#)
- [Dot Blot](#)

- [Immunohistochemistry](#)
- [Immunofluorescence](#)
- [Immunoprecipitation](#)
- [Flow Cytometry](#)
- [Cell Culture](#)

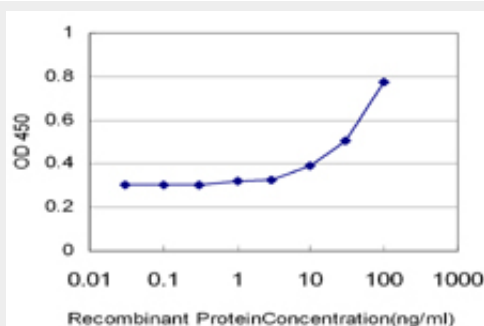
### RFC3 Antibody (monoclonal) (M01) - Images



Immunoprecipitation of RFC3 transfected lysate using anti-RFC3 monoclonal antibody and Protein A Magnetic Bead ([U0007](#)), and immunoblotted with RFC3 monoclonal antibody.



Antibody Reactive Against Recombinant Protein. Western Blot detection against Immunogen (36.63 KDa) .



Detection limit for recombinant GST tagged RFC3 is approximately 10ng/ml as a capture antibody.

### RFC3 Antibody (monoclonal) (M01) - Background

The elongation of primed DNA templates by DNA polymerase delta and DNA polymerase epsilon requires the accessory proteins proliferating cell nuclear antigen (PCNA) and replication factor C (RFC). RFC, also named activator 1, is a protein complex consisting of five distinct subunits of 140, 40, 38, 37, and 36 kDa. This gene encodes the 38 kDa subunit. This subunit is essential for the interaction between the 140 kDa subunit and the core complex that consists of the 36, 37, and 40 kDa subunits. Alternatively spliced transcript variants encoding distinct isoforms have been described.

### **RFC3 Antibody (monoclonal) (M01) - References**

Variation at the NFATC2 Locus Increases the Risk of Thiazolinedione-Induced Edema in the Diabetes REduction Assessment with ramipril and rosiglitazone Medication (DREAM) Study. Bailey SD, et al. Diabetes Care, 2010 Jul 13. PMID 20628086. Polymorphisms in the base excision repair pathway and graft-versus-host disease. Arora M, et al. Leukemia, 2010 Aug. PMID 20574454. Personalized smoking cessation: interactions between nicotine dose, dependence and quit-success genotype score. Rose JE, et al. Mol Med, 2010 Jul-Aug. PMID 20379614. Association between genetic variants in the base excision repair pathway and outcomes after hematopoietic cell transplantations. Thyagarajan B, et al. Biol Blood Marrow Transplant, 2010 Aug. PMID 20226869. Gene-centric association signals for lipids and apolipoproteins identified via the HumanCVD BeadChip. Talmud PJ, et al. Am J Hum Genet, 2009 Nov. PMID 19913121.