

RFP2 Antibody (monoclonal) (M01)**Mouse monoclonal antibody raised against a partial recombinant RFP2.****Catalog # AT3624a****Specification**

RFP2 Antibody (monoclonal) (M01) - Product Information

| | |
|-------------------|---------------------------|
| Application | E |
| Primary Accession | Q8N5I3 |
| Other Accession | NM_005798 |
| Reactivity | Human |
| Host | mouse |
| Clonality | Monoclonal |
| Isotype | IgG2a lambda |
| Calculated MW | 31048 |

RFP2 Antibody (monoclonal) (M01) - Additional Information**Gene ID** 283518**Other Names**

Potassium channel regulatory protein, Potassium channel regulator, Protein CLLD4, KCNRG, CLLD4

Target/Specificity

RFP2 (NP_005789, 1 a.a. ~ 100 a.a) partial recombinant protein with GST tag. MW of the GST tag alone is 26 KDa.

Format

Clear, colorless solution in phosphate buffered saline, pH 7.2 .

Storage

Store at -20°C or lower. Aliquot to avoid repeated freezing and thawing.

Precautions

RFP2 Antibody (monoclonal) (M01) is for research use only and not for use in diagnostic or therapeutic procedures.

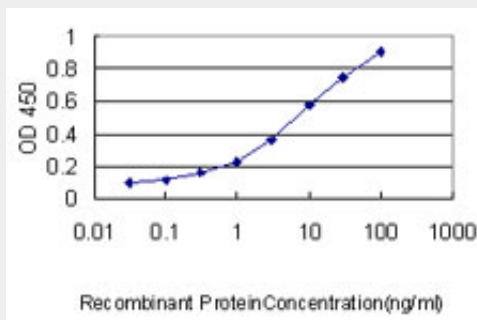
RFP2 Antibody (monoclonal) (M01) - Protocols

Provided below are standard protocols that you may find useful for product applications.

- [Western Blot](#)
- [Blocking Peptides](#)
- [Dot Blot](#)
- [Immunohistochemistry](#)
- [Immunofluorescence](#)
- [Immunoprecipitation](#)
- [Flow Cytometry](#)

- [Cell Culture](#)

RFP2 Antibody (monoclonal) (M01) - Images



Detection limit for recombinant GST tagged RFP2 is approximately 0.1ng/ml as a capture antibody.

RFP2 Antibody (monoclonal) (M01) - Background

This gene encodes a member of the tripartite motif (TRIM) family. The TRIM motif includes three zinc-binding domains, a RING, a B-box type 1 and a B-box type 2, and a coiled-coil region. This gene is located on chromosome 13 within the minimal deletion region for B-cell chronic lymphocytic leukemia. Multiple alternatively spliced transcript variants have been found for this gene.

RFP2 Antibody (monoclonal) (M01) - References

Toward a confocal subcellular atlas of the human proteome. Barbe L, et al. Mol Cell Proteomics, 2008 Mar. PMID 18029348. The RBCC gene RFP2 (Leu5) encodes a novel transmembrane E3 ubiquitin ligase involved in ERAD. Lerner M, et al. Mol Biol Cell, 2007 May. PMID 17314412. Human RFP2 gene promoter: unique structure and unusual strength. Skoblov M, et al. Biochem Biophys Res Commun, 2006 Apr 14. PMID 16499869. The status, quality, and expansion of the NIH full-length cDNA project: the Mammalian Gene Collection (MGC). Gerhard DS, et al. Genome Res, 2004 Oct. PMID 15489334. DLEU2 encodes an antisense RNA for the putative bicistronic RFP2/LEU5 gene in humans and mouse. Corcoran MM, et al. Genes Chromosomes Cancer, 2004 Aug. PMID 15188451.