

RGS2 Antibody (monoclonal) (M01)**Mouse monoclonal antibody raised against a partial recombinant RGS2.****Catalog # AT3628a****Specification**

RGS2 Antibody (monoclonal) (M01) - Product Information

Application	WB, IHC, E
Primary Accession	P41220
Other Accession	BC007049
Reactivity	Human
Host	mouse
Clonality	Monoclonal
Isotype	IgG2a Kappa
Calculated MW	24382

RGS2 Antibody (monoclonal) (M01) - Additional Information**Gene ID** 5997**Other Names**

Regulator of G-protein signaling 2, RGS2, Cell growth-inhibiting gene 31 protein, G0/G1 switch regulatory protein 8, RGS2, GOS8

Target/Specificity

RGS2 (AAH07049, 111 a.a. ~ 211 a.a) partial recombinant protein with GST tag. MW of the GST tag alone is 26 KDa.

Dilution

WB~~1:500~1000

Format

Clear, colorless solution in phosphate buffered saline, pH 7.2 .

Storage

Store at -20°C or lower. Aliquot to avoid repeated freezing and thawing.

Precautions

RGS2 Antibody (monoclonal) (M01) is for research use only and not for use in diagnostic or therapeutic procedures.

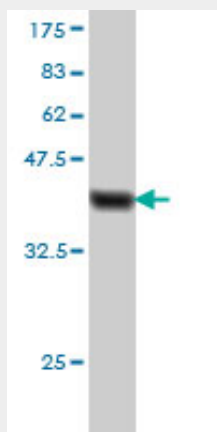
RGS2 Antibody (monoclonal) (M01) - Protocols

Provided below are standard protocols that you may find useful for product applications.

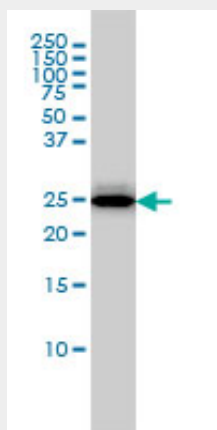
- [Western Blot](#)
- [Blocking Peptides](#)
- [Dot Blot](#)

- [Immunohistochemistry](#)
- [Immunofluorescence](#)
- [Immunoprecipitation](#)
- [Flow Cytometry](#)
- [Cell Culture](#)

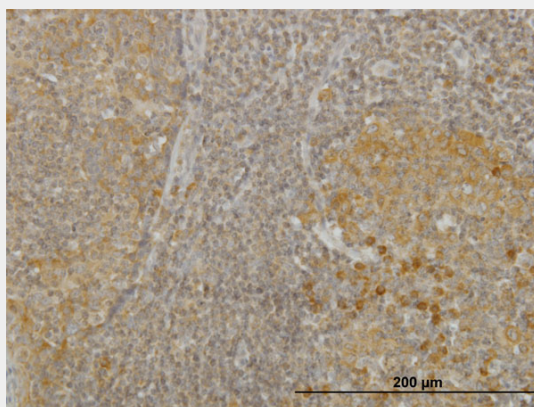
RGS2 Antibody (monoclonal) (M01) - Images



Antibody Reactive Against Recombinant Protein. Western Blot detection against Immunogen (36.74 kDa) .

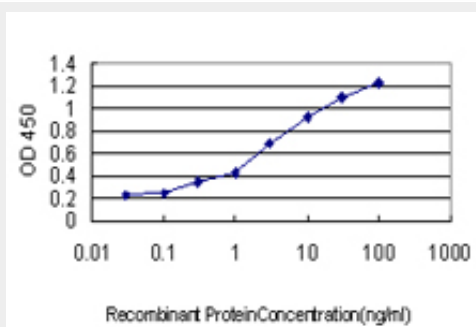


RGS2 monoclonal antibody (M01), clone 4C4 Western Blot analysis of RGS2 expression in MCF-7 (Cat # AT3628a)



Immunoperoxidase of monoclonal antibody to RGS2 on formalin-fixed paraffin-embedded human

tonsil. [antibody concentration 3 ug/ml]



Detection limit for recombinant GST tagged RGS2 is approximately 0.1ng/ml as a capture antibody.

RGS2 Antibody (monoclonal) (M01) - Background

Regulator of G protein signaling (RGS) family members are regulatory molecules that act as GTPase activating proteins (GAPs) for G alpha subunits of heterotrimeric G proteins. RGS proteins are able to deactivate G protein subunits of the Gi alpha, Go alpha and Gq alpha subtypes. They drive G proteins into their inactive GDP-bound forms. Regulator of G protein signaling 2 belongs to this family. The protein acts as a mediator of myeloid differentiation and may play a role in leukemogenesis.

RGS2 Antibody (monoclonal) (M01) - References

1. Semi-quantitative measurement of specific proteins in human cumulus cells using reverse phase protein array. Puard V, Tranchant T, Cadoret V, Gauthier C, Reiter E, Guerif F, Royere D. *Reprod Biol Endocrinol*. 2013 Oct 22;11(1):100.
2. Role of JAK2-STAT3 in TLR2-mediated tissue factor expression. Park DW, Lyu JH, Kim JS, Chin H, Bae YS, Baek SH. *J Cell Biochem*. 2012 Dec 13. doi: 10.1002/jcb.24472.
3. RGS2 is a negative regulator of STAT3-mediated Nox1 expression. Lee HK, Park DW, Bae JH, Kim HJ, Shin DG, Park JS, Lee JG, Lee SJ, Bae YS, Baek SH. *Cell Signal*. 2011 Nov 18.
4. Chromatin modifications induced by PML-RAR{alpha} repress critical targets in leukemogenesis as analyzed by ChIP-Chip. Hoemme C, Peerzada A, Behre G, Wang Y, McClelland M, Nieselt K, Zschunke M, Disselhoff C, Agrawal S, Isken F, Tidow N, Berdel WE, Serve H, Muller-Tidow C. *Blood*. 2008 Mar 1;111(5):2887-95. Epub 2007 Nov 16.