

RNF103 Antibody (monoclonal) (M01)**Mouse monoclonal antibody raised against a partial recombinant RNF103.****Catalog # AT3656a****Specification**

RNF103 Antibody (monoclonal) (M01) - Product Information

Application	WB
Primary Accession	O00237
Other Accession	NM_005667
Reactivity	Human
Host	mouse
Clonality	Monoclonal
Isotype	IgG2a Kappa
Calculated MW	79405

RNF103 Antibody (monoclonal) (M01) - Additional Information**Gene ID** 7844**Other Names**

E3 ubiquitin-protein ligase RNF103, 632-, KF-1, hKF-1, RING finger protein 103, Zinc finger protein 103 homolog, Zfp-103, RNF103, ZFP103

Target/Specificity

RNF103 (NP_005658, 501 a.a. ~ 599 a.a) partial recombinant protein with GST tag. MW of the GST tag alone is 26 KDa.

Dilution

WB~~1:500~1000

Format

Clear, colorless solution in phosphate buffered saline, pH 7.2 .

Storage

Store at -20°C or lower. Aliquot to avoid repeated freezing and thawing.

Precautions

RNF103 Antibody (monoclonal) (M01) is for research use only and not for use in diagnostic or therapeutic procedures.

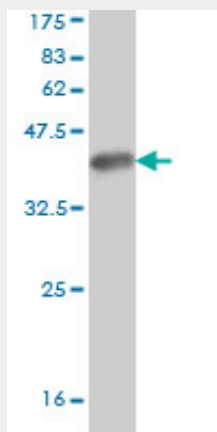
RNF103 Antibody (monoclonal) (M01) - Protocols

Provided below are standard protocols that you may find useful for product applications.

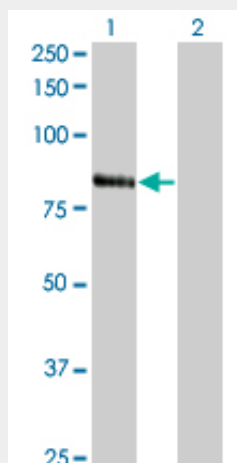
- [Western Blot](#)
- [Blocking Peptides](#)
- [Dot Blot](#)

- [Immunohistochemistry](#)
- [Immunofluorescence](#)
- [Immunoprecipitation](#)
- [Flow Cytometry](#)
- [Cell Culture](#)

RNF103 Antibody (monoclonal) (M01) - Images



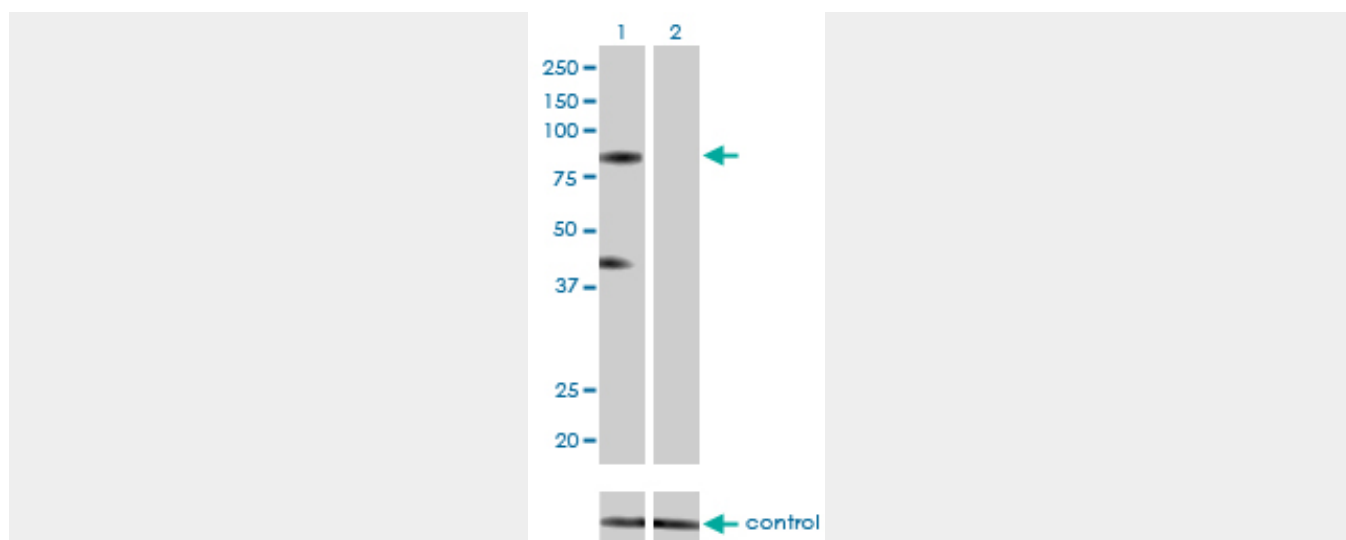
Antibody Reactive Against Recombinant Protein. Western Blot detection against Immunogen (36.63 KDa) .



Western Blot analysis of RNF103 expression in transfected 293T cell line by RNF103 monoclonal antibody (M01), clone 3E7.

Lane 1: RNF103 transfected lysate (79.405 KDa).

Lane 2: Non-transfected lysate.



Western blot analysis of RNF103 over-expressed 293 cell line, cotransfected with RNF103 Validated Chimera RNAi (Cat # AT3656a)

RNF103 Antibody (monoclonal) (M01) - Background

The protein encoded by this gene contains a RING-H2 finger, a motif known to be involved in protein-protein and protein-DNA interactions. This gene is highly expressed in normal cerebellum, but not in the cerebral cortex. The expression of the rat counterpart in the frontal cortex and hippocampus was shown to be induced by electroconvulsive treatment (ECT) as well as chronic antidepressant treatment, suggesting that this gene may be a molecular target for ECT and antidepressants.

RNF103 Antibody (monoclonal) (M01) - References

Ubiquitin ligase Kf-1 is involved in the endoplasmic reticulum-associated degradation pathway. Maruyama Y, et al. Biochem Biophys Res Commun, 2008 Oct 3. PMID 18675248. Analysis of electrostatic contributions to the selectivity of interactions between RING-finger domains and ubiquitin-conjugating enzymes. Scheper J, et al. Proteins, 2009 Jan. PMID 18615712. Generation and annotation of the DNA sequences of human chromosomes 2 and 4. Hillier LW, et al. Nature, 2005 Apr 7. PMID 15815621. The status, quality, and expansion of the NIH full-length cDNA project: the Mammalian Gene Collection (MGC). Gerhard DS, et al. Genome Res, 2004 Oct. PMID 15489334. Complete sequencing and characterization of 21,243 full-length human cDNAs. Ota T, et al. Nat Genet, 2004 Jan. PMID 14702039.