

**RPS27A Antibody (monoclonal) (M01)****Mouse monoclonal antibody raised against a full length recombinant RPS27A.****Catalog # AT3716a****Specification**

---

**RPS27A Antibody (monoclonal) (M01) - Product Information**

Application	WB
Primary Accession	<a href="#">P62979</a>
Other Accession	<a href="#">BC001392</a>
Reactivity	Human
Host	mouse
Clonality	Monoclonal
Isotype	IgG1 Lambda
Calculated MW	17965

**RPS27A Antibody (monoclonal) (M01) - Additional Information****Gene ID** 6233**Other Names**

Ubiquitin-40S ribosomal protein S27a, Ubiquitin carboxyl extension protein 80, Ubiquitin, 40S ribosomal protein S27a, RPS27A, UBA80, UBCEP1

**Target/Specificity**

RPS27A (AAH01392, 1 a.a. ~ 156 a.a) full-length recombinant protein with GST tag. MW of the GST tag alone is 26 KDa.

**Dilution**

WB~~1:500~1000

**Format**

Clear, colorless solution in phosphate buffered saline, pH 7.2 .

**Storage**

Store at -20°C or lower. Aliquot to avoid repeated freezing and thawing.

**Precautions**

RPS27A Antibody (monoclonal) (M01) is for research use only and not for use in diagnostic or therapeutic procedures.

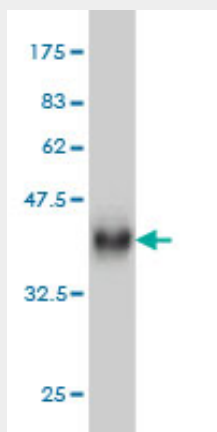
**RPS27A Antibody (monoclonal) (M01) - Protocols**

Provided below are standard protocols that you may find useful for product applications.

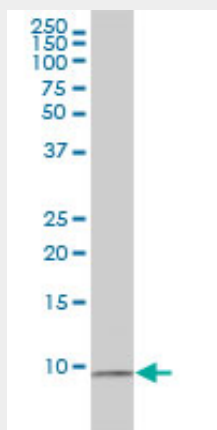
- [Western Blot](#)
- [Blocking Peptides](#)
- [Dot Blot](#)

- [Immunohistochemistry](#)
- [Immunofluorescence](#)
- [Immunoprecipitation](#)
- [Flow Cytometry](#)
- [Cell Culture](#)

#### RPS27A Antibody (monoclonal) (M01) - Images



Antibody Reactive Against Recombinant Protein. Western Blot detection against Immunogen (42.9 kDa) .



RPS27A monoclonal antibody (M01), clone 3E2-E6 Western Blot analysis of RPS27A expression in HL-60 (Cat # AT3716a)

#### RPS27A Antibody (monoclonal) (M01) - Background

Ubiquitin, a highly conserved protein that has a major role in targeting cellular proteins for degradation by the 26S proteasome, is synthesized as a precursor protein consisting of either polyubiquitin chains or a single ubiquitin fused to an unrelated protein. This gene encodes a fusion protein consisting of ubiquitin at the N terminus and ribosomal protein S27a at the C terminus. When expressed in yeast, the protein is post-translationally processed, generating free ubiquitin monomer and ribosomal protein S27a. Ribosomal protein S27a is a component of the 40S subunit of the ribosome and belongs to the S27AE family of ribosomal proteins. It contains C4-type zinc finger domains and is located in the cytoplasm. Pseudogenes derived from this gene are present in the genome. As with ribosomal protein S27a, ribosomal protein L40 is also synthesized as a fusion protein with ubiquitin; similarly, ribosomal protein S30 is synthesized as a fusion protein with the ubiquitin-like protein fubi. Multiple alternatively spliced transcript variants that encode the same proteins have been identified.

**RPS27A Antibody (monoclonal) (M01) - References**

1. Altered dynamics of ubiquitin hybrid proteins during tumor cell apoptosis. Han XJ, Lee MJ, Yu GR, Lee ZW, Bae JY, Bae YC, Kang SH, Kim DG. *Cell Death Dis.* 2012 Jan 19;3:e255. doi: 10.1038/cddis.2011.142.

2. The HBx protein of hepatitis B virus regulates the expression, intracellular distribution and functions of Ribosomal Protein S27a. Fatima G, Mathan G, Kumar V. *J Gen Virol.* 2011 Dec 7.

3. Chemoprevention with Aqueous Extract of *Butea monosperma* flowers results in normalization of nuclear morphometry and inhibition of a proliferation marker in liver tumors. Mathan G, Fatima G, Saxena AK, Chandan BK, Jaggi BS, Gupta BD, Qazi GN, Balasundaram C, Anand Rajan KD, Kumar VL, Kumar V. *Phytother Res.* 2010 Jul 28. [Epub ahead of print]